



2007 - 2015

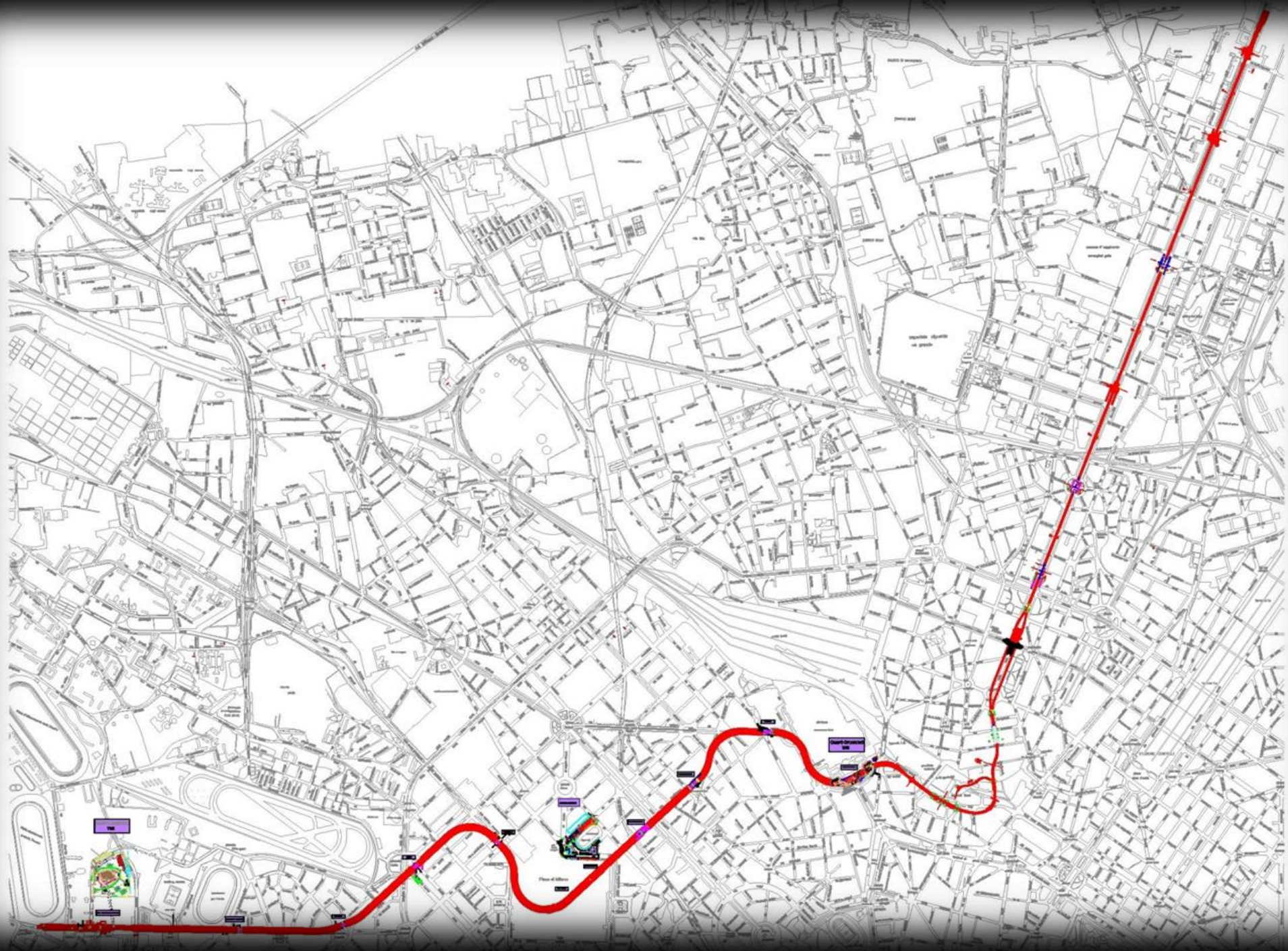


30 APRILE 2015

31 OTTOBRE 2015

**METRO 5**

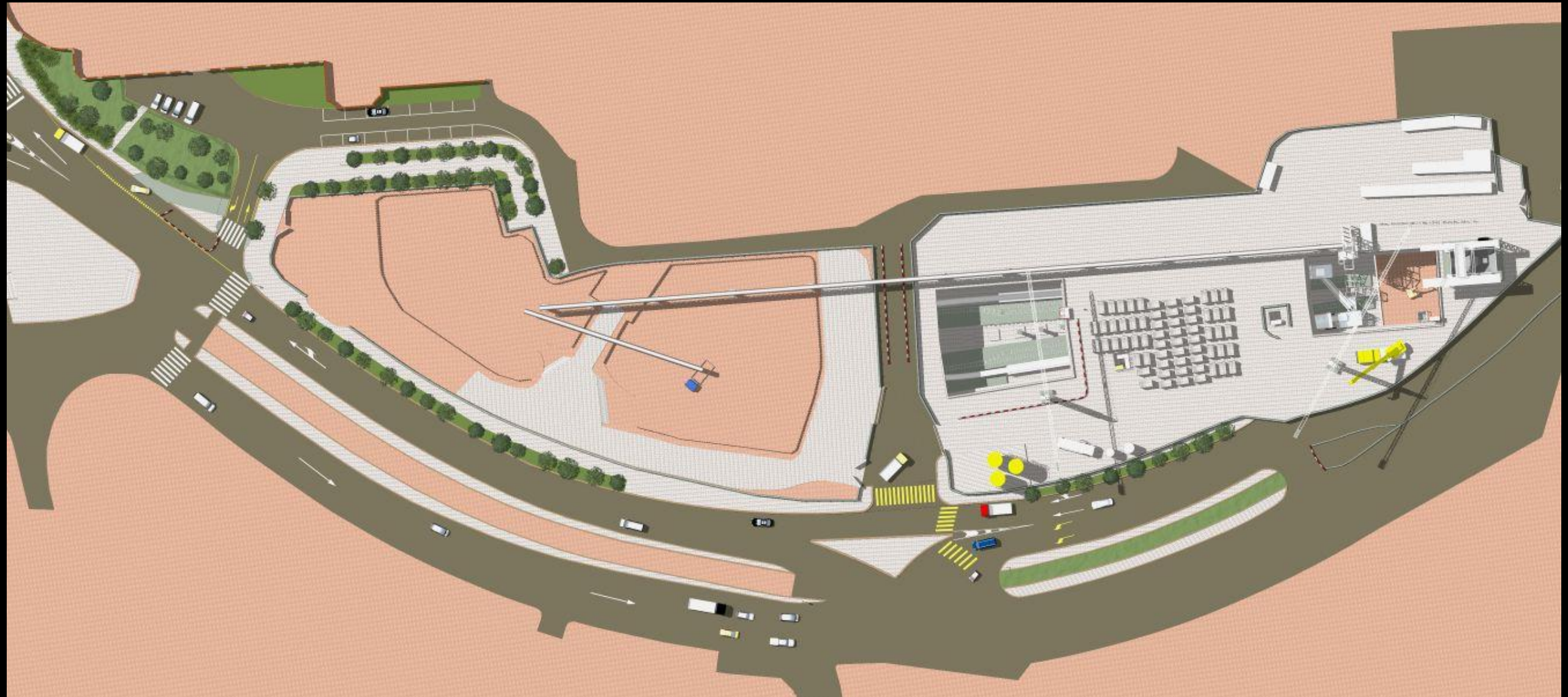






STAZIONE SAN SIRO

STAZIONE GARIBALDI

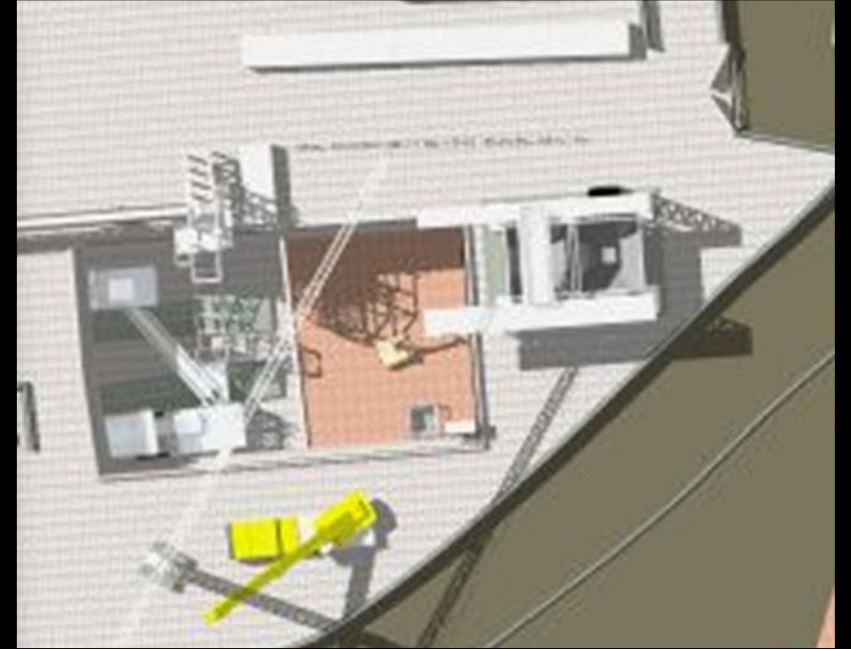
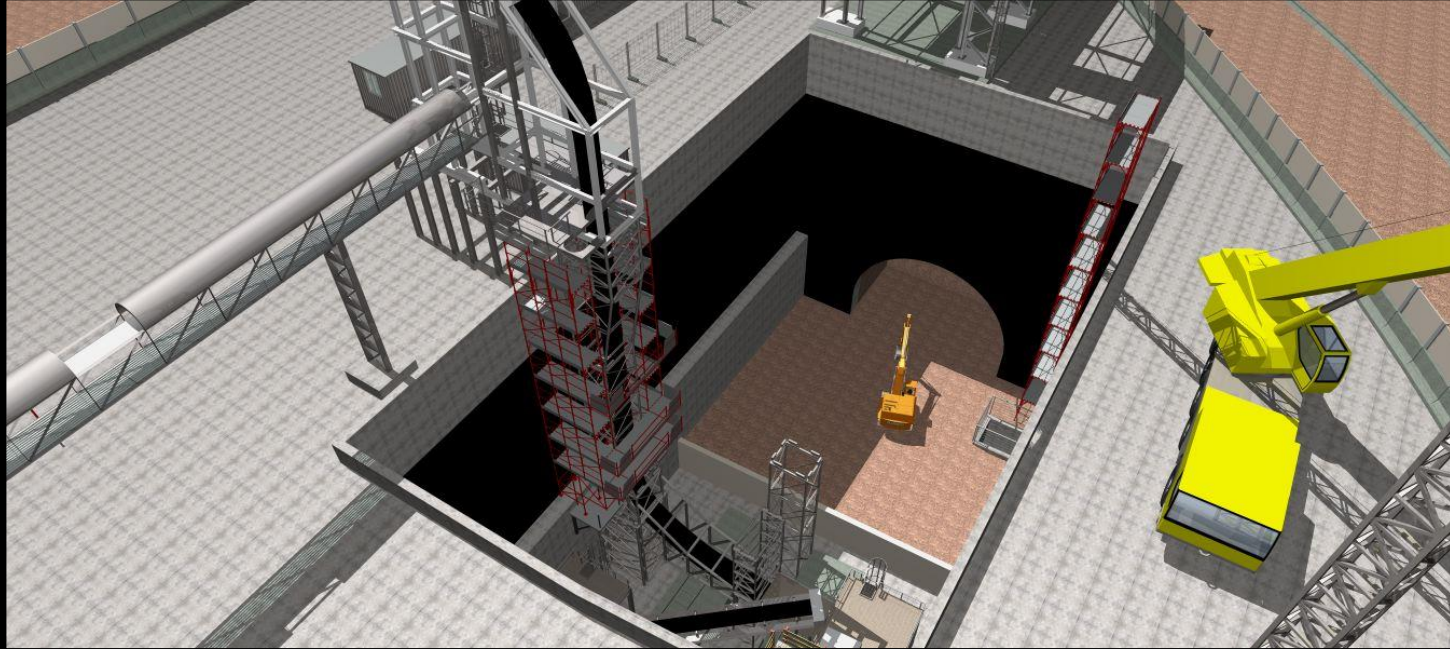






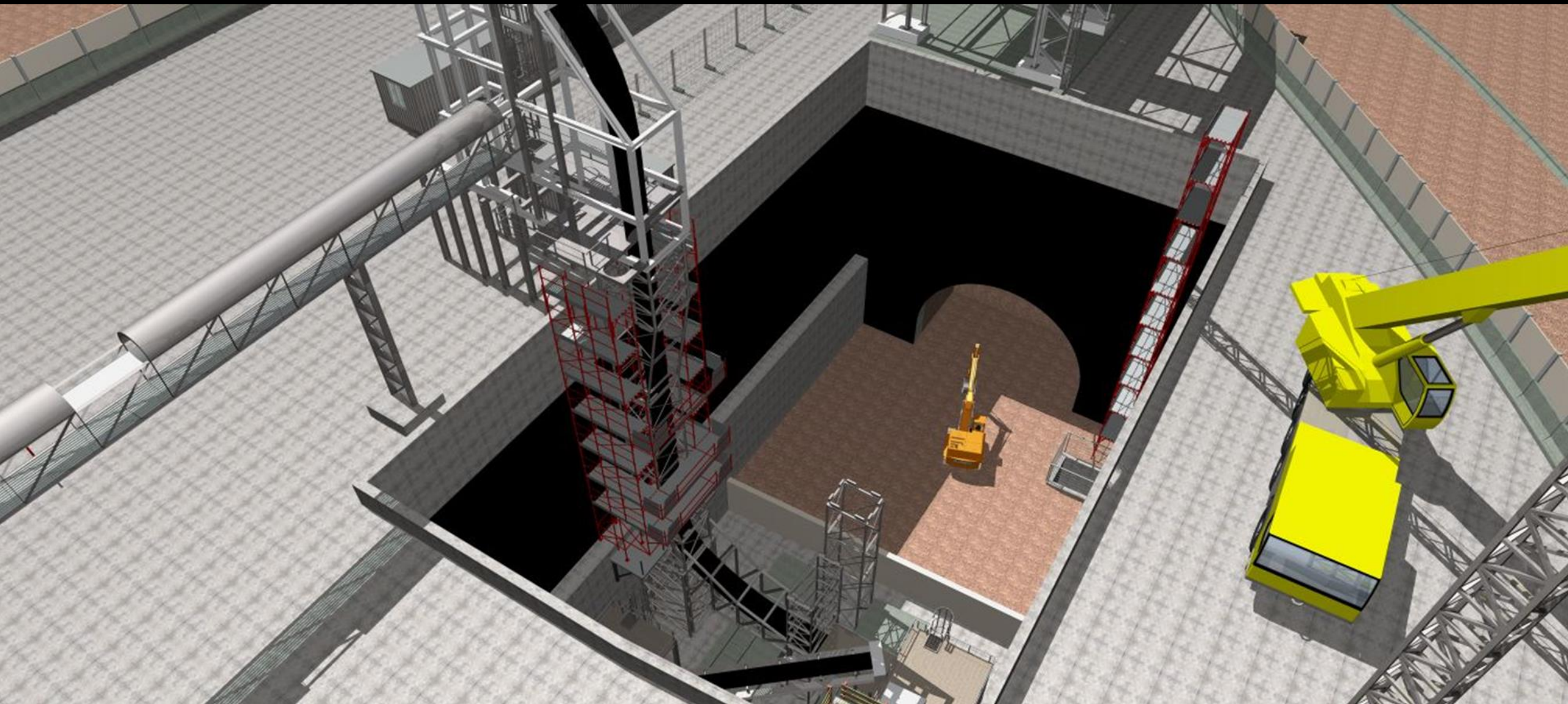


# MONUMENTALE POZZO SANT ANTONIO





IN QUEST'AREA SONO PRESENTI 4 AREE DI CANTIERE DISTINTE TRA LORO E TRA LORO INTERFERENTI



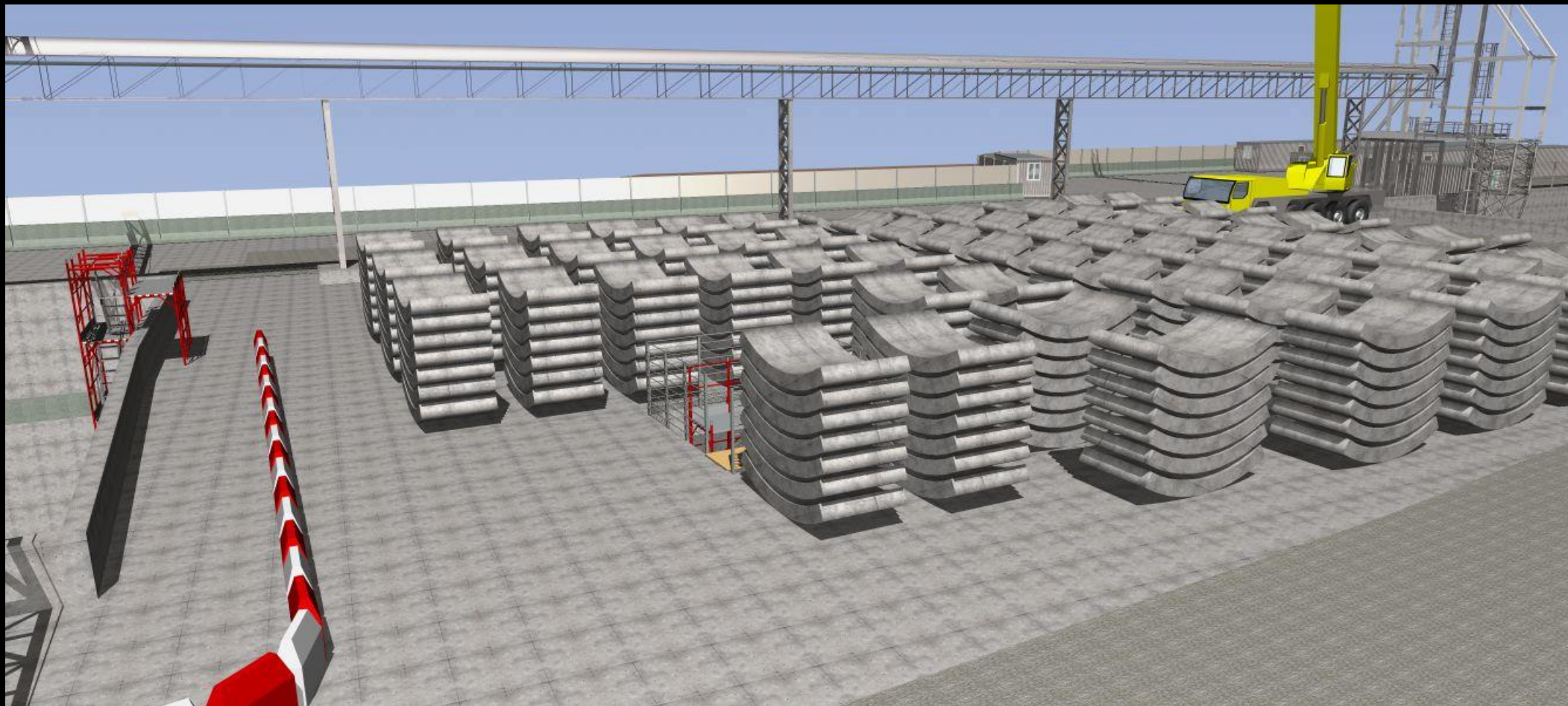


# PIAZZALE VIABILITA' INTERFERENZE TRA ACCESSI DEPOSITO MATERIALI E ATTIVITA' – NASTRO TRASPORTATORE

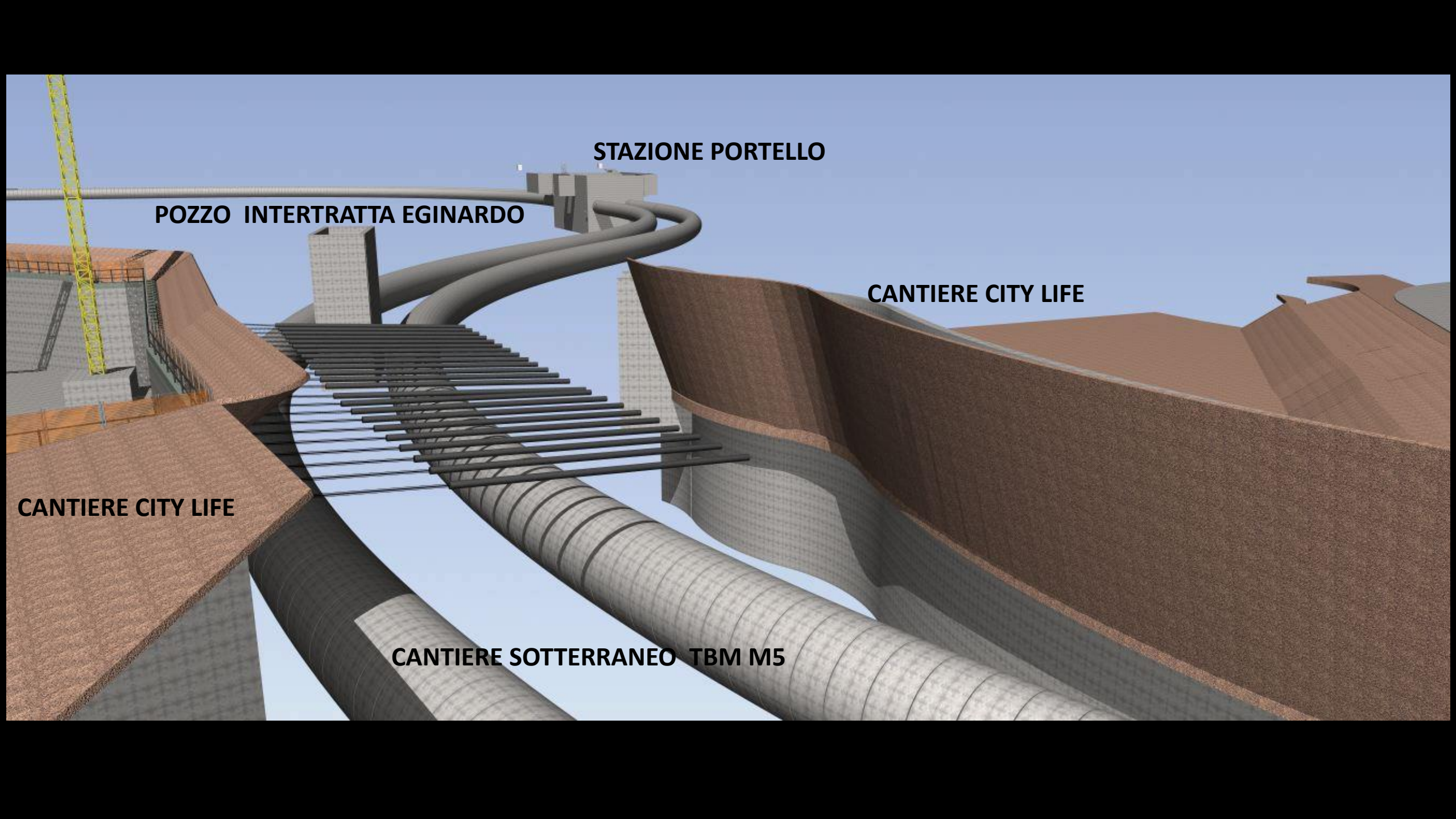




## ACCESSO ALLA STAZIONE – DEPOSITO MATERIALE A PROTEZIONE DELLA VIABILITA'







**STAZIONE PORTELLO**

**POZZO INTERTRATTA EGINARDO**

**CANTIERE CITY LIFE**

**CANTIERE CITY LIFE**

**CANTIERE SOTTERRANEO TBM M5**

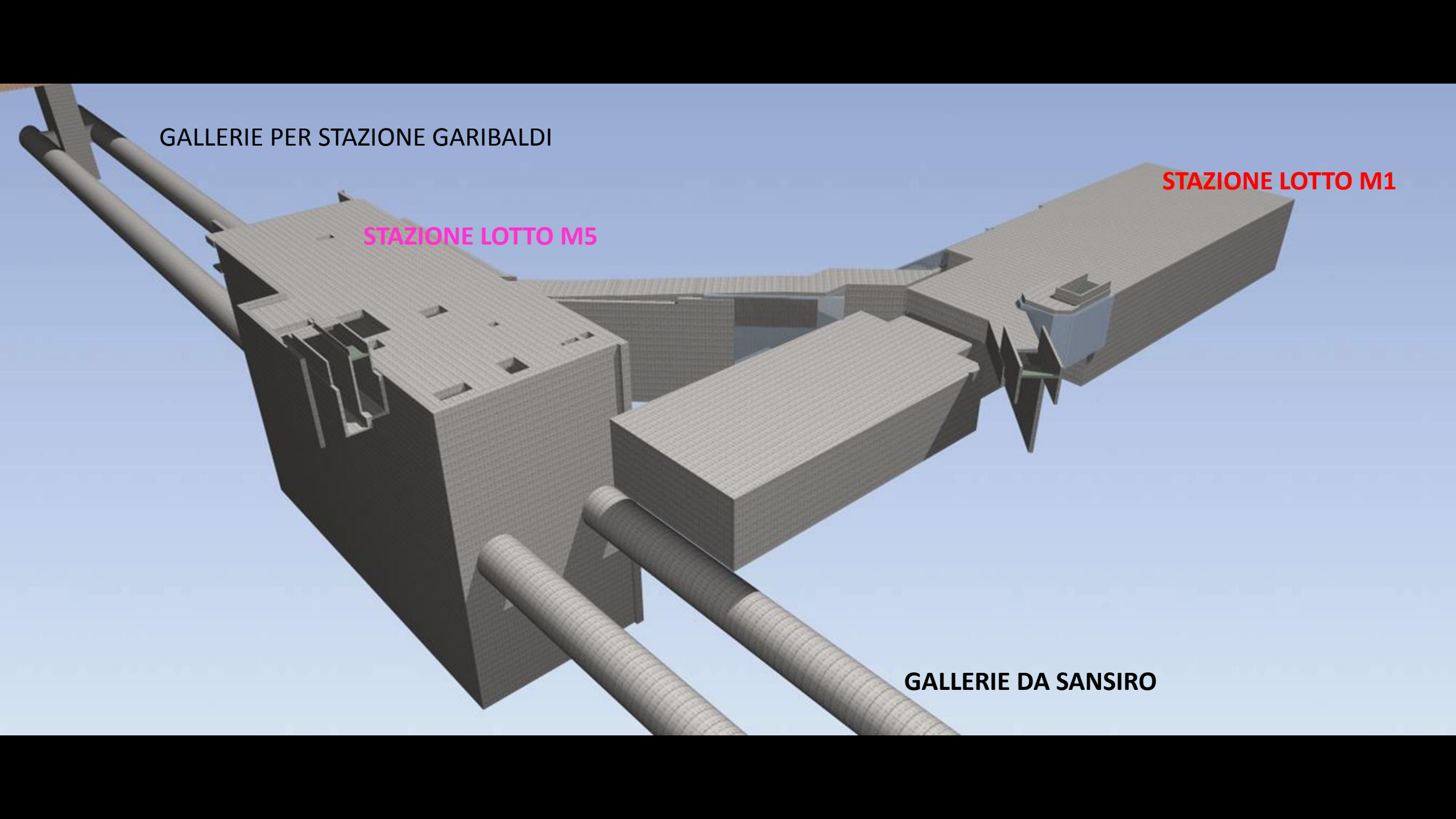


GALLERIE PER STAZIONE GARIBALDI

STAZIONE LOTTO M5

STAZIONE LOTTO M1

GALLERIE DA SANSIRO





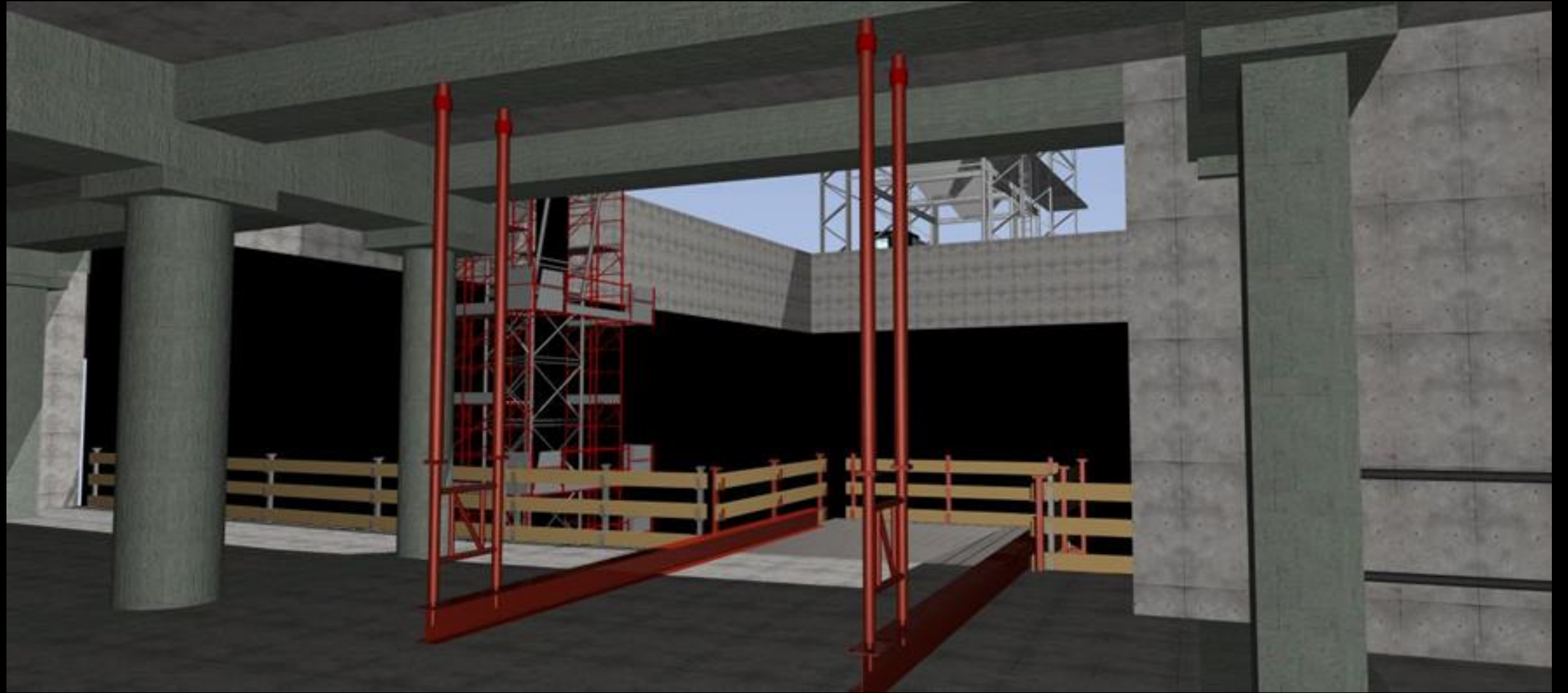
# PIANO DI CARICO – FINITURE E IMPIANTI



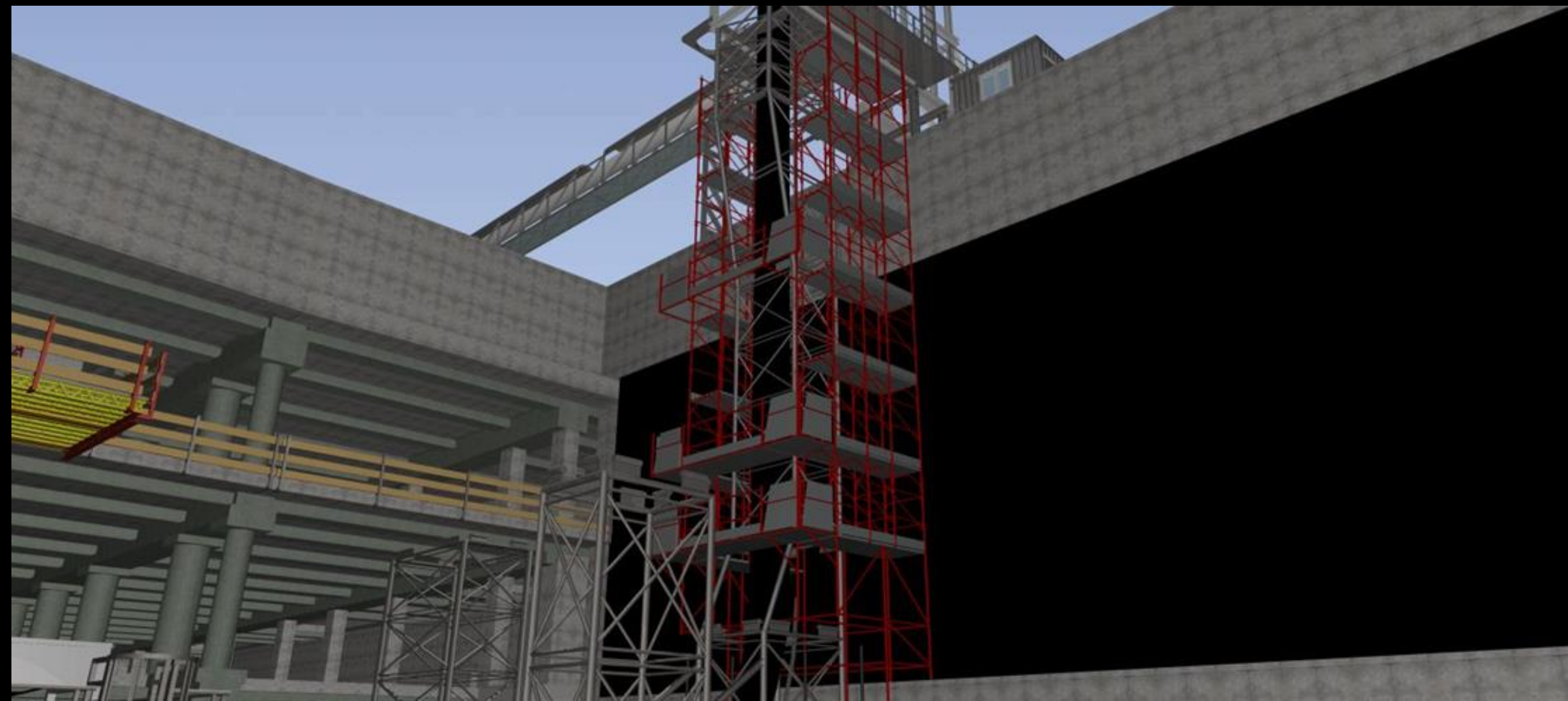




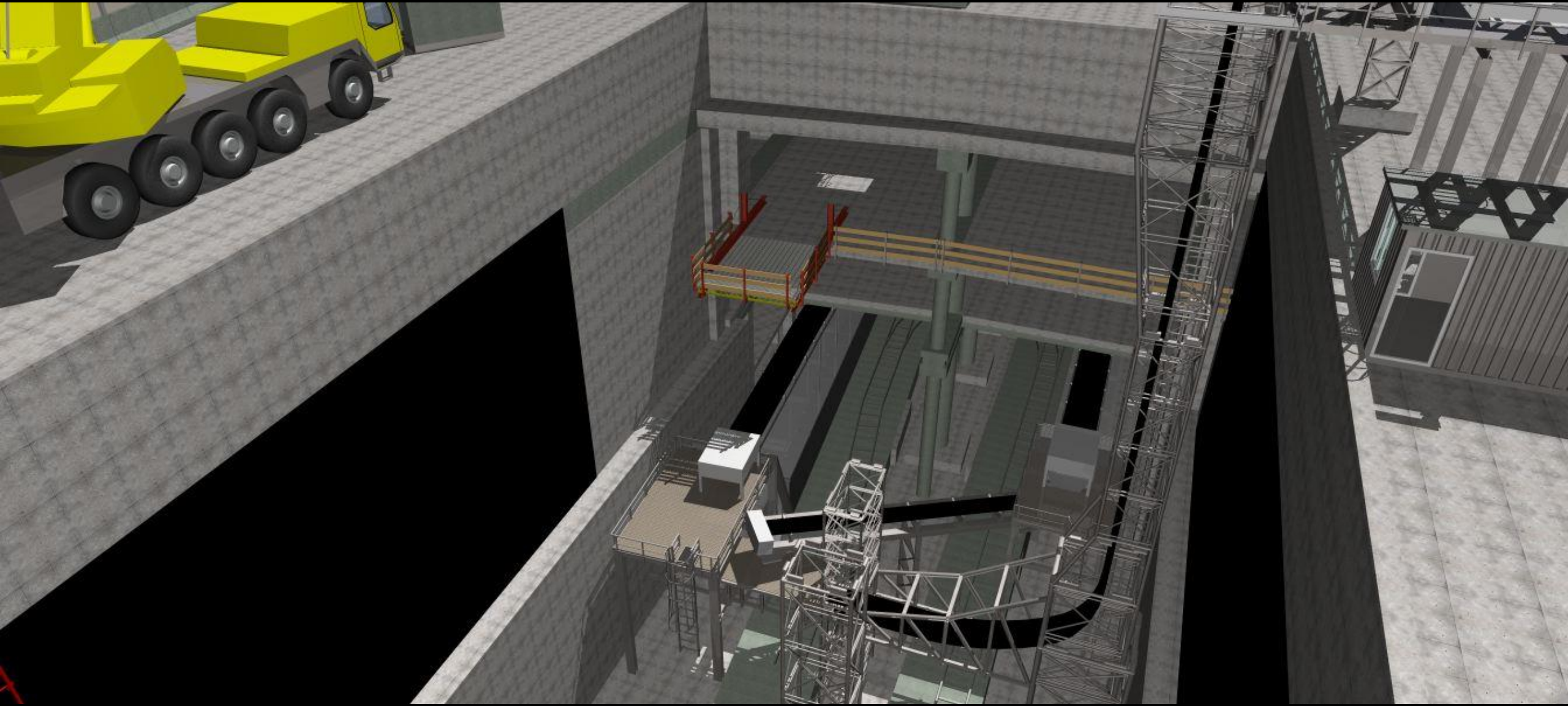




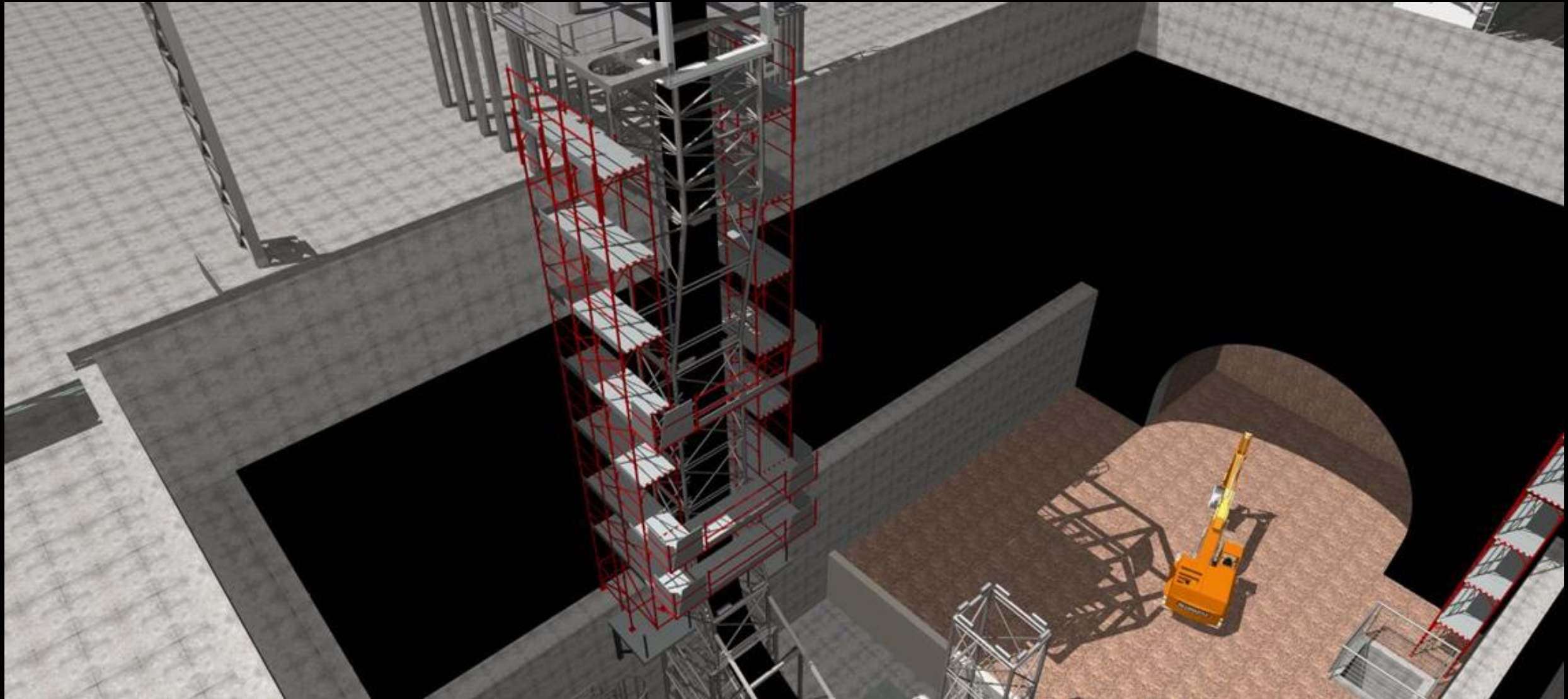




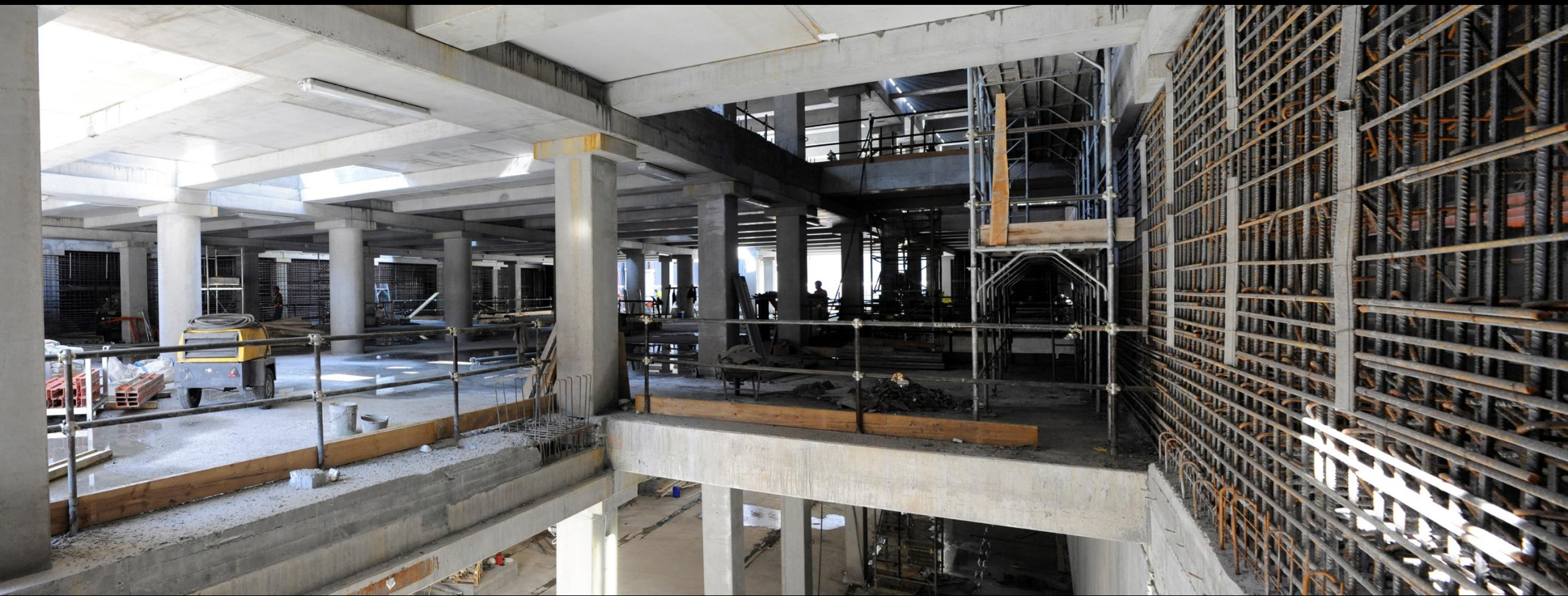
















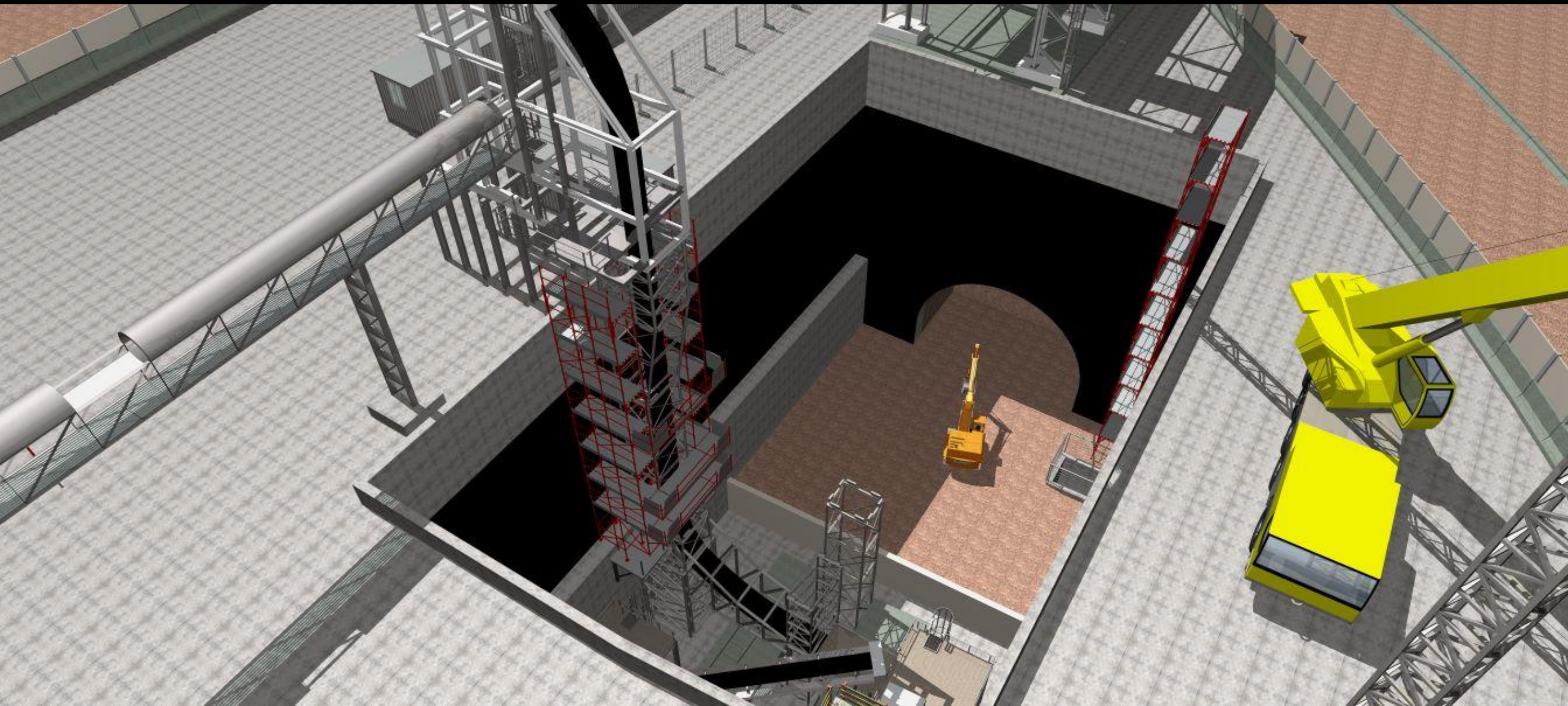












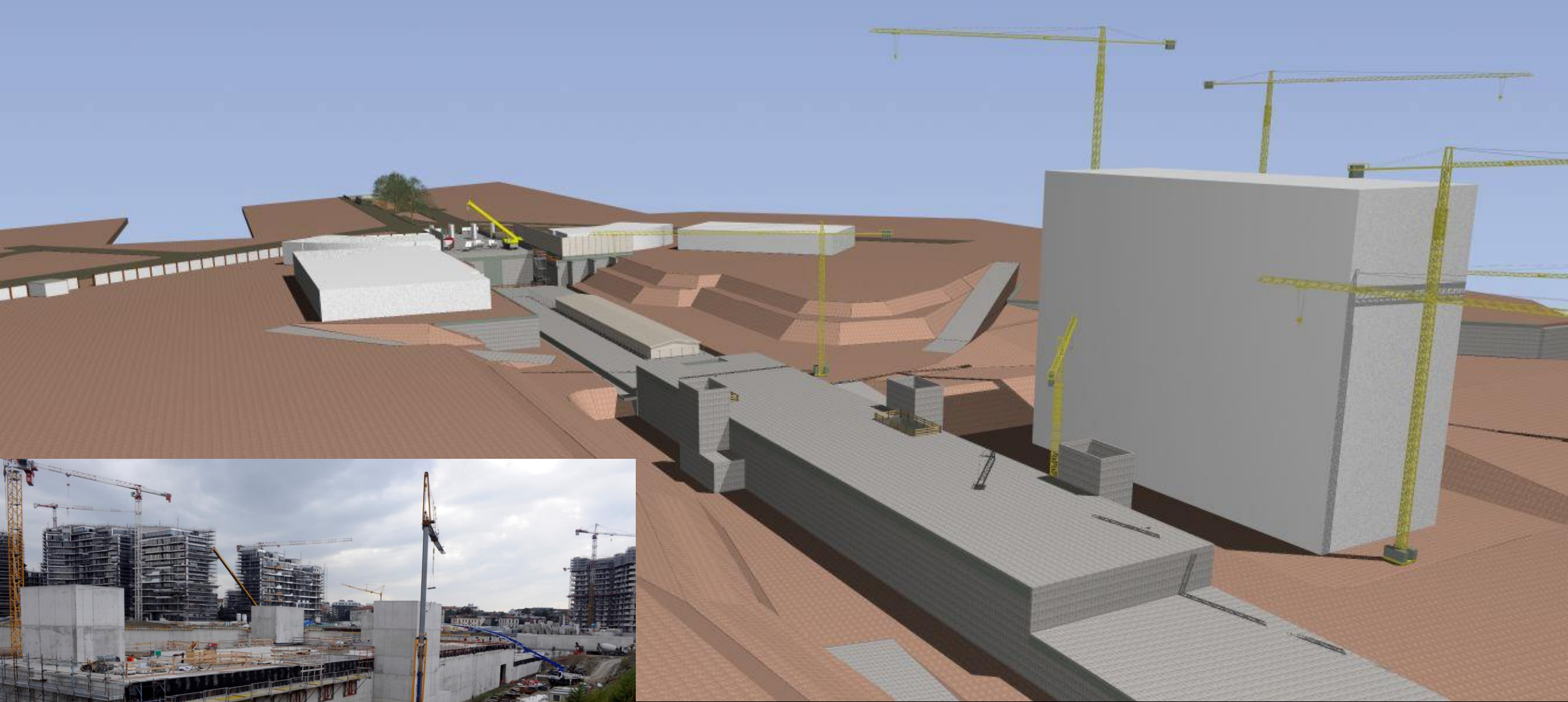






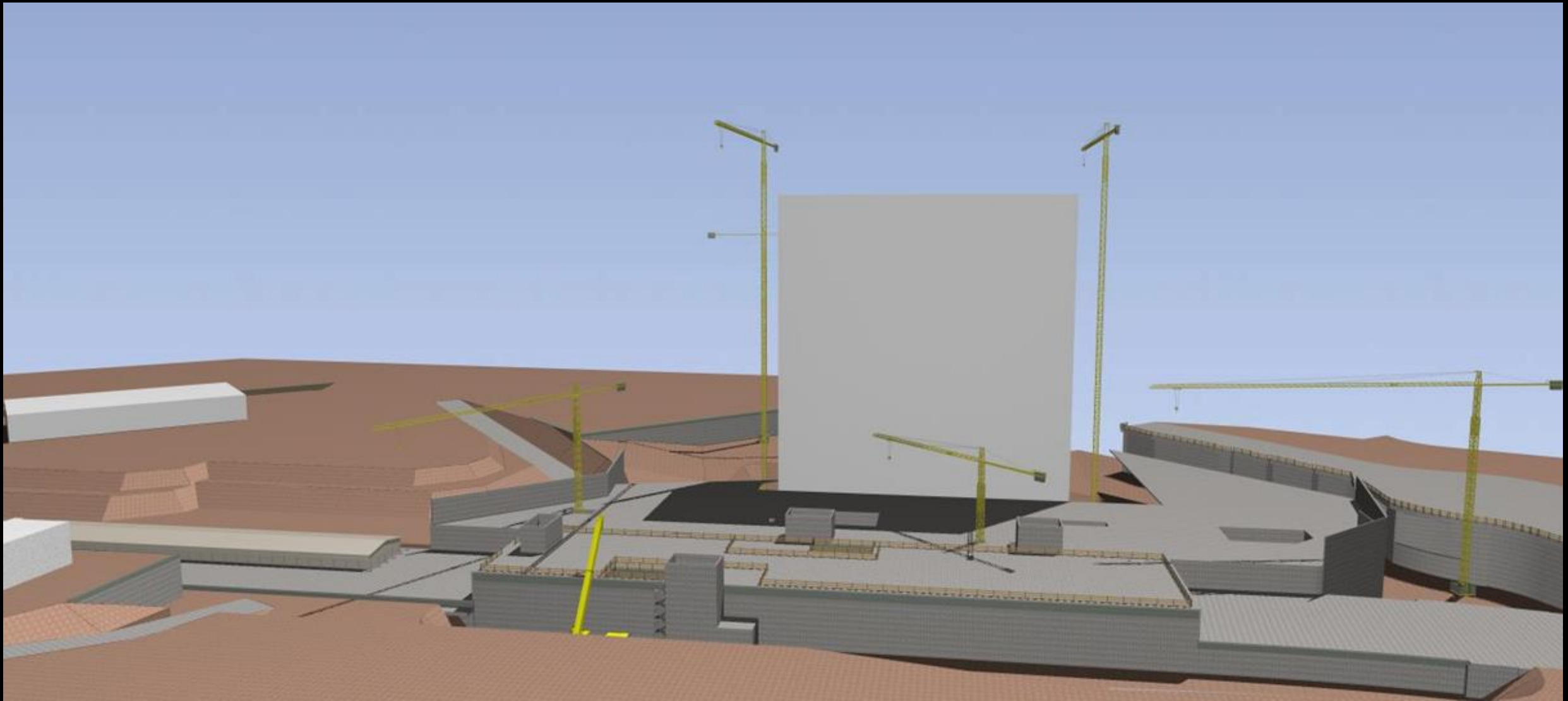






INTERFERENZE M5- CITY LIFE









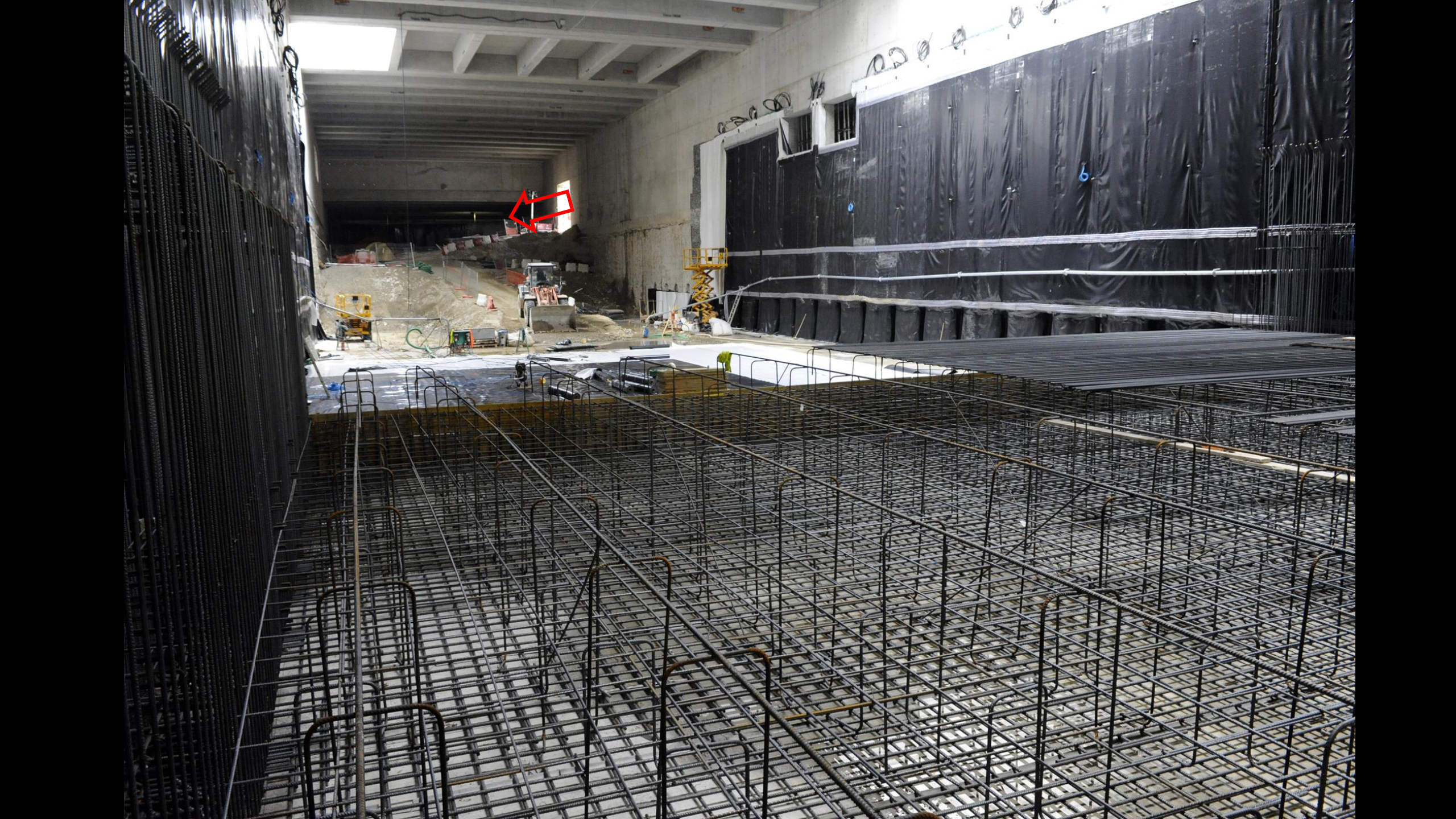




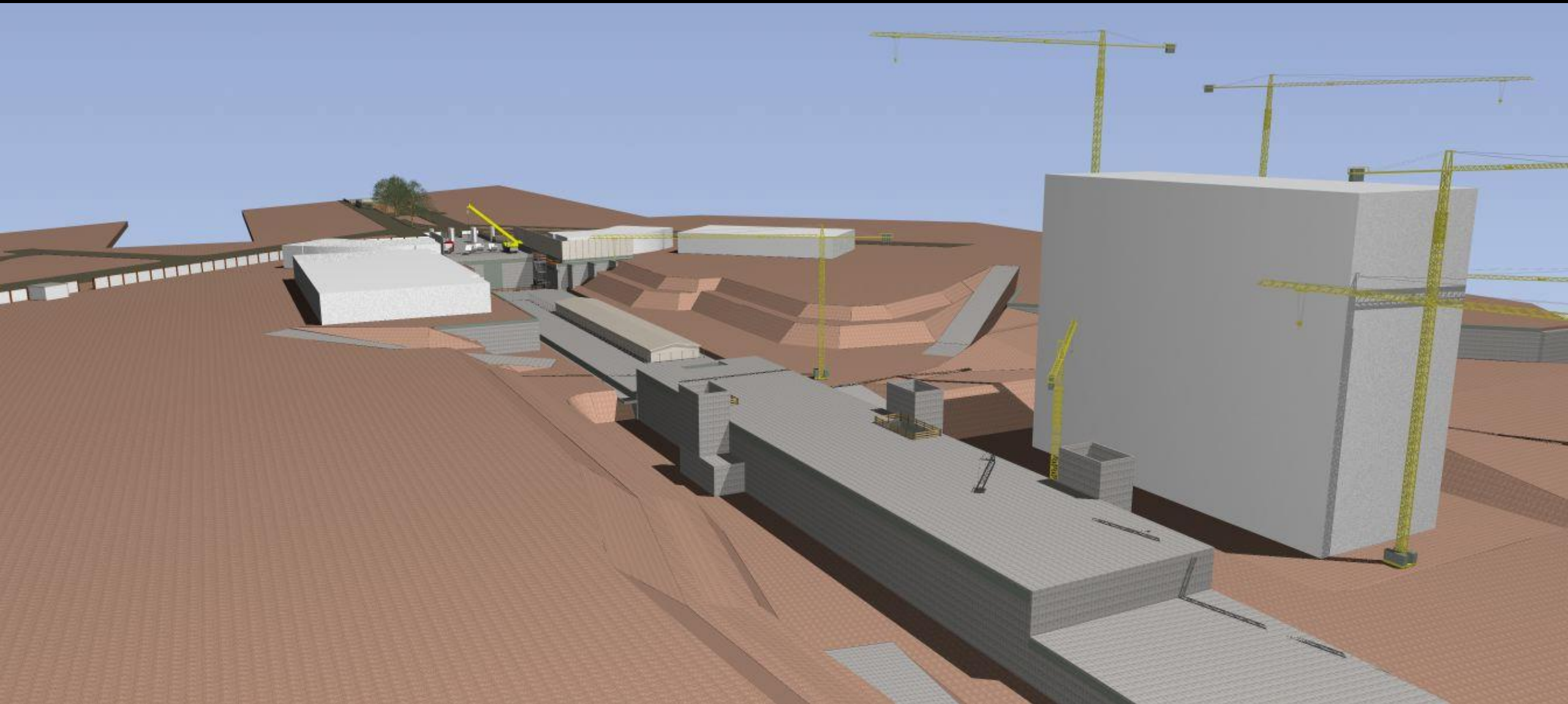




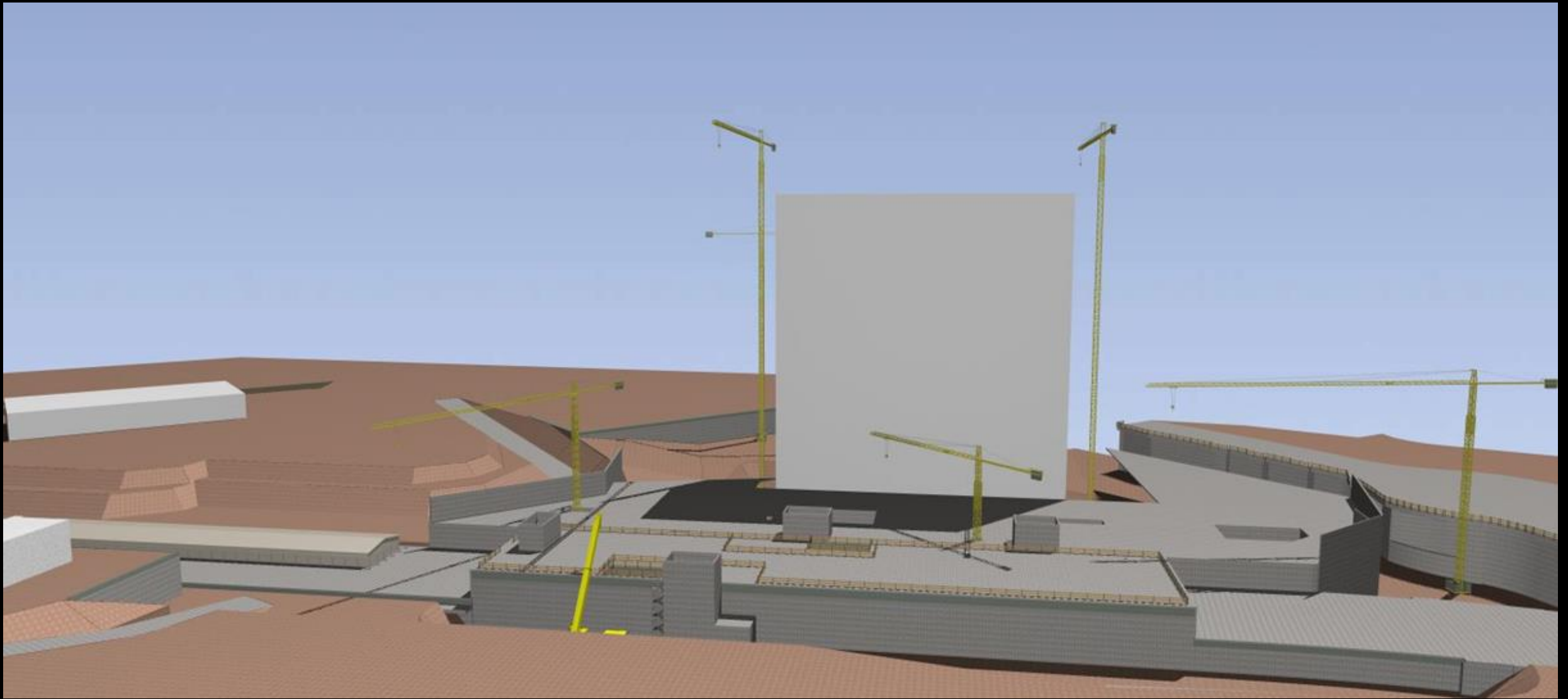








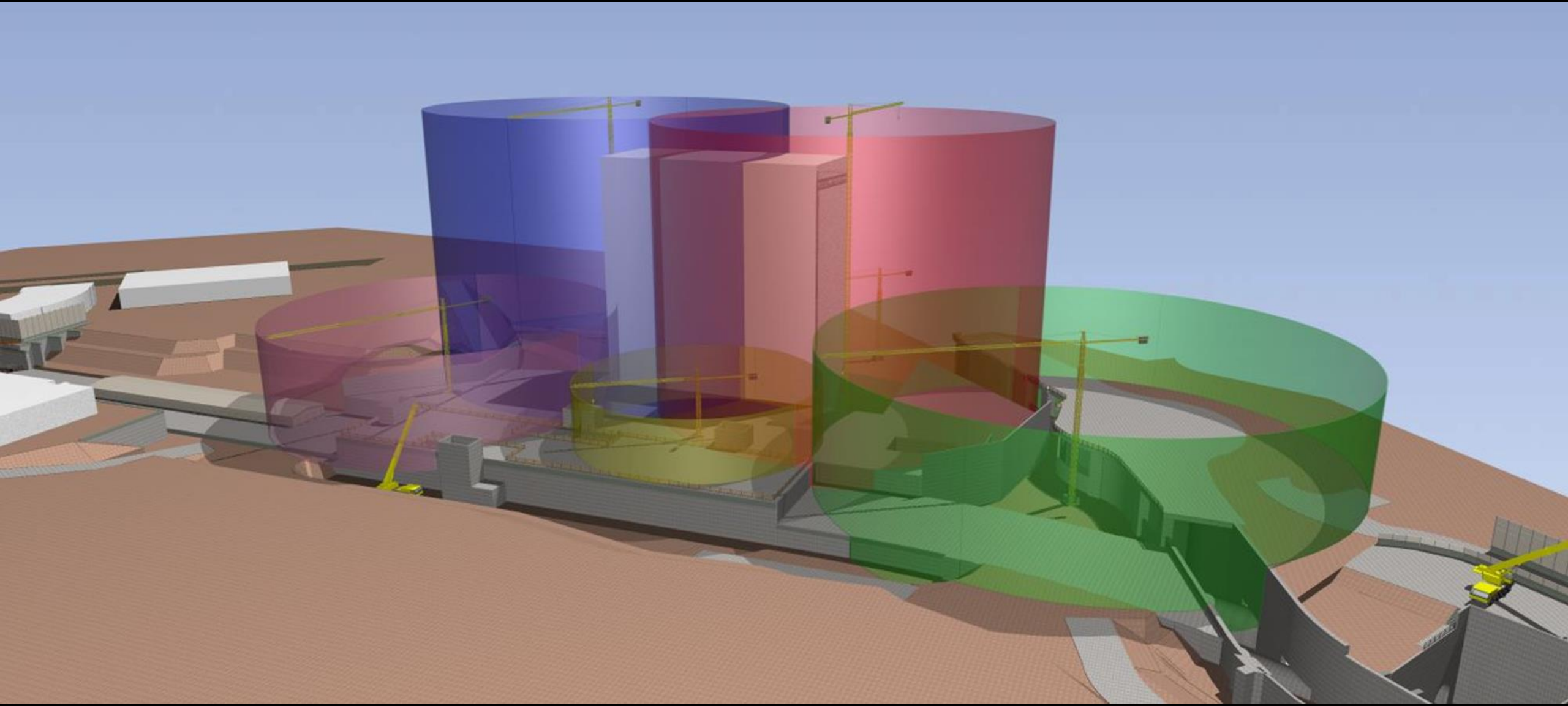








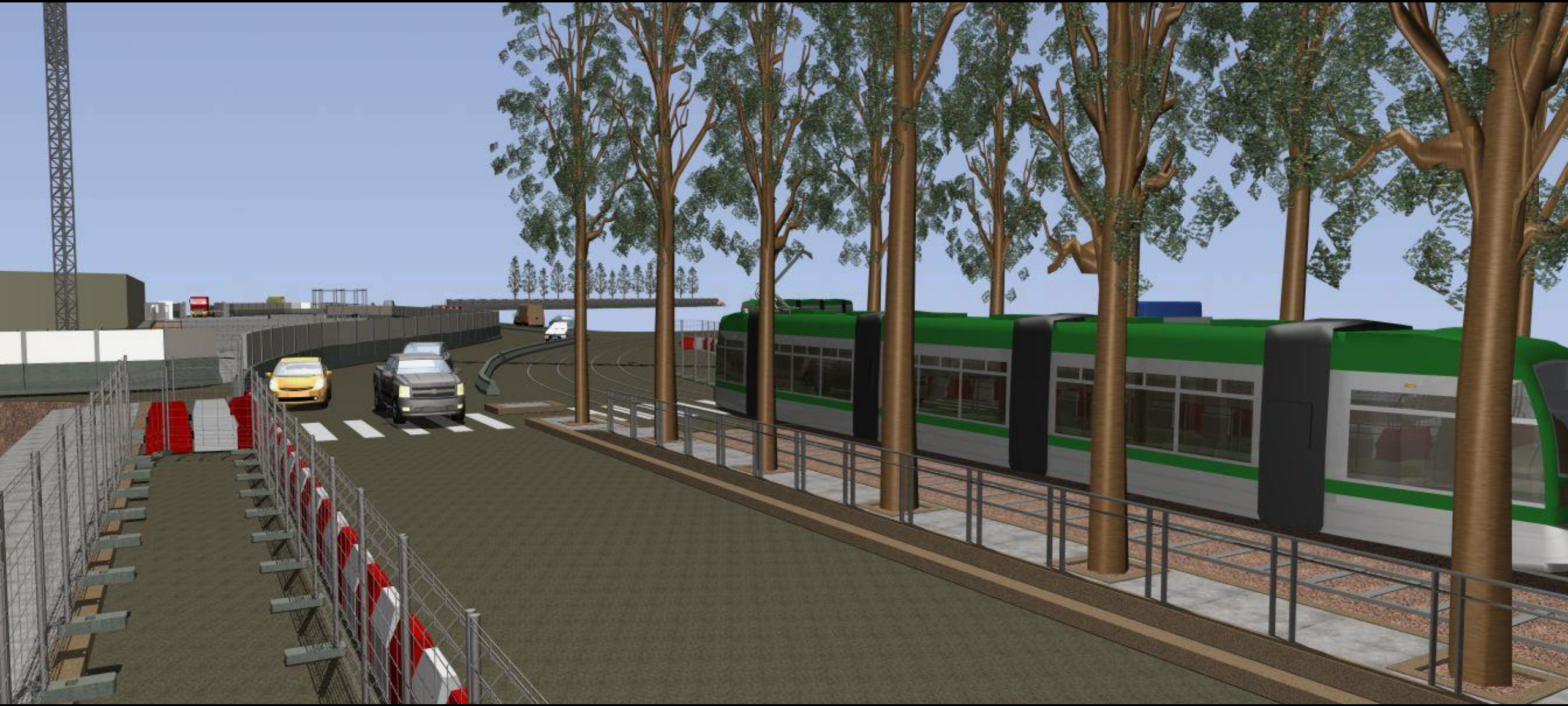




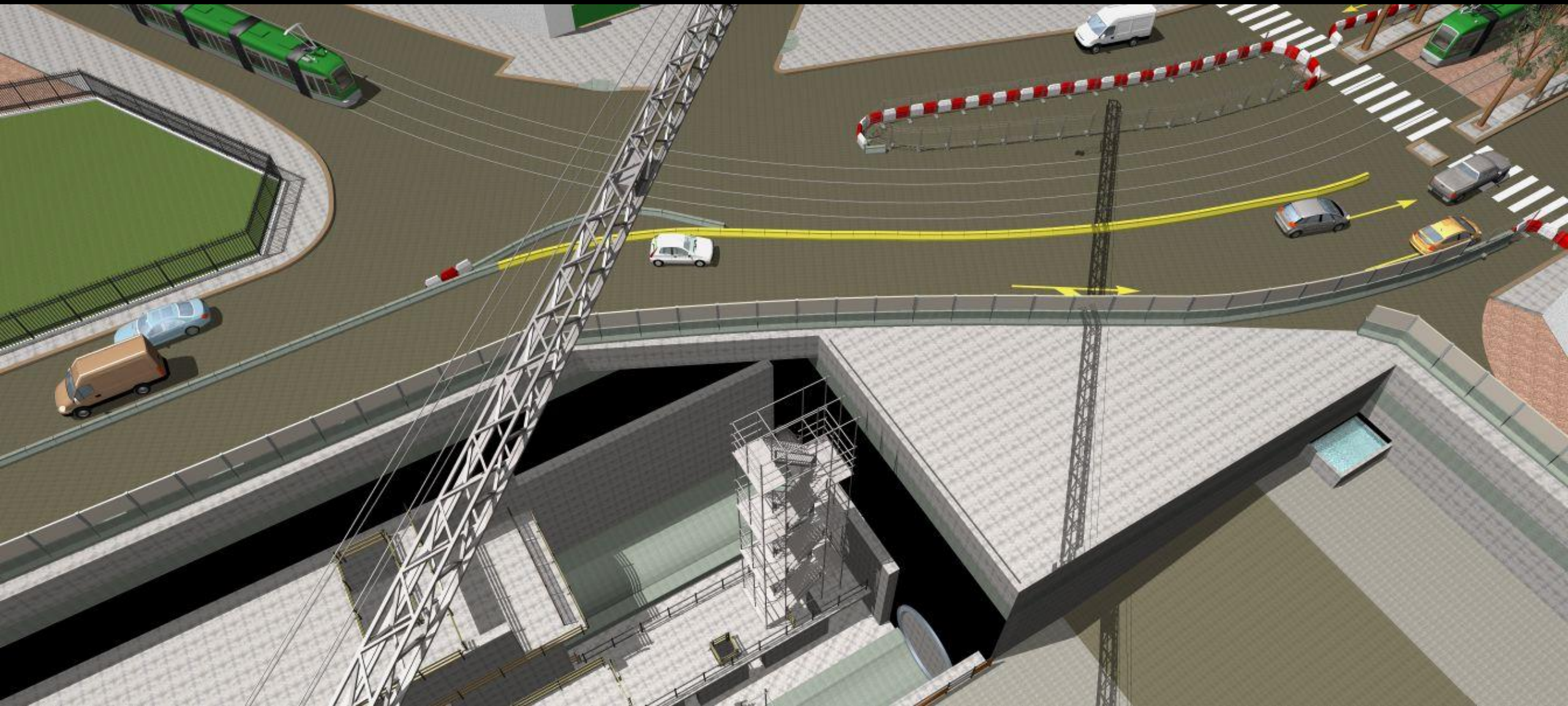
















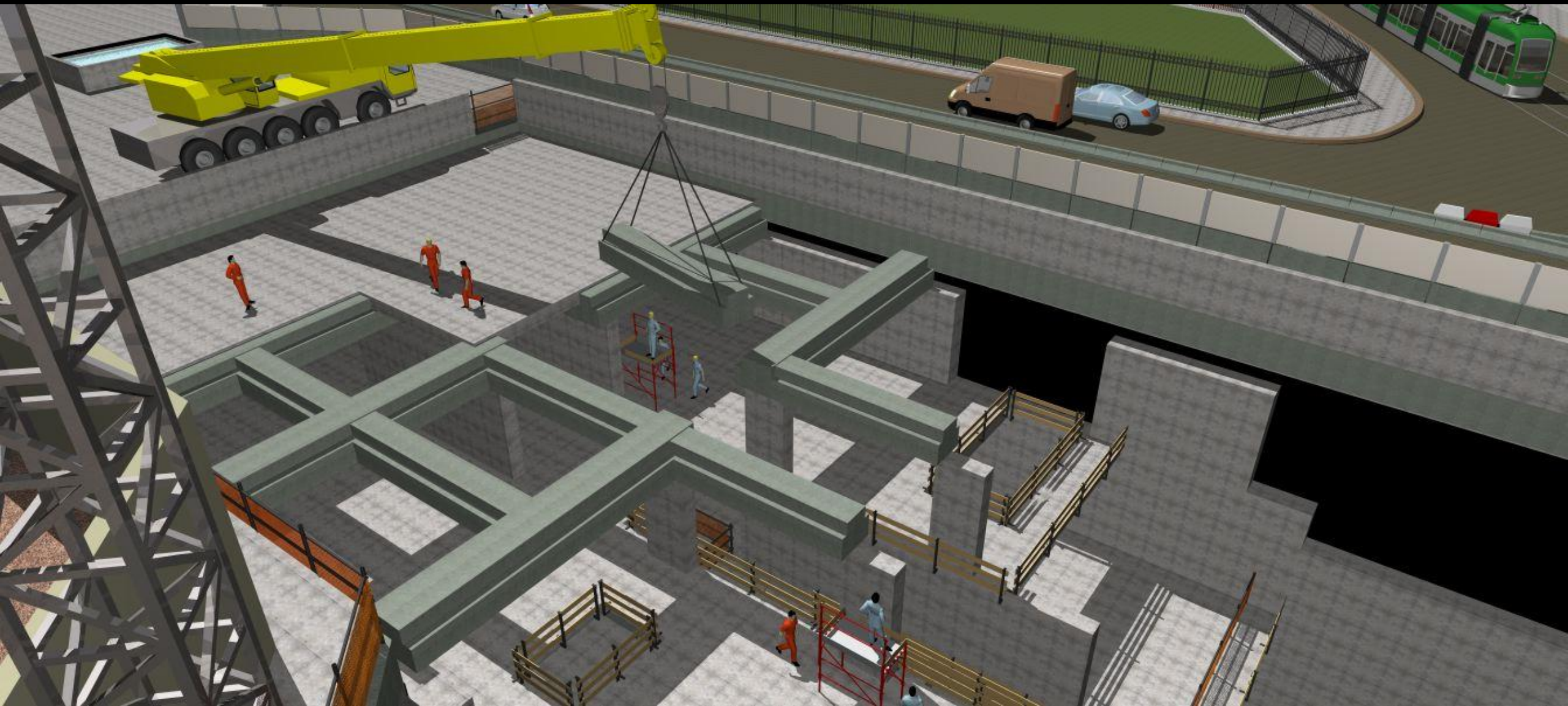




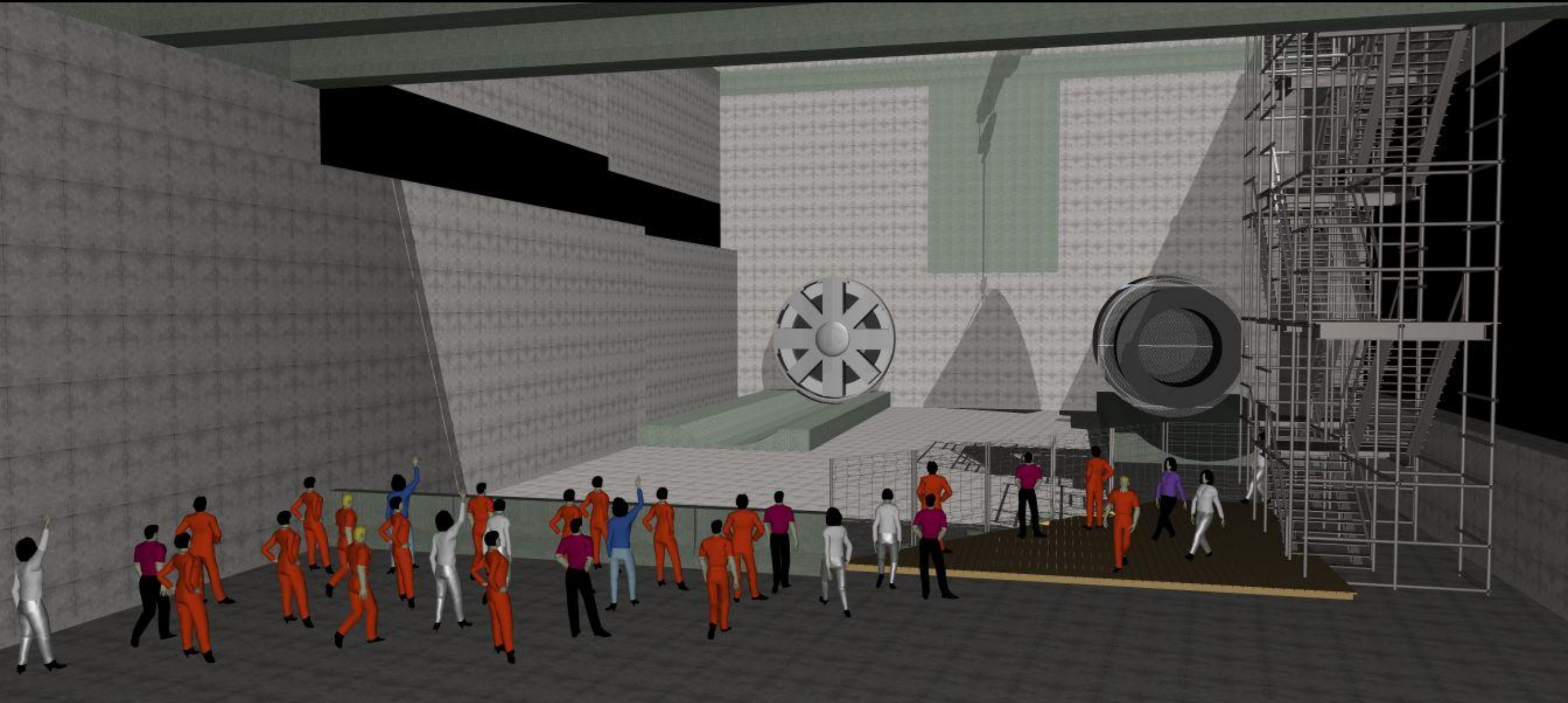




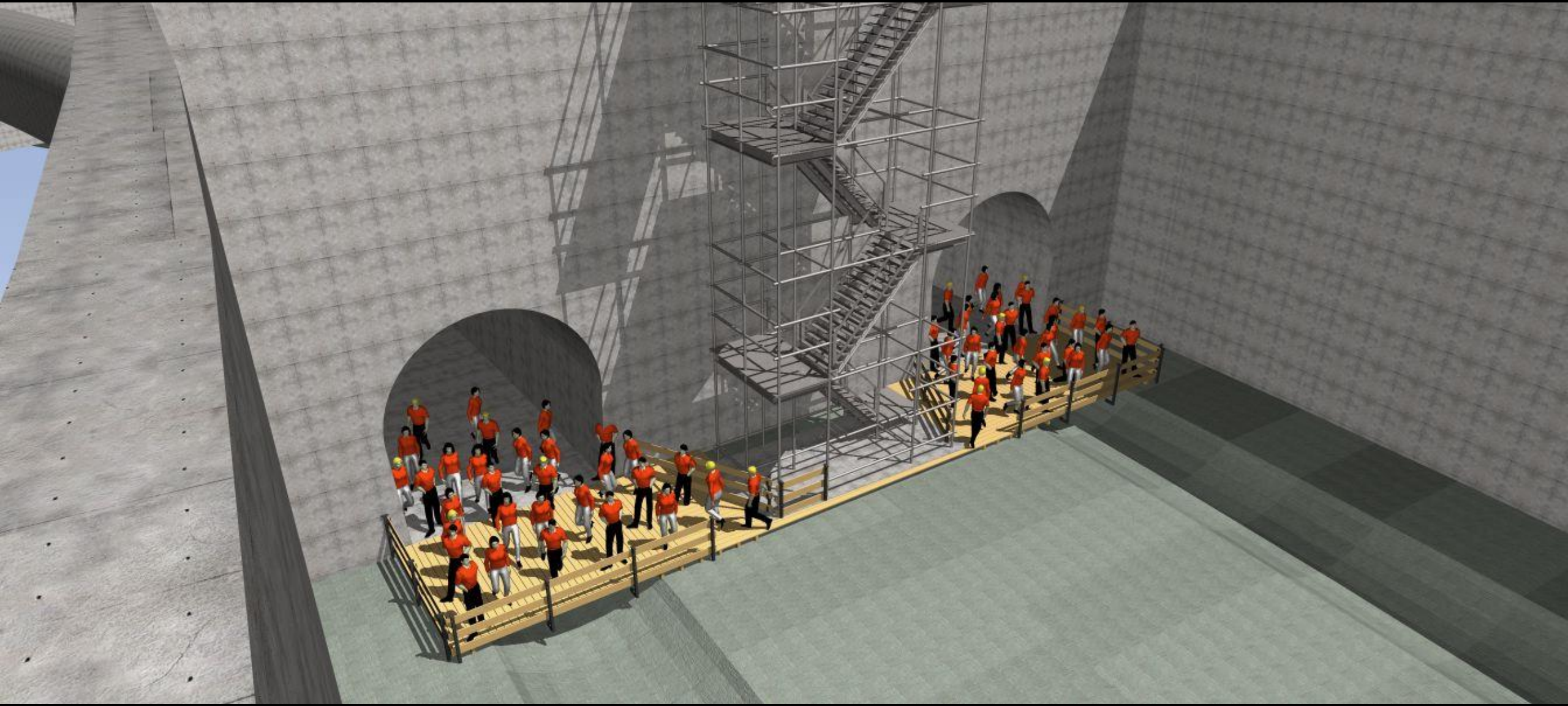








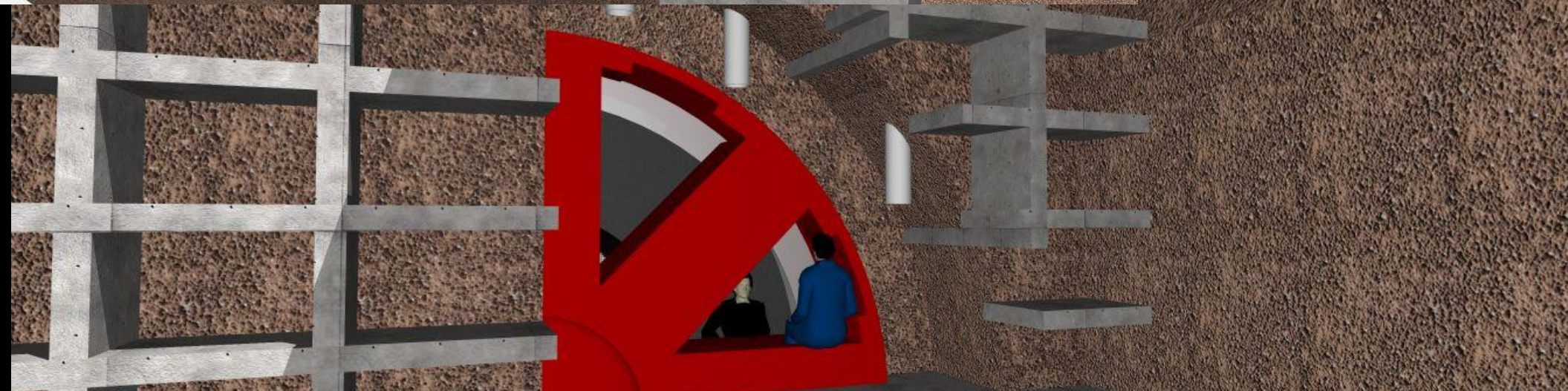
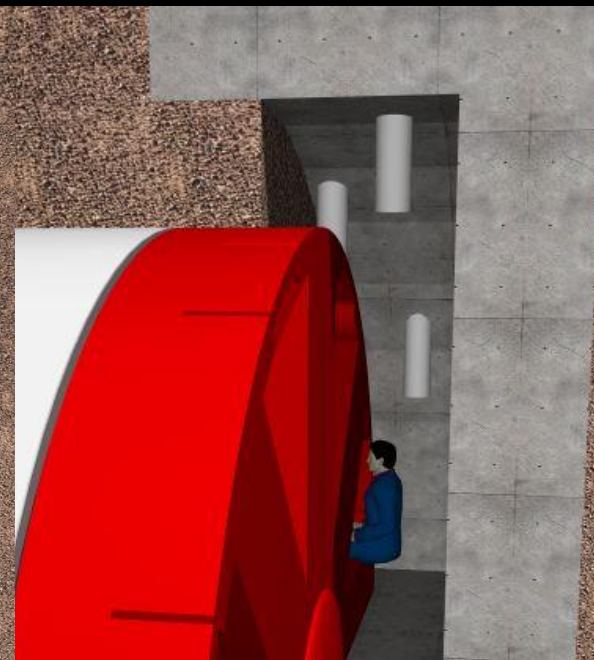
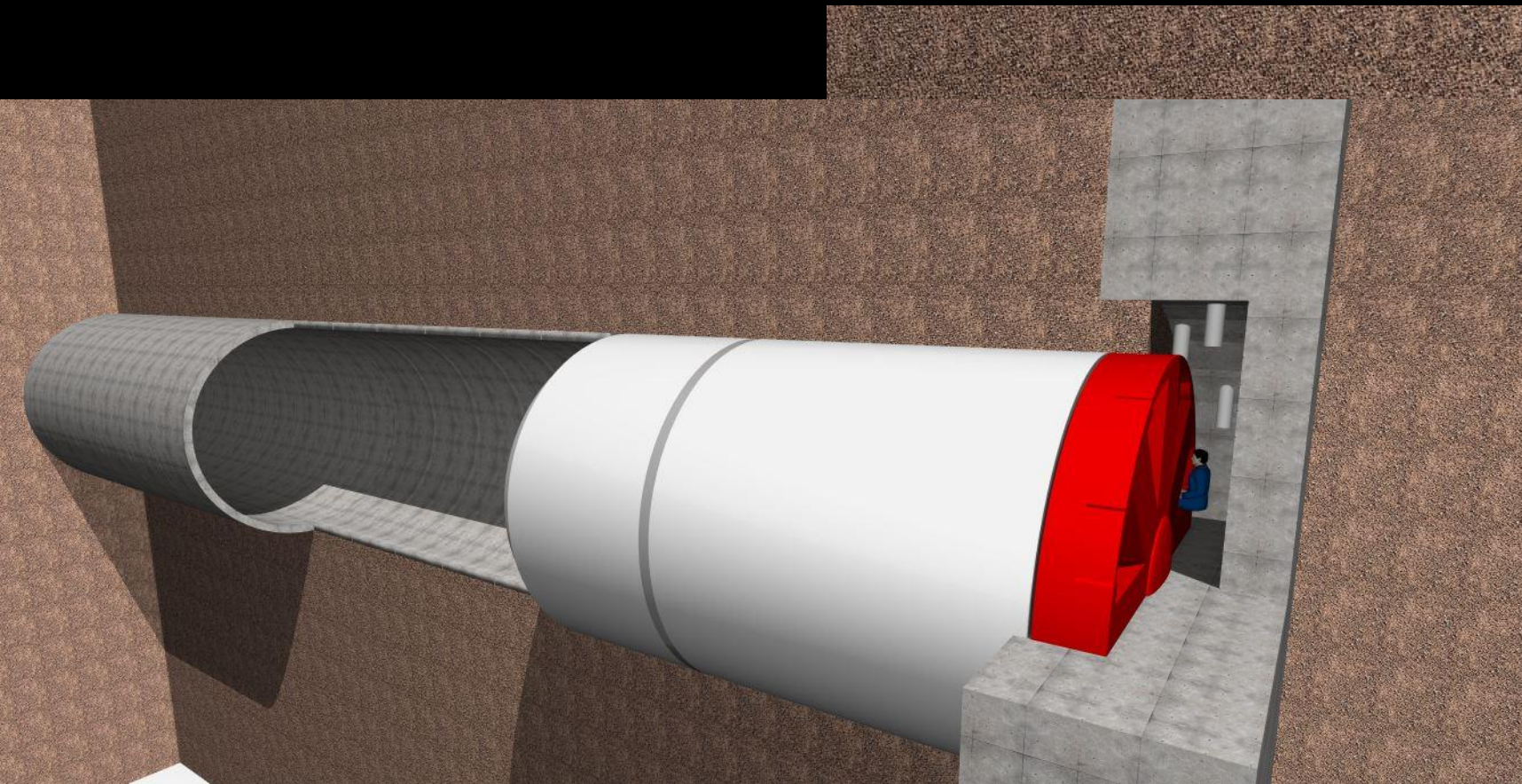
















Adobe Acrobat  
Document