



# LA PROSPETTIVA INTERNAZIONALE DELLA VIS

Francesca Viliani & colleghi IAIA

LA VALUTAZIONE DI IMPATTO SULLA SALUTE IN ITALIA: SCENARI,  
STRUMENTI, STRATEGIE

L'avvio del progetto CCM "Tools for Health Impact Assessment"

Bologna, 17-18 settembre 2014



## Agenda

- Volontario e Normato
  - esempi
- Valutazione d'Impatto
- Oggetto della VIS
  - Politiche, piani, progetti
- Salute e Valutazione d'Impatto

HIA

Health Equity

Social View of Health

Environmental Health

Regulatory Environmental Impact Assessment

Environmental Disasters

1950s

1960s

1970s

1980s

1990s

2000s

1956 Clean Air Act (UK)

1962 Silent Spring

1972 Lake Pedder Dam controversy (Australia)

1980 The Black Report (UK)

1990 Concepts & Principles of Equity in Health

2001 enHealth HIA Guidelines (Australia)

1959 Minamata Bay (Japan)

1969 Santa Barbara Channel (USA)

1972 The Indian Wildlife (Protection) Act

1980 International Association for Impact Assessment formed

1990 Environmental Protection Act (UK)

2004 Equity Focused HIA Framework (Australia)

1969 US National Environmental Policy Act (USA)

1974 Lalonde Report (Canada)

1984 Bhopal (India)

1990 Canadian Environmental Assessment Act

2005 Health included in IFC Performance Standards

1969 Cuyahoga River Fire (USA)

1974 Environmental Protection (Impact of Proposals) Act (Australia)

1986 Ottawa Charter

1992 Asian Development Bank HIA Guidelines

2005 Guide to HIA in the Oil and Gas Sector

1978 Seveso (Italy)

1986 Chernobyl (Ukraine)

1994 Framework for Environmental and Health IA (Australia)

2006 Bangkok Charter

1978 Love Canal (USA)

1989 Exxon Valdez Oil Spill (USA)

1995 EU Treaty Article 129

2007 1<sup>st</sup> Asia-Pacific HIA Conference (Australia)

1978 WHO Seminar on Environmental Health Impact Assessment (Greece)

1995 Intersectoral Action for Health (Australia)

2007 HIA's use included in Thailand's Constitution

1978 Declaration of Alma Ata

1996 HIA: An idea whose time has come?

2007 1<sup>st</sup> HIA in the Americas Workshop (USA)

1979 Three Mile Island (USA)

1997 Jakarta Declaration

2008 WHO Commission on the Social Determinants of Health: Closing the Gap in a Generation

1998 Independent Inquiry into Inequalities in Health (UK)

2009 Montara West Atlas Oil Spill (Australia)

1998 1<sup>st</sup> HIA Conference (UK)

1998 Merseyside Guidelines for HIA

1998 The Solid Facts

1999 Gothenburg Consensus Paper on HIA



## VIS

	<u>Volontario</u>	<u>Normato</u>
<u>Livello Regionale/ Nazionale</u>	<p>Countries having policies that support HIA but do not require it:</p> <ul style="list-style-type: none"> <li>Ø Many European countries</li> <li>Ø United States of America</li> <li>Ø Increasing number of Asian countries (e.g. China and Mongolia)</li> </ul>	<p>Different types of legislations and requirements at national or sub-national level:</p> <ul style="list-style-type: none"> <li>Ø Certain states of Australia (e.g. Tasmania and Victoria), Canada and New Zealand</li> <li>Ø Some Asian countries (e.g. Republic of Korea, Lao People's Democratic Republic, the Philippines, Thailand and Viet Nam)</li> </ul>
<u>Livello Internazionale</u>	<p>International institutions recommending HIA as an important approach for health promotion:</p> <ul style="list-style-type: none"> <li>Ø WHO</li> <li>Ø European Union</li> <li>Ø Regional development banks (e.g. ADB)</li> <li>Ø Private sector (e.g. ICMM, IPIECA)</li> </ul>	<p>Requirement that human health be considered according to IFC performance standard 4:</p> <ul style="list-style-type: none"> <li>Ø Loan agreement with IFC</li> <li>Ø Loan agreement with EPFIs (79 adopting finance institutions as of February 2013)</li> </ul>



## VIS: ingredienti per il successo

- Legislazione e linee guida sono dei facilitatori, ma non sono sufficienti.
- E` anche necessario:
  - Migliori evidenze per uso in VIS e sulla validita della VIS;
  - Capacita tecnica;
  - Risorse umane e finanziarie;
  - Valutazione dei VIS condotti;
  - Leadership e volonta politica coordinata;
  - Capacita e ruolo di "Salute Pubblica" in collaborazione intersettoriale.





# Stati Uniti

THE PEW CHARITABLE TRUSTS



THE SOCIETY OF PRACTITIONERS OF HEALTH IMPACT ASSESSMENT  
**SOPHIA**

SOPHIA is an organization serving the needs of Health Impact Assessment (HIA) practitioners in North America and worldwide



Wales Health Impact  
Assessment Support Unit  
Uned Gymorth Asesu  
Effaith ar Iechyd Cymru

[News & Events](#)

Search

[About Us](#)

[HIA Conferences and Workshops held in Wales](#)

[Current Activity](#)

[Case Studies and Case Study Leaflets](#)

[HIA and the Planning System in Wales](#)

[HIA Reports/Resources/Useful Links](#)

[Contact Us](#)

[Site Map](#)

[Feedback](#)

[Cymraeg](#)

Welcome to WHIASU



Cardiff Institute of Society and Health  
Athrofa y Gymdeithas ac Iechyd Caerdydd

Welcome to the Wales Health Impact Assessment Support Unit (WHIASU) website

Included in this site is information on health impact assessment (HIA) in Wales, news and recent developments. This website aims to provide a resource to those currently practicing HIA and those who are new to it and looking for information. There are details of completed HIAs in Wales since 1997 and other HIA activities from the Unit plus links to other useful resources.

The key roles of WHIASU are:

- To support the development and effective use of the health impact assessment (HIA) approach in Wales through building partnerships and collaborations with key statutory, voluntary, community and private organisations in Wales;
- To provide direct information and advice to those who are in the process of conducting HIAs;
- To contribute to the provision of new research, and provide access to existing evidence, that will inform and improve judgements about the potential impacts of policies, programmes and projects.



La prospettiva Internazionale della VIS

# Portali VIS Svizzera & Spagna

- [ACTUALITE](#)
- [EIS EN BREF](#)
- [BASES THEORIQUES](#)
- [EIS EN SUISSE](#)
- [L'ASSOCIATION](#)
- [RESSOURCES](#)
- [BIBLIOGRAPHIE](#)
- [REALISATIONS](#)
- [NEWSLETTER](#)
- [Portail](#)

[Inscription à la newsletter](#)

## BIENVENUE

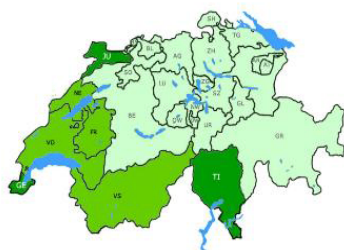
## ACTUALITES

### Bienvenue sur le site de l'Association Suisse pour l'Evaluation d'Impact sur la santé (EIS).

Ce site présente l'association, ses objectifs et ses activités et fournit aussi bien des contenus théoriques et méthodologiques que des informations sur les différentes expériences suisses en matière d'EIS. Il contient également des ressources en lien avec l'EIS pour les personnes qui veulent en savoir plus sur cet outil.

L'association dispose aussi d'un bulletin d'information électronique qui paraît 3 à 4 fois par année. Pour le recevoir, cliquez [ici](#) !

Si votre institution souhaite devenir membre de l'association, vous pouvez contacter le secrétariat en cliquant [ici](#) !



### VIDEOS: L'opinion des experts sur l'EIS

Welcome to the Swiss Health Impact Assessment (HIA) Association.

Rechercher

[Intranet](#)

[Zone Invité](#)  
[Créer un compte](#)

[Allemand](#) 

- [Inicio](#)
- [La EIS](#)
- [El proceso EIS](#)
- [Experiencias EIS](#)
- [Evidencia](#)
- [Documentación](#)
- [Novedades](#)
- [Enlaces](#)

**creis**  
Centro de Recursos de Evaluación de Impacto en Salud



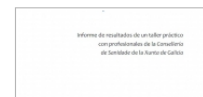
## Novedades destacadas

[15/09] Health Impact Assessment in New South Wales &...



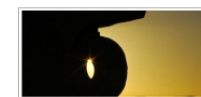
[Leer más...](#)

[11/09] Evaluación del Impacto en Salud. Implantación en...



[Leer más...](#)

[08/09] The Impact and Effectiveness of Equity Focused...



[Leer más...](#)

 Escuela Andaluza de Salud Pública  
CONSEJERÍA DE IGUALDAD, SALUD Y POLÍTICAS SOCIALES

buscar...

[Suscríbete al Boletín CREIS](#)

## Tweets

 **CREIS.EASP** @CREISEASP 16h  
10 ámbitos de acción local para avanzar la equidad en salud actuando sobre DSS (ingl) [instituteofhealthequity.org/projects/local...](http://instituteofhealthequity.org/projects/local...) ... via @davidjbuck  
[Abrir](#)

 **CREIS.EASP** @CREISEASP 16h

## INICIO

El CREIS es un nuevo recurso especializado en la Evaluación del Impacto en Salud (EIS), impulsado desde la Escuela Andaluza de Salud Pública, empresa pública de la Consejería de Salud de la Junta de Andalucía. La creación del CREIS responde al interés creciente en torno a la EIS como nueva herramienta para la formulación de políticas más saludables y más justas.

[¿Qué información y recursos ofrece el CREIS?](#)



**A Pocket Guide to Health Impact Assessments**

This *Pocket Guide* is a 'quick-reference' supplement to the IPECA/OGP publication entitled *A Guide to Health Impact Assessments*. It provides a summary checklist of activities to consider when conducting health impact assessments in the oil and gas industry.

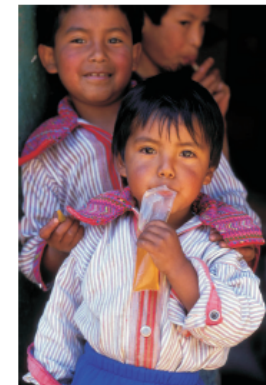
**ICMM**  
International Council  
on Mining & Metals

## Good Practice Guidance on Health Impact Assessment



**IFC** International  
Finance Corporation  
World Bank Group

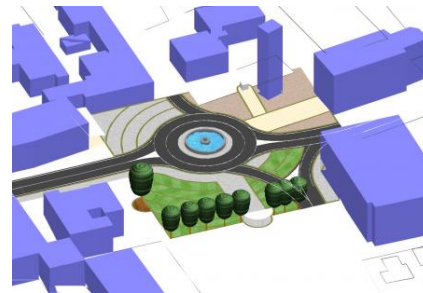
**Introduction to Health Impact Assessment**



La pr...  
...a internazionale della VIS



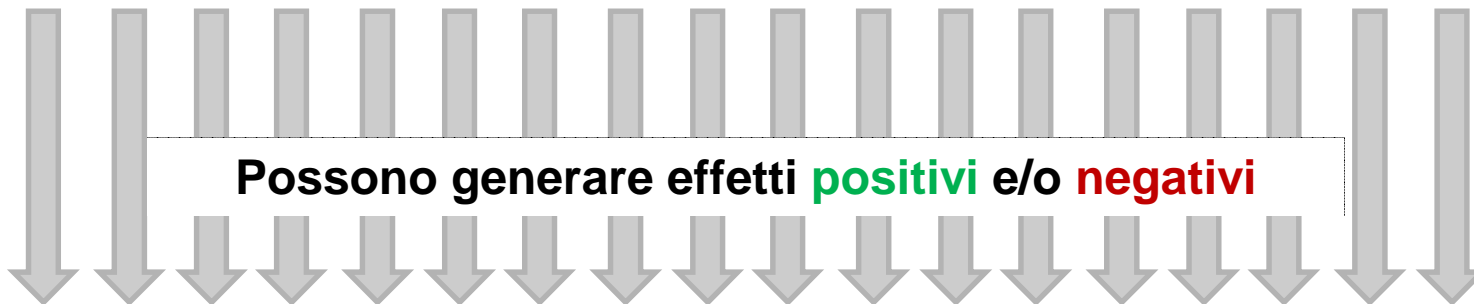
Politiche



Piani & Programmi



Progetti



Ambiente

Società

Salute

**Obiettivo di Valutazione d'Impatto:**

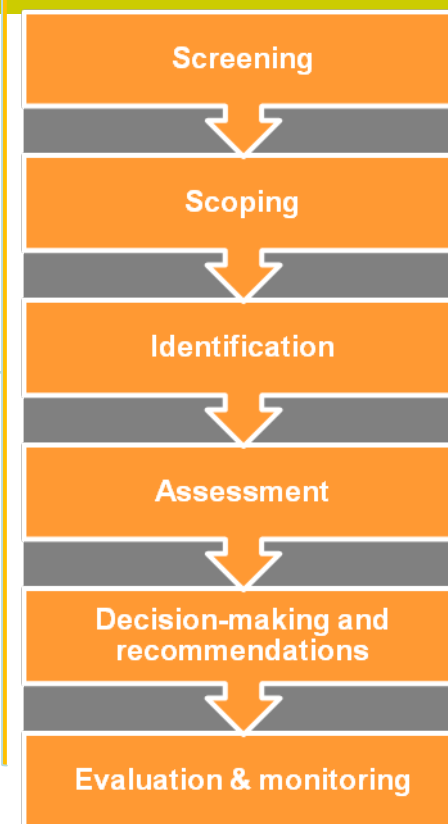
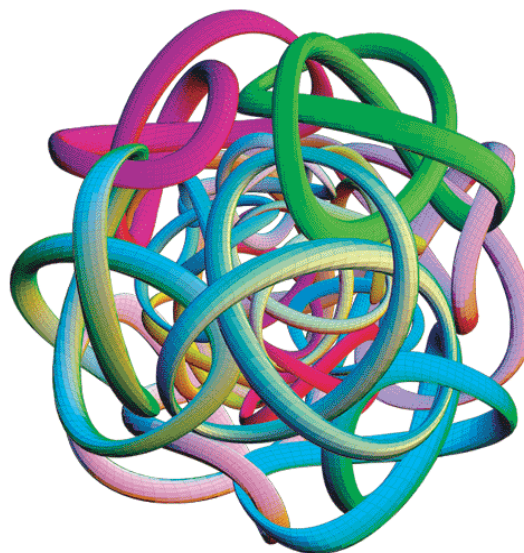
Ø Minimizzare o evitare impatti **negativi**

Ø Massimizzare impatti **positivi**

**Istituzioni e  
Organizzazioni**

**Pianificazione e sviluppo  
di politiche**

**VIS processo  
strutturato**





Tactical	Technical
	<input type="radio"/>
	<input type="radio"/>
	<input type="radio"/>
<input type="radio"/>	
<input type="radio"/>	
<input type="radio"/>	
<input type="radio"/>	<input type="radio"/>
<input type="radio"/>	<input type="radio"/>

1. IDENTIFY THE SUBSTANTIVE ISSUES DRIVING THE POLICY UNDER DEVELOPMENT

2. FOCUS ON OPTIONS EARLY AND THROUGHOUT

3. DEVELOP AND PROVIDE APPROPRIATE DEMOGRAPHIC HEALTH DATA AS EARLY AS POSSIBLE

4. BECOME INVOLVED IN PLANNING RATHER THAN WAITING TO ASSESS PLANS

5. DEVELOP NECESSARY STRUCTURAL SUPPORTS FOR COLLABORATION INCLUDING INSTITUTIONAL MANDATES AND ORGANISATIONAL STRUCTURES

6. FOSTER RELATIONSHIPS AT ALL TIMES

7. UNDERSTAND CORE PROCEDURAL POINTS AND HOW TO INFLUENCE THESE WHILE BEING PREPARED FOR THESE TO OCCUR HAPHAZARDLY

8. DEVELOP PERSONAL SKILL AND COMPETENCE TO WORK COLLABORATIVELY



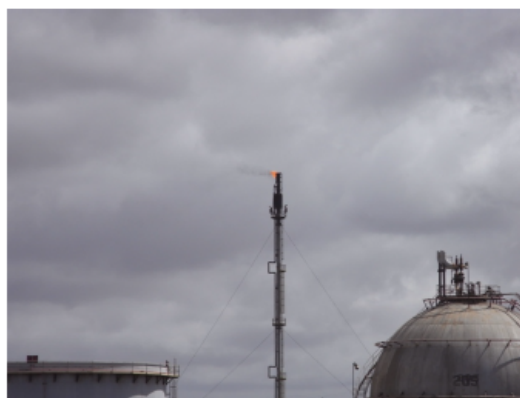


La prospettiva Internazionale della VIS

# VIS di un Piano di sviluppo industriale

SHIA of Ghana oil and gas development activities – Progress Review Report (December 2013)

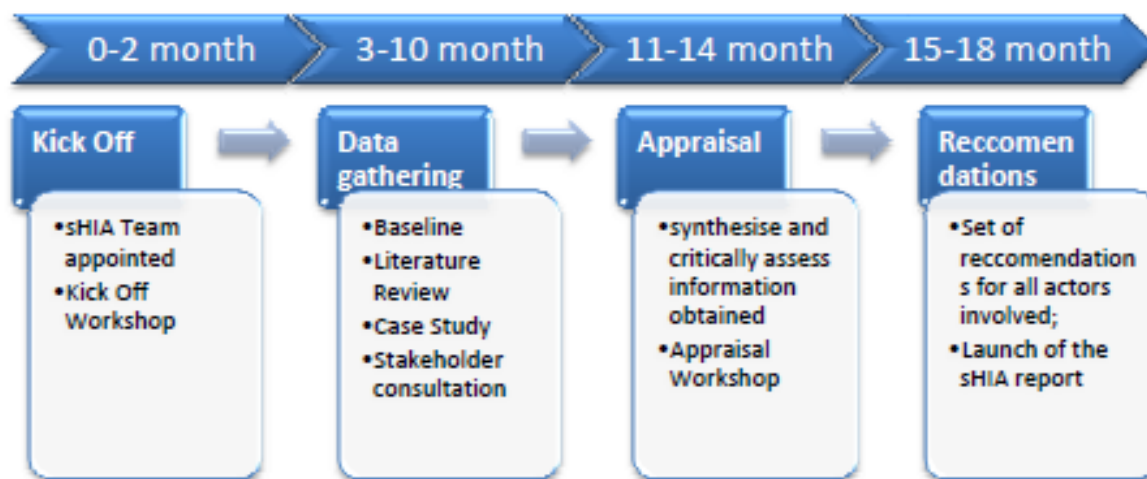
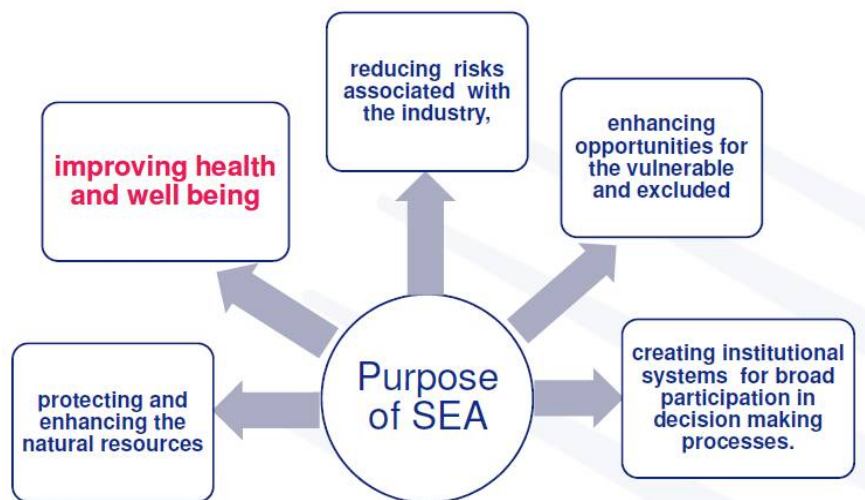
## SHIA OF GHANA OIL AND GAS DEVELOPMENT ACTIVITIES PROGRESS REVIEW REPORT



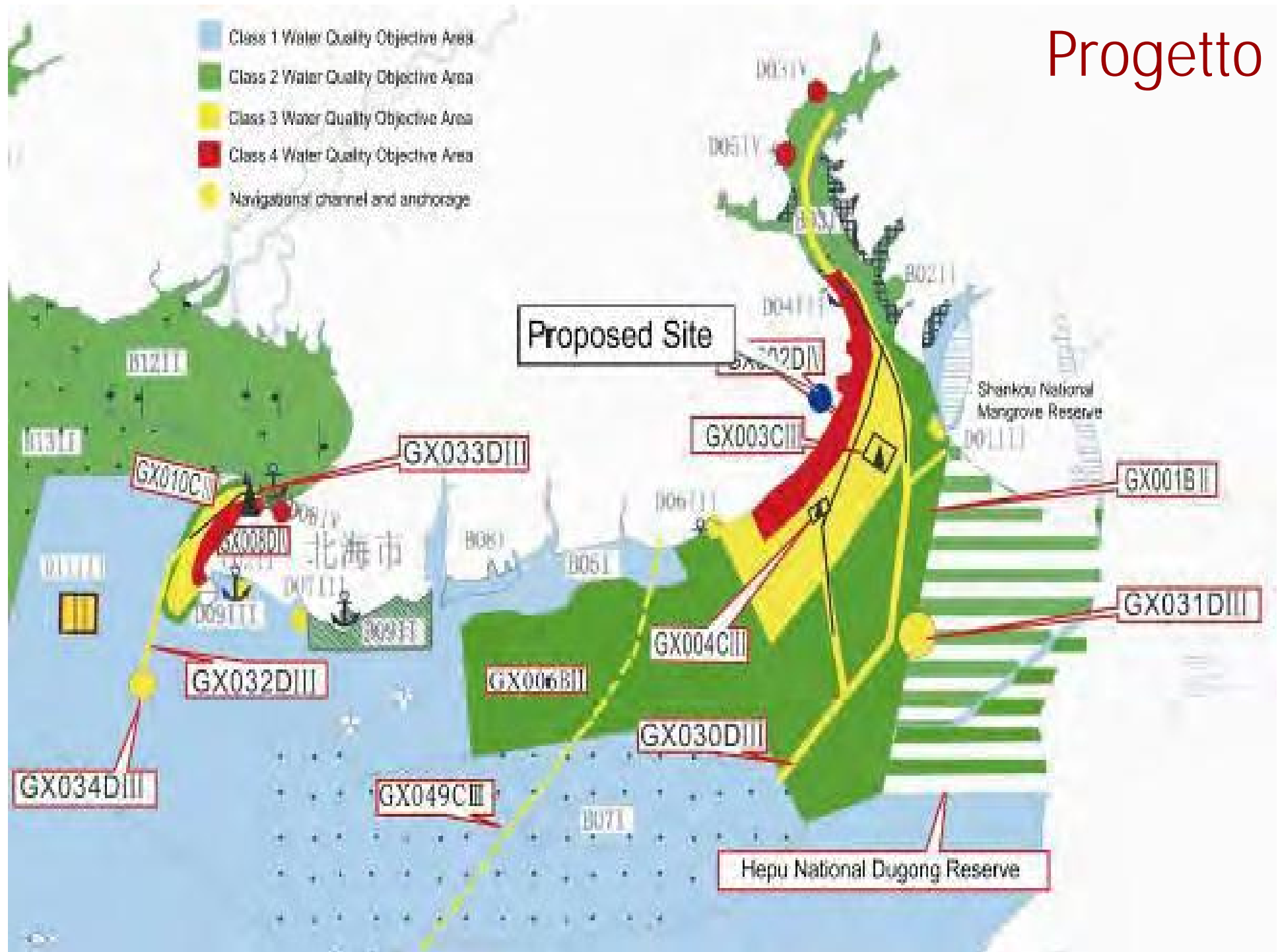
DECEMBER 2013

# La VAS ha attivato la VIS

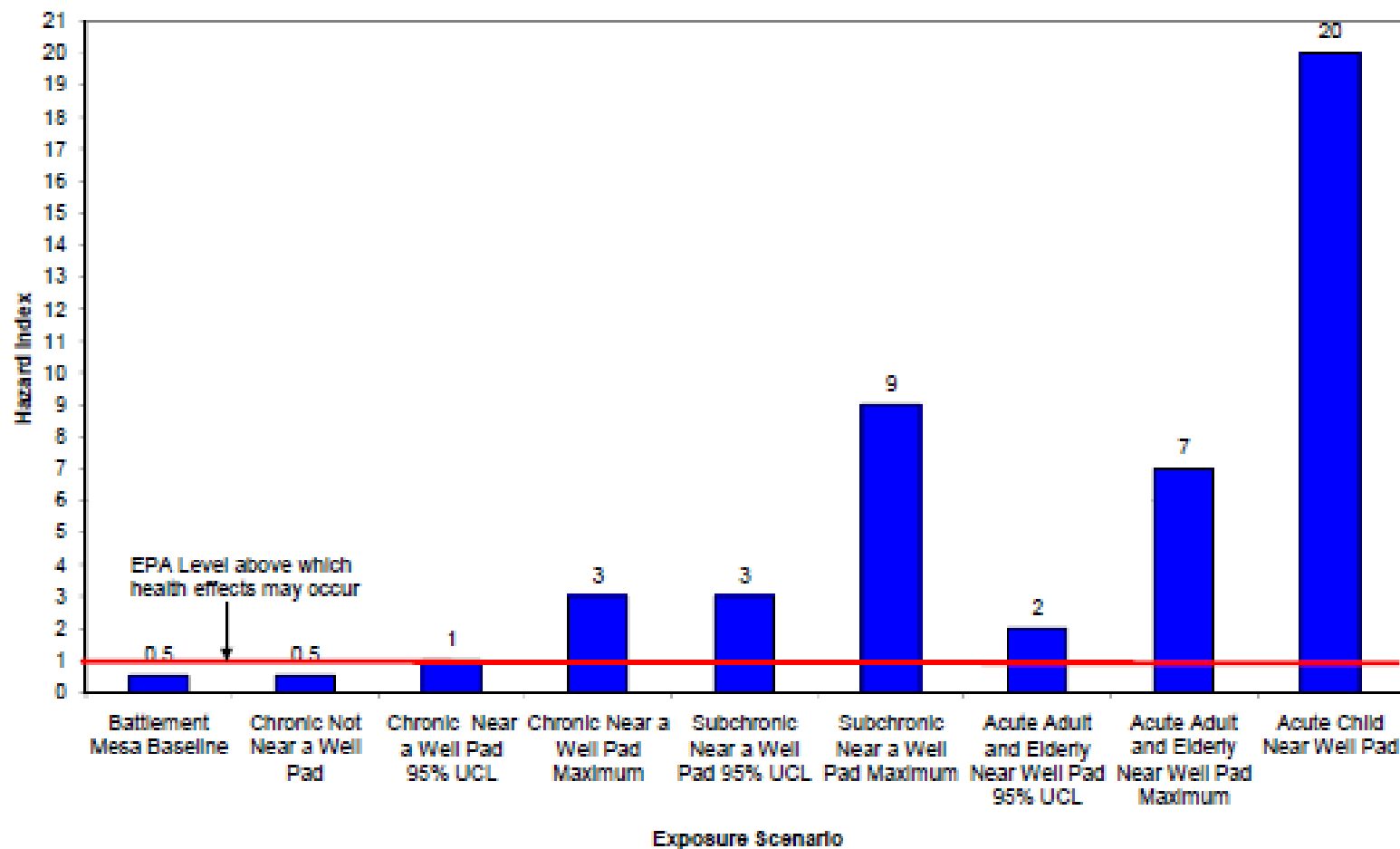
La prospettiva Internazionale della VIS



# Progetto



## Esempio: scenari di esposizione a non-carcinogeni - HIA Battlement Mesa





## Anche impatti psicosociali



## Essere o non essere? VIS o Salute in VIA/VAS?





# “Health in Impact Assessments”



- How can the various assessments contribute to promoting and protecting human health?
- How can further integration of health support other forms of impact assessments? What experiences can be shared across the various impact assessment types?
- What forms of, and what levels of, integration seem advisable?
- What should be seen as priorities for further development?

**DRAFT by 11 Sep 2014**

(incl. by authors revised EIA, SA, SIA & HIA chapters + language edits)

## Health in Impact Assessments

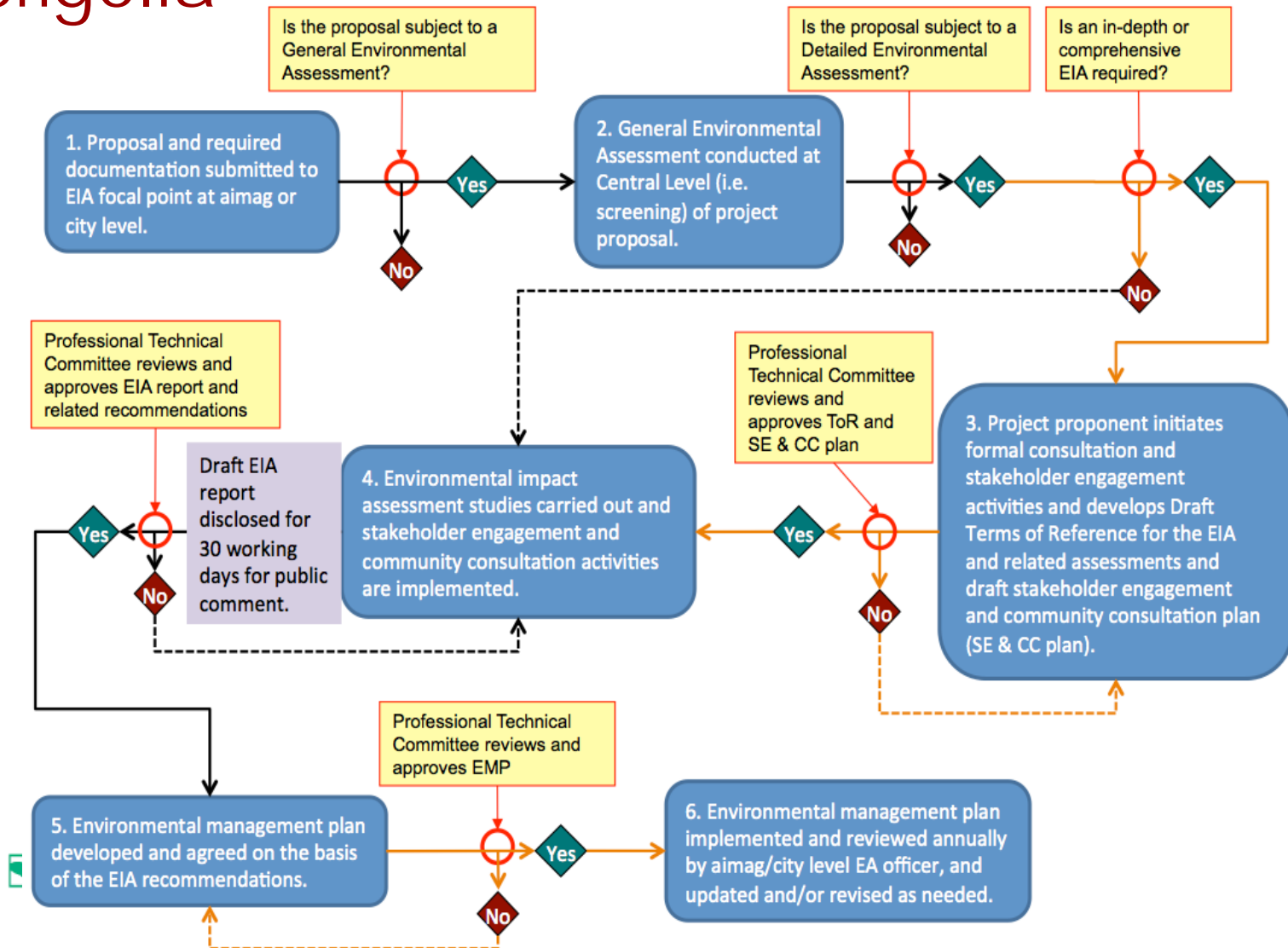
Opportunities not to be missed

Edited by Rainer Fehr, Francesca Viliani, Julia Nowacki and Marco Martuzzi



# Mongolia

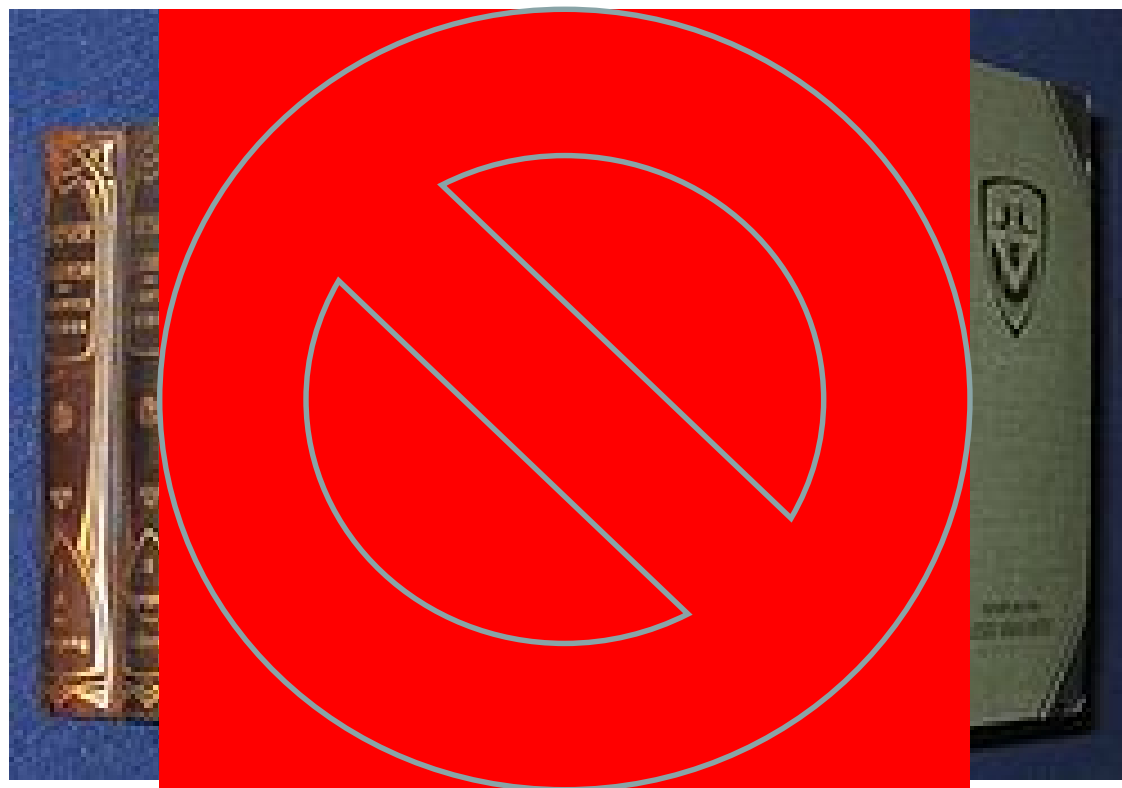
La prospettiva Internazionale della VIS





## ESHIA / Integrated Impact Assessment

La prospettiva Internazionale della VIS





## Salute negli Studi d'Impatto:

- Salute e` considerata da molte valutazioni di'imappto, ma la copertura e` molto variabile
- Includere una valutazione sistematica dei possibili impatti sulla salute sia nello screening che nello scoping, attraverso la revisione di tutti i possibili determinanti
- Dettagliare nella baseline lo stato di salute delle comunita residenti e la presenza di gruppi vulnerabili o sensibili
- Discussione sul "casual pathways" che lega le attivita di progetto/politica a cambi sui determinanti e quindi le conseguenze sulla salute
- Miglior utilizzo delle evidenze sia quantitative che qualitative per determinare il casual pathway e la categorizzazione degli impatti
- Discussione sulla distribuzione differenziale degli impatti sui gruppi vulnerabili/sensibili (diseguaglianze)



Home

Registration

Submissions

Program

More Info

IAIA15  
ABSTRACTS INVITED

PAPER AND POSTER ABSTRACT SUBMISSIONS WILL OPEN IN OCTOBER 2014.

La prospettiva Internazionale della VIS

Impact assessment in the digital era

DATES: 20-23 April 2015

LOCATION: Florence, Italy



Grazie

[Francesca.viliani@internationalsos.com](mailto:Francesca.viliani@internationalsos.com)

Presentazione realizzata con il contributo di Mirko Winkler, Patrick Harris, Ben Harris-Roxas ed altri colleghi della Sezione Salute di IAIA

La prospettiva Internazionale della VIS