



 Swedish Society for Nature Conservation

Report

Home sweet home?
– dusty surprises under the bed

Content

Preface	3
Summary	4
Introduction	5
Methods and materials	8
Results	11
Discussion	13
The Swedish Society for Nature Conservation's recommendations and demands	16
Fact boxes	18
References	20
Annex I	24
Annex II	30
Annex III	33
Annex IV	35
Annex V	39
Annex VI	43
Annex VII	45

Text: Ylva Grudd, David Gunnarsson och Andreas Prevodnik

Layout: Ingela Espmark

ISBN: 978-91-558-0069-7

Tryckeri Åtta 45, Stockholm 2011

Produced with economic support from Sida. Sida has not participated in the production of the publication and has not evaluated the facts or opinions that are expressed.

Preface

In the supposed safety of the home, there are toxic surprises. Ordinary household dust, namely, acts as a reservoir for many environmental pollutants. Chemical compounds may be long lived in the indoor environment, where the air is dry, and UV light, and large amounts of degrading microbes are missing. Metals cannot be degraded, just like in the outdoor environment. Investigations of the content of chemicals in dust, have demonstrated the diversity of chemicals occurring in our homes. Involuntarily, we live in a complex cocktail of chemicals, the consequences of which are yet to be seen. Many of the chemicals in the cocktail are also likely to interact with one another. Effects may be added, or strengthened beyond added effects (i.e. synergistic effects).

In this study, just as in earlier ones, we found a large number of endocrine (hormone) disrupting chemicals. The dust samples were from 12 countries all over the globe. Hormones regulate everything from mood to gender. They are crucial to metabolism, the nervous system, and reproduction. Hormones are usually active at very low concentrations and during narrow time spans. The same goes for hormone disrupting chemicals (so called endocrine disruptors) that mimic hormones, or inhibit hormone production. Because of this, even low concentrations of endocrine disruptors in the external environment, may have adverse effects in humans and other organisms.

Apart from illustrating the diversity of chemicals in our homes (the household dust mirrors this), and the fact that many of the chemicals are endocrine disruptors, with known combination effects, the Swedish Society for Nature Conservation (SSNC) wants to highlight shortages in the current risk assessment methodology applied by authorities worldwide. The shortages are particularly remarkable when it comes to endocrine disruptors, and chemicals with combination effects. The present standardized test methodology with high exposure concentrations and short exposure times are not designed for detection of hormone disruption, which may occur at very low concentrations,

and manifest itself at a completely different stage of the life cycle of the organism.

From an ethical point of view and to make it realizable to test many different chemicals in a short time, other methodologies than animal tests are required. Highest priority should be given to research aiming to improve cell-based methods, and computer simulation models. SSNC also shows that there is already a simple mathematic model available for taking combination effects from chemicals with corresponding modes of action into consideration – the “dose addition model” – a model that could immediately be adopted for risk assessments.

Furthermore, REACH needs to be modified in order to take hormone disruption into account in the evaluation of chemicals. SSNC has suggested suitable measures.

The starting point in politics must be the protection of foetuses and children – the most sensitive individuals. All risk assessments need to be based on a child perspective. Known or suspected hormone disruptors should be banned at once, in accordance with the precautionary principle.

SSNC is of the opinion that Sweden, with this as a starting point, needs to push for an ambitious chemicals politics in the EU and internationally. This will increase the pressure on other countries, and will result in adequate protection in Sweden earlier. Endocrine disruptors in notorious groups of chemicals such as brominated flame retardants, phthalates and organofluorine chemicals need to be regulated quickly. They are found in the dust under your bed – they can potentially harm your children, and their ability of getting children in the future. This is unacceptable.



Mikael Karlsson

President of the Swedish Society for Nature Conservation

Summary

Home sweet home – but is it really so sweet? This study has shown that there are dusty problems lurking under our beds. Ordinary balls of dust contain a cocktail of chemicals. Several of them are known environmental toxicants that can affect our endocrine system, as individual chemicals or in combination with one another.

The Swedish Society for Nature Conservation has shown in this study that a large number of chemicals are present in ordinary household dust around the world. The dust samples came from 12 countries: South Africa, Tanzania, Kenya, Uganda, the Philippines, Malaysia, Sweden, Belgium, Germany, the Czech Republic, Hungary and Italy. Household dust has a chemical content that varies between different sites, and also over time at the same site. However, our study is limited to providing a snapshot of the situation at the sampling sites.

On the basis of the results, we discuss deficiencies of present-day risk assessments that often fail to identify the risks and problems that exist. We therefore also present a method that provides a more true picture of the chemicals problem. The model is based on what is known as the concentration addition method, which takes greater account

of combination effects of chemicals, known as cocktail effects. Using this methodology, we show that there is an evident health risk associated with the combined exposure to phthalates both in the EU (the Czech Republic) and in the Global South¹ (the Philippines). Furthermore, the results show that the level of bisphenol A (BPA) was very high in the sample from the Philippines. In this report we have taken account of the most sensitive individuals – small children.

The report concludes with a number of recommendations and demands that principally apply to the EU's chemicals regulation REACH and how it needs to be modified to provide better protection against endocrine disruptors and other types of hazardous chemicals.

It is alarming that chemicals with negative effects on the environment and health that have long been known are present in household dust under our beds in many parts of the world. In addition, the levels of a number of chemicals exceeded those previously measured in household dust. The majority of these chemicals are potential endocrine disruptors and are produced by humans. They do not belong in the environment and should not be in the dust in bedrooms!

¹ Global South is a term used in the world of development assistance and relates to developing countries and transition economies.

Introduction

Few of us reflect on the fact that our homes are full of chemicals – not just household chemicals, cosmetics and medicines, but also in building materials, paints and varnishes, carpets, wallpapers, furniture, electronic equipment, foods and much more besides. Some chemicals are deliberately added, for example flame retardants in furniture upholstery and electronics, or preservatives in foods and chemical household products and cosmetics. Other pollutants which people throughout the world unintentionally are exposed to are heavy metals in foods, all kinds of air pollutants and pollutants that have settled on hair, clothes and shoes from the outdoor environment and that enter the home with these. The diversity of chemicals and the complexity of the mixtures are increasing exponentially. Global production of chemicals increased from around one million tonnes in 1930 to four hundred million tonnes in 2001 (European Commission, 2001). Many of the chemicals that are in circulation in society have been poorly investigated, or have not been investigated at all, with respect to effects on the environment and health. We know even less about how chemicals interact in deliberate and unintentional mixtures.

Facts box:

Where do the chemicals end up indoors?

A number of chemicals, for example most heavy metals, end up in the dust with particulates. Volatile organic compounds may leave the objects in which they were originally present and create equilibria between the indoor air, the objects, and dust particles. Equilibrium in this context means that the chemical reaches a balance in the rate at which it leaves the object and changes into gaseous form and is then dissolved in dust, and the rate of dissolving back from dust to air and back to the object. This equilibrium is dynamic, and over time can result in varying concentrations of the chemical in the object, the air and dust, depending on temperature, air humidity and other factors in the home. Flame retardants, PCBs, phthalates, triclosan and several other preservatives, bisphenol A, PFOS and other perfluorinated substances and alkylphenols (e.g. nonylphenol), and many pesticides belong to the group of semi-volatile organic chemicals (Wechsler and Nazaroff, 2008). The semi-volatile organic compounds have a tendency to change into gaseous form, but then readily form equilibria with dust.

The breakdown of organic chemicals is very limited indoors, because of often dry air and the absence of UV light and larger quantities of degrading microorganisms. Air turnover in present-day well insulated buildings in cool climates is also limited, which contributes to a long turnaround time for chemicals in the indoor environment. Exposure to certain chemicals indoors may therefore be thousands of times greater than outdoors (Smith, 1988). Certain chemicals whose use has been limited or banned, for example PCBs², are now declining in the external environment and in foods, but may still be present in the indoor environment, which makes inhalation of polluted indoor air and polluted dust an increasingly important route of exposure (Voorhees, 2001; Harrad et al., 2006).

The dust we have analysed comes from home environments and is, in the remainder of this report, referred to as "household dust". It is a heterogeneous material made up of various size fractions, for example hair and flakes of skin (from humans and pets), viruses, bacteria, pollen, mould, mites, soot, ash, soil particles, textile fibres, abraded material from furniture and other household items or food remnants (Paustenbach et al., 1997). The dust acts as a reservoir for the chemicals in the indoor environment and reflects the chemicals to which people are potentially exposed in the home (Abb et al., 2009). Polluted dust can be inhaled, ingested as it is deposited on foods, and when children put dusty objects in their mouths, or be deposited on our skin, through which fat-soluble chemicals from the dust may be absorbed.

Exposure to chemicals in the home is influenced by the time we spend indoors. In industrialised and rich countries, people spend up to 90% of their time indoors (Brown et al., 1994; Mølhave et al., 1997). It is unclear what the situation is like in developing countries and transition economies. Age is another factor that dictates how much time we spend indoors. Young children spend more time in the home than adults (Geens et al., 2009). Other influencing factors are linked to physiology and behaviour. Children spend a lot of time close to the floor and in contact with other surfaces in

² Polychlorinated biphenyl ethers (there are many variants).

the home where dust settle, and young children frequently have "hand-to-mouth contact", which means that they commonly ingest more dust than adults (Lorber, 2008, Johnson-Restrepo and Kannan, 2009; Roberts et al., 2009). Children's skin is also thinner and their body surface area in relation to volume is larger than that of adults (<http://www.dotpharmacy.co.uk/upkids.html>). The potential skin uptake of chemicals is consequently greater than for adults (Plankett et al., 1999), for example from dust. Another possible factor influencing chemical exposure in the home is household economics. A correlation between income and exposure to brominated flame retardants was found in a study from California (Quirós- Alcalá et al., 2011). People from households with a low income were most exposed. The originators of the study explain the result as being due to the furnishings in low-income households probably being older and worn, or consisting of cheaper products of poorer quality. The furnishings would consequently disperse more flame retardants. The possibility of household articles in poor countries being of poorer quality and consequently becoming worn more quickly cannot be ruled out. The articles may be manufactured in countries with relatively weak chemicals legislation and control, and may therefore contain more hazardous chemicals.

There is a relatively large number of studies of the chemical content of household dust. The methods used for dust collection, analysed dust fractions, and analytical methods are, however, so varied that it is difficult to make direct comparisons of the results in different studies. The studies, nevertheless, give a hint to what chemicals may be found in household dust and the order of magnitude of the concentrations. Comparative studies have sometimes been made between different countries in a region (see for example Santillo et al., 2003), but to our knowledge no study has been carried out with wider global coverage in which all the samples have been collected and analysed by the same method. The purpose of this study was to illustrate the situation in countries in Africa, Asia and Europe. As individual households are included in the study, it is not possible to decide whether they are representative of the participating country or region concerned, but they can

provide a snapshot of what chemicals we can be expected to be exposed to through household dust in various parts of the world. At the same time, we wish to draw attention, with this study, to the diversity – cocktail – of chemicals people are exposed to daily and describe how we could take better account of combination effects that arise in this cocktail.

Studied chemicals

A selection of chemicals hazardous to the environment and health was analysed. These chemicals are capable, or are suspected of being capable, of affecting the body's endocrine system, have known cocktail effects, or may occur in household dust according to previously published dust studies. The chemicals can be broadly classified as described in Table 1.

A detailed list of analysed elements and compounds is provided in Annex I. The fact boxes contain further information about the chemicals that occurred at high levels in our study and that are considered in greater detail in the discussion section.

Cocktail effect

A combination effect, popularly known as a "cocktail effect", means that all chemicals in a mixture contribute to the properties of the mixture, such as toxicity. This may appear obvious, but to date it has almost always been the toxicity of the individual substances included in the mixture that has been looked at and no attempt has been made to estimate the aggregate effect. Several of the chemicals that have been analysed in this study have known cocktail effects together with other chemicals. Read more about this in the Swedish Society for Nature Conservation's report *Save the Men* (Naturskyddsforeningen, 2011).

Table 1: Grouping of studied chemicals and generalised properties

Group of chemicals	Properties
Brominated flame retardants (PBDEs)	Very persistent in nature. Accumulate in organisms, and many of them are capable, or are suspected of being capable, of disrupting the body's endocrine system, and consequently, among other things, affecting fertility and causing cancer.
Polychlorinated biphenyl ethers (PCBs)	Very persistent in nature and several of them are capable, or are suspected of being capable, of disrupting the body's endocrine system and, among other things, affecting fertility and causing cancer. PCBs are also classified as very toxic to aquatic organisms.
Phthalates	Break down easily in nature, but at least some of them can disrupt the body's endocrine system and consequently affect fertility. Some are classified as toxic to reproduction, and are suspected of being carcinogenic.
Bisphenol A	Accumulate in organisms due to chronic exposure and disrupt the body's endocrine system. Impairments of fertility and cancer are effects that have been seen in animal studies.
Alkylphenols	Persistent in nature and accumulate in organisms. Are to varying degrees endocrine disruptors and are capable, among other things, of affecting fertility.
Parabens	Preservatives that are rapidly broken down in the body, but which to varying degrees are endocrine disruptors and consequently, among other things, can affect fertility. The most potent endocrine disruptor parabens propyl- and butylparabens are included in this study.
Perfluorinated substances	Very persistent in nature and accumulate in organisms. Animal studies have shown that perfluorinated substances can affect the immune system, the body's endocrine system, birth weight and lead to deformities.
Pesticides	Methoxychlor, Prochloraz and Vinclozolin can disrupt the body's endocrine system, with effects such as fertility impairments and cancer.
Heavy metals, including methylated mercury	Metals are elements (cannot be broken down) and accumulate in the environment, and in organisms. Heavy metals are highly toxic, and lead and cadmium, for example, are carcinogenic. Mercury and methyl mercury damage the nervous system.

Methods and materials

Before this report was written, a review was made of data published, or otherwise made public, on household dust concentrations of the chemicals that were analysed in this study. The concentrations are presented in tabular form in Annex II. These data form the basis for comparisons with our results.

Data collection and descriptions of locations

All the dust samples analysed in this study were collected in bedrooms, as these are one of the rooms where people spend most time during the 24-hour period, regularly and in a relatively equivalent way in a global perspective. Dust has been analysed from bedrooms in six European countries (all EU Member States), four countries in Africa and two countries in south-east Asia. Outside the EU, dust was collected with the assistance of the Swedish Society for Nature Conservation's partners CAP³, EcoWaste Coalition⁴, Envirocare⁵, groundWork⁶, iLima⁷ and NAPE⁸. The Swedish Society for Nature Conservation has collaborated with ChemSec⁹ and its networks to carry out the collection of dust in Europe. Participating European organizations are: AMICA¹⁰ in Italy, Bund¹¹ in Germany, HEAL¹² (Health Environmental Alliance) and EPHA¹³ (European Public

Health Alliance) in Belgium, Levego¹⁴ (Clean Air Action Group) in Hungary and SSL¹⁵ (Society for Sustainable living) in the Czech Republic.

The table in Annex III contains a brief description of the sampling points and Annex IV photographs of these sites.

The bedrooms had not been vacuum-cleaned for a week, and the dust was collected around and under beds, as well as on beds, using identical hand-held vacuum cleaners and identical filter bags at all sites. The filters containing the collected dust were placed in the same type of aluminium foil at all the sampling sites to prevent influence of UV light, and in identical plastic bags, and were sent to the laboratory. Three samples per bedroom were taken in each country and were then pooled to produce one sample per country, as this reduces the risk of sample loss in transport and provides more true results for the bedroom concerned. In Kenya, the collection of dust was in part carried out differently, as samples were taken in three different bedrooms in suburbs of Nairobi. These three samples were also pooled.

Analytical methods

All analyses were coordinated by Eurofins Environment in Lidköping, Sweden. Eurofins analysed flame retardants, BPA, the metals and the PCBs; the SOFIA laboratory in Berlin the phthalates, phenols, parabens and pesticides.

As well as the dust the packaging material in which the dust was transported and the filters with which the dust samples were collected, were analysed. These samples served as blank samples, used to establish whether the analysed chemicals might have been added to the dust from the filters and packaging material, and if so how much.

A list of the extraction methods and standardised analytical methods used by the laboratories follows below (see Table 2).

3 CAP is a Malaysian organisation that works on consumer issues (<http://consumer.org.my/index.php/homepage/about-us>).

4 EcoWaste Coalition is a Philippine network of organisations that work on chemical issues and waste management (www.ecowastecoalition.org).

5 Envirocare is a Tanzanian environmental organisation that works on chemical issues, linked among other things to textile production (www.envirocaretz.org).

6 groundWork is a South African environmental organisation that works on issues concerning chemical safety and implementation of international chemical conventions nationally and regionally in Africa (www.groundwork.org.za).

7 iLima is a Kenyan environmental organisation that works on implementation of international chemical conventions in the country and to eliminate heavy metals and persistent organic pollutants, for instance in cosmetics (www.ilimakkenya.org).

8 NAPE is a Ugandan environmental organisation that works for the implementation of international chemical conventions in the country and offers capacity support to many other environmental organisations in Uganda (www.nape.or.ug).

9 ChemSec is a subsidiary organisation of the Swedish Society for Nature Conservation, with the EU as its principal platform. ChemSec works on political lobbying with regard to chemicals and assisting companies to anticipate legislation in the phasing-out of chemically harmful to the environment and health (www.chemsec.org).

10 AMICA, Association for Chronic Diseases of intoxication and / or Environmental, funded in 2003 with the aim of promoting knowledge and awareness about health problems caused by exposure to electromagnetic fields, environmental chemicals and products in common use. (<http://www.infoamica.it>).

11 BUND (Friends of the Earth Germany) is a non-profit, non-partisan, and non-confessional federal grassroots NGO (<http://www.bund.net>).

12 HEAL – Health environmental alliance is a not-for-profit organisation addressing how the environment affects health in the European Union (<http://www.env-health.org/>).

13 EPHA, is a member-led organisation, made up of public health NGOs, patient groups, health professionals, and disease groups working together to improve health and strengthen the voice of public health in Europe (<http://www.ephpa.org/>).

14 Clean air action group Hungary is one of the best-known environmental NGOs in Hungary. Founded in 1988 by three local green groups, it is now a national federation of 120 NGO's (http://www.levego.hu/en/about_us).

15 The Society for Sustainable Living (SSL) was established in September 1992 on the initiative of Josef Vavroušek (the first Environment Minister Czechoslovakia) as a voluntary, non-governmental, non-profit organization (<http://www.stuz.cz/>).

Table 2: Chemical, standardised test, extraction method and analytical method.

Chemical(number of varieties)	Standard test	Extraction method	Analytical method
Phthalates (12)	SF09B	ethyl acetate & acetone	GC-MS ¹⁰
Bisphenol (BPA)	GF059	methylbenzene followed by derivatisation	GC-MS
Flame retardants (PBDEs) (24)	CYR22	Soxhlet extraction with methylbenzene	GC-MS
Pesticides (3)	PSF03	ethyl acetate	GC-MS
PCBs (7)	PCB7_F	n-Hexane & acetone	GC-MS ¹¹
Alkylphenols	SF0VK	distillation followed by derivatisation	GC-MS
Methyl mercury	Me-Hg	distillation followed by aqueous	GC-MS
		phase ethylation	GC ¹²
Parabens (2)	PSF01	ethyl acetate	GC-MS
Pb (Lead) & Cd (Cadmium)	-	Micro wave assisted extraction with nitric acid & hydrogen peroxide	ICP-MS ¹³
Metallic mercury (Hg)	-	nitric acid	AFS ¹⁴
Perfluorinated substances (14)	PFC_M	methanol	LC-MS-MS ¹⁵

Estimation of exposure

There are plenty of estimates in the literature of the daily quantity of dust that children and adults take in through unintentional ingestion and inhalation of dust.

Table 3: Type of exposure, daily intake of dust and references

Type of exposure	Unit [mg dust/day]	Reference
Unintentional ingestion, children	20-200	See references in Oomen et al., 2008
Unintentional ingestion, adults	0.56-100	See references in Oomen et al., 2008
Inhalation, children	0.15- 0.34	Maertens et al., 2004
Inhalation, adults	0.81	Maertens et al., 2004

As can be seen from Table 3, unintentional ingestion accounts for most of the daily intake of dust. The Swedish Society for Nature Conservation therefore disregards inhalation in the analyses of our data. Information is also

lacking on how much dust is deposited daily on the skin, but this exposure route is probably of less significance than ingestion and inhalation.

The exposure estimates in this report are, therefore, based on involuntarily ingested dust (around 200 mg/day). We chose to calculate the estimations for children and a high daily intake of dust, in order to take account of the most sensitive individuals (that is to say active toddlers crawling around close to and on the floor). A baby's organ systems are under development, and babies are therefore especially sensitive to exposure to chemicals. We assume that 100% of the chemicals in the ingested dust is taken up by the body, which is a simplification of reality, but at the same time a safety factor in the calculation.

Daily exposure (daily intake (DI)) for the chemicals studied in the home environment was calculated using the following formula:

$$\text{Daily exposure/Daily intake} = (\text{involuntarily ingested dust} \times \text{measured concentration in dust sample}) / \text{body weight}$$

We have chosen 7 kg as the weight of children in the calculations of daily exposure, which is equivalent to a baby around 7 months old. At this age active toddlers are starting

¹⁶ Gas chromatograph linked to a mass spectrometer

¹⁷ Gas chromatograph with flame ionisation detector

¹⁸ Gas chromatograph with fluorescence detector

¹⁹ Inductively coupled plasma mass spectrometry

²⁰ Atomic fluorescence spectrophotometry

²¹ By what is known as triple quadrupole mass spectrometry

to shuffle forwards or crawl, and are at risk of taking in large amounts of dust from floor surfaces.

Tolerable daily intake (TDI)

Tolerable daily intake (TDI) indicates the quantity of a chemical, usually in mg/kg body weight and day, that a human is deemed capable of taking in through food every day throughout life, without contracting adverse health effects. Known TDI values for the studied chemicals are listed in Annex II. In cases where authorities have stipulated TDI values, these were primarily used for comparisons with the results in our study. Data from publications were used where no official TDIs were available. The Swedish Society for Nature Conservation is dubious about how the TDI values are set, but they serve as a basis for assessing risks according to accepted methodology in toxicological contexts. Risk indexes were calculated using the following formula:

$$\text{Risk index} = (\text{daily exposure} + \text{background exposure}) / \text{TDI}$$

According to present TDIs, there is not expected to be any evident risk to human health, when the risk index is less than 1 (Oomen et al., 2008). As we do not know the background

exposure through food for the studied chemicals and the individuals who live in the homes where the dust samples were taken, it is likely that risk index underestimate the real situation. As a precaution, we therefore choose to highlight all samples and chemicals that have a risk index greater than 0.8 (as Oomen et al., 2008, did in their study).

Cumulative risk assessment of phthalates

For chemicals that act in the same way, Koch et al. (2001) have proposed a new risk assessment model based on TDIs. The risk index is calculated for each chemical with the same mode of action in a mixture. The sum of the risk indexes becomes a cumulative TDI value according to the formula below²²:

$$TDI_{\text{cumulatively summed}} = (\sum (DI/TDI)) * 100$$

If this exceeds 100%, the tolerable daily intake of the chemicals in the mixture has been exceeded.

In this report we have made such a calculation for the four phthalates BBP, DBP, DEHP and DINP. As for TDI, a value above 100% means that the exposure is associated with substantial health risks according to present TDIs.

²² The Greek letter sigma is used in mathematical contexts to designate sum. DI is daily intake.

Results

The emphasis here is put on the results highlighted by the Swedish Society for Nature Conservation in the discussion paragraph. A more detailed presentation of the results can be found in Annex V (running text and table of measured concentrations in the samples). The table in Annex VI contains an estimated daily exposure for a 7-month-old baby.

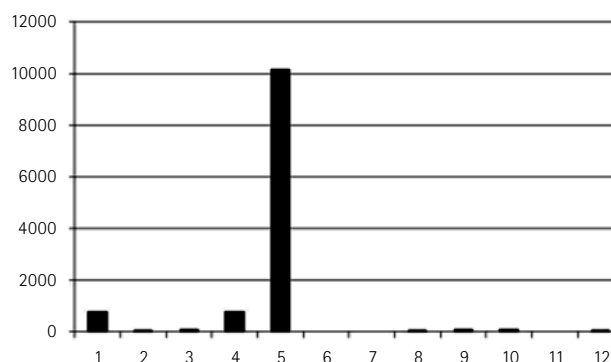
The concentrations of the analysed chemicals varied in the different samples (see Annex V). The individual sample that differs most from the others by consistently having high levels of chemicals is the Philippines.

The table in Annex VII lists the samples and sample results that deviate from the concentration ranges measured in other studies. The chemicals that exceed the levels in previous studies are brominated diphenyl ethers (flame retardants) and phthalates (plasticisers of plastics, principally PVC), and the greatest deviations are in dust samples from the Global South, particularly in the sample from the Philippines, but also in the sample from Uganda. DINP was found at a high level in the sample from Hungary.

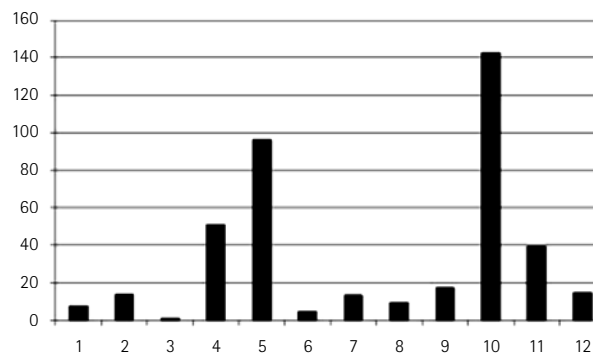
The mean concentration of the studied flame retardants in the dust samples from the six countries from the South was 349.4 µg/kg, and 60.2 µg/kg in the dust samples from the six EU Member States.. The mean concentration of the studied phthalates in the dust samples from the six countries from the Global South was 684.8 mg/kg, and 934.8 mg/kg in the dust samples from the six EU Member States.

Summed concentrations (referred to below as cumulative concentrations) for the studied brominated flame retardants and the phthalates were calculated for each sample and are presented in Graphs 1A and 1B as relative values, normalised against the samples with the lowest cumulative concentrations (the sample from Malaysia for the flame retardants; from Kenya for the phthalates). The cumulative concentration of brominated flame retardant in the sample from the Philippines was more than 10 000 times greater than in the sample from Malaysia.

Graph 1: A) Summed concentrations of studied brominated flame retardants.



Graf 1: B) Summed concentrations of studied phthalates.



1 = South Africa, 2 = Tanzania, 3 = Kenya, 4 = Uganda, 5 = Philippines, 6 = Malaysia, 7 = Sweden, 8 = Germany, 9 = Belgium, 10 = Czech Republic, 11 = Hungary, 12 = Italy

Table 4 a: Daily exposure (intake) of phthalates from dust, in relation to TDI values and cumulatively summed TDI. Relates to the Philippine sample.

Phthalate	Daily intake (DI) ($\mu\text{g}/\text{kg}/\text{day}$), Philippines, 7-month-old baby	Tolerable daily intake (TDI) ($\mu\text{g}/\text{kg}/\text{day}$)	% of TDI
BBP	0.77	500	0,15
DEHP	47.7	50	95.4
DINP	15.7	150	10,5
DBP	0.49	10	4.9
TDI <small>cumulatively summed</small>			110.95

Table 4 b: Daily exposure (intake) of phthalates from dust, in relation to TDI values and cumulatively summed TDI. Relates to the Czech sample.

Phthalate	Daily intake (DI) ($\mu\text{g}/\text{kg}/\text{day}$), Czech Republic, 7-month-old baby	Tolerable daily intake (TDI) ($\mu\text{g}/\text{kg}/\text{day}$)	% of TDI
BBP	$13.7 \cdot 10^{-3}$	500	0.0027
DEHP	13.4	50	26.8
DINP	0	150	0
DBP	8.29	10	83
TDI <small>cumulatively summed</small>			109.8

Discussion

With this study, the Swedish Society for Nature Conservation has shown that a series of hazardous chemicals are to be found in ordinary household dust around the world. In several cases the concentrations were higher than reported previously (see the table in Annex VII). The majority of the chemicals are potential hormone disruptors, and are produced by humans. Many have documented combination effects. They do not belong in the environment and should not to be present in the dust in our bedrooms. This shows how unsustainable our chemical-intensive society is today.

The study also points to the complexity of the chemical cocktail we are exposed to daily. We have only measured a small number of chemicals in dust. The dust samples probably contain far more. It is known that combination effects may exist for some of the groups of chemicals found, for example phthalates, and it can be guessed that many more chemicals in the dust might have combination effects, including effects that are not solely additive. The results provide a snapshot of the situation at the sampling sites, and have, furthermore, been used to shed light on the deficiencies in present-day risk assessment.

In the report *Save the Men* (Naturskyddsföreningen, 2011), which the Swedish Society for Nature Conservation presented in the spring of 2011, we discussed the key role of the endocrine system for a number of functions in the body. This applies to everything from reproduction (physiology and behaviour), the development of the nervous system (see for example Ahmed et al., 2008; Nunez et al., 2008) to metabolism (see for example Moller et al., 2009; Vijayakumar et al., 2010). In addition, we gave examples of endocrine disrupting chemicals, particularly those that have an oestrogenic²³ or anti-androgenic²⁴ action. Studying the presence of these chemicals in household dust in different parts of the world was an important aim in this study.

Central to toxicological risk assessment since the late 1950s is the concept of TDI, or equivalent concepts such as ADI (Acceptable Daily Intake) and RfD (Reference Dose). The concept was first used systematically by the Council of

Europe, and later by the UN Joint Expert Committee on Food Additives (JECFA), the US Food and Drug Administration (FDA), the US Environmental Protection Agency (US EPA), the European Food Safety Authority (EFSA), as well as several other authorities around the world (Vettorazzi, 1987; Galli et al., 2008). Tolerable daily intake (TDI) indicates the quantity of a chemical, usually in mg/kg body weight and day, which a human is deemed capable of taking in through food every day throughout their life without it acquiring any adverse health effects. Unfortunately there are no official TDI values for a large number of important chemical compounds, including brominated flame retardants which are commonly occurring environmental pollutants globally (see, for example, de Wit, 2003; de Wit et al., 2006; de Wit et al., 2010). In 2005 an FAO/WHO expert committee concluded that the information on brominated flame retardants is too scanty to derive TDI values (Fromme et al., 2009). This is remarkable, especially for a group of chemicals with such well documented harmful effects as flame retardants. The Swedish Society for Nature Conservation is, in general, very sceptical about how TDI values are set (see discussion below), but in the absence of other reference values, they have been used in our assessment of the aggregate exposure to phthalates.

Our calculations show that the exposure to individual chemicals through dust is in all cases below the respective TDI values (see the tables in Annex II and VI), although the DEHP content in the dust sample from the Philippines, and DBP in the Czech Republic, is equivalent to a daily intake with a risk index of more than 0.8 of the tolerable intake. However, the reality is far more complicated as there is simultaneous exposure to tens of thousands of different chemicals that can potentially interact in exercising toxic effects. Consequently, the traditional way of deriving and interpreting TDI may lead to substantial underestimation of the risk. Based on available knowledge, the Swedish Society for Nature Conservation, therefore, wishes to propose a modified risk assessment method, exemplified here with endocrine disruptors as below.

Most of the evidence suggests that chemicals with the

²³ Oestrogen is a sex hormone with a feminising action

²⁴ Anti-androgenic means that the effect of the male sex hormone testosterone is counteracted

same mode of action in a mixture act according to the concentration addition model, where each chemical contributes to the toxicity of the mixture in proportion to its share in the mixture (Borget et al., 2004; Brian et al., 2005; Matthiessen and Johnson, 2007). There are, thus, simple methods for estimating combination effects of chemicals. It should be possible to apply a concept similar to the concentration addition model to TDI, as described in the methods section above. We exemplify this with the chemical group of phthalates. The phthalates we have chosen to collate -BBP, DBP, DEHP and DINP -all have well documented anti-androgenic effects (Boberg et al., 2011; Gray et al., 2000; Mylchreest et al., 1999). This means that they disrupt sex hormone regulated functions in men or male animals. Examples of such effects are hypospadias (a deformity in which the urethra is on the underside of the penis) and cryptorchidism (where the testis has not migrated down into the scrotum from the abdominal cavity or the inguinal canal). Based on common modes of action, we have made a concentration addition calculation for the phthalates mentioned. Each phthalate contributes to the total daily exposure (the measure of cumulative TDI) in proportion to its share of the TDI of the substance, exemplified by the Philippine and Czech samples in Table 4. The total phthalate exposure of a 7-month-old baby weighing 7 kg then exceeds 100 %²⁵ of the TDI (in the Philippines (110.95 %, see Table 4 a), and in the Czech Republic (109.8 %, see Table 4 b). We can thus show with this methodology, which is also described in the scientific literature (Koch et al., 2011), that the level of exposure exceeds what is considered to be risk-free in a couple of the studied countries. This clearly shows not just the need for improved risk assessment methodology, but also that the presence of endocrine disruptors, especially phthalates, must be reduced. Denmark is a pioneering country in this respect. Its Minister of the Environment, Karen Ellemann, wants to prohibit the importing and production of articles containing the endocrine disrupting phthalates BBP, DBP, DEHP and DIBP, with reference to their combination effects. The Government is pursuing the

requirement nationally in Denmark and through the EU's chemicals agency ECHA at EU level (see http://www.mim.dk/eng/News/Minister_plans_to_introduce_a_ban_against_four_dangerous_phthalates.htm). If the ban is implemented, it would be the first time in history that chemicals have been banned because of their combination effects.

In a corresponding manner it should be possible to group brominated flame retardants and their breakdown products according to oestrogenic (see for example Legler et al., 2003; Stoker et al., 2005; Lilienthal et al., 2006; Liu et al., 2011) and thyroid hormone-disrupting (see for example Legler et al., 2003; Kuriyama et al., 2007; Tseng et al., 2008; Messer, 2010) mechanisms in risk assessments. However, there are no TDI values for different PBDEs at present. It should also be possible to group bisphenols in risk assessments. Bisphenol A, F and S (with certain derivatives²⁶), for example, are oestrogenic and anti-androgenic (see for example Satosh et al., 2004; Kuruto-Niwa et al., 2005). The aim in the longer term, should be to conduct a cumulative risk assessment for as many chemical substances and modes of action as possible.

There are also other problems with endocrine disruptors than cocktail effects. In our study, we have made a conservative assessment based on officially established TDI values. However, the standardised experimental animal tests that normally underlie TDI values are not designed to evaluate effects of endocrine disruptors. These methods are usually short-term experiments with high levels of exposure. Hormones are, however, active at very low concentrations (of the order of pg/l or ng/l²⁷), and may have cumulative and delayed effects that are revealed in later stages of life (Liney et al., 2005; Matthiessen and Johnson, 2007). The relationship between dose and effect is also difficult to predict for endocrine disruptors (Ge et al., 2007). High priority, therefore, needs to be given to develop methods that are capable with high sensitivity to identify disruption in the various endocrine systems. It is worth pointing out

²⁵ If this value exceeds 100 %, the tolerable daily intake of the chemicals in the mixture has been exceeded and there is an evident risk to health

²⁶ A chemical derivative is a chemical that can be created from another one (parent substance) by new chemical groups being added to the latter. This can take place artificially, when new chemicals are created in the manufacturing process, or naturally when chemicals are broken down in nature.
²⁷ 1 pg = 1/1 000 000 000 000 gram ; 1 ng = 1/1 000 000 000 gram

that animal experiments have on many occasions not been found to be relevant for predicting effects on humans²⁸. It is also highly desirable to improve the cell-based methods for toxicity tests on endocrine disruptors. This is also under way in, for example, the large project “Toxicity for the 21st century” (Shukla et al., 2010; Bhattacharya et al., 2011). As well as the ethical aspect (large-scale and generation-wide animal experiments can be avoided), such methods make it possible to test a far larger number of chemicals and in a significantly shorter time, with the ambition to provide more relevant results than animal experiments with respect to human toxicity. Cell cultures may, however, have a poorer ability to metabolise chemicals (Coecke et al., 2006). The substance is sometimes not an endocrine disruptor in itself, but one of its breakdown products is, which means that cell cultures may fail to detect endocrine disrupting effects. In addition, a cell culture cannot represent the complexity of the communication that takes place between different parts of an endocrine system (O’Connor and Chapin, 2003). As certain receptors in endocrine systems can bind many different types of chemicals, it is also difficult to create functioning computer-based models for endocrine systems. The ambition with the new test methods is, however, to overcome this.

We can use the chemical BPA as an example of the problems mentioned above. It is known that dose-response curves for BPA do not follow linear relations (see for example Vadenberg et al., 2006; Wadia et al., 2007). It is, consequently, not possible based on observations of exposure to a particular dose to predict what happens at lower doses, which has long been regarded as a fundamental principle of toxicology. The EFSA and the US EPA have set the TDI for BPA at 0.05 mg/kg and day, which is a very high value in view of the fact that several studies have shown endocrine disrupting effects of BPA exposure in the order of ng/kg and day (see for example FAO/WHO, 2010; Carbaton et al., 2011; Loganathan and Kannan, 2011). The daily exposure level for the dust sample from the Philippines corresponds to the concentrations that have been found to produce effects in

animal experiments (see Loganathan and Kannan, 2011). Even though the daily BPA intake from dust ingestion is estimated to be less than 1% of the total BPA intake (Loganathan and Kannan, 2011), the exposure is of the same magnitude as that which affects experiments animals.

Dust ingestion, as mentioned, is only one of the many exposure routes for a chemical. All exposure routes add together to give the total daily intake of a particular chemical. We know for phthalates that dust ingestion in certain age groups, and for certain phthalates (for example DEHP and BBP), can account for a relatively large share of the daily intake, while other exposure routes (feed intake, inhalation, skin uptake etc.) are more important for other phthalates, and can also vary between age groups (Wormuth et al., 2006). Young children probably take in at least as much phthalates from other sources, which adds to the total exposure.

As mentioned earlier, our calculation shows that the aggregate exposure to the phthalates DEHP, BBP, DBP and DINP from dust exceeds 100% of summed cumulative TDI at a couple of sampling sites. That is, there is a substantial risk. If account is additionally taken of all exposure routes for the studied chemicals, and of the fact that they may have combination effects across the groups of chemicals (for example phthalates with flame retardants), the picture of risk is further strengthened.

Some dust samples had a significantly higher concentration of metals or metal compounds than others. The samples from Tanzania and Kenya had high levels of lead. One may speculate on the reason for this. In many countries in the South there are no restrictions on the level of lead in paints, which has caused SAICM²⁹ to make “Lead in Paint” a priority policy area (so called “emerging policy issue”). The dust sample from Tanzania comes from a room with painted walls. Calculations of daily intake of lead from these dust samples showed, however, that the TDI is not exceeded. It is interesting that the level of methyl mercury

²⁸ Small differences in kinetics (that is to say, uptake of chemicals in the body, distribution, conversion, excretion), hormone systems etc., can lead to different results in different species.

²⁹ SAICM stands for Strategic Approach to International Chemicals Management, and is global policy work under the auspices of the UN. It is intended to ensure that all production and use of chemicals by 2020 takes place in such a way that harm to the environment and health is minimised. See www.saicm.org.

The Swedish Society for

was highest in the Swedish dust sample. The dust sample was collected in an apartment in Hammarby Sjöstad (a residential area in Stockholm), where extensive construction work that is currently in progress, churning up dust from soil layers. The land is an old lake bed in which methyl mercury may have been formed (this happens in oxygen-poor bottom sediment) from mercury dispersed by the many small-scale industrial enterprises that operated in the area, before the land was remediated and prepared for housing. It is difficult to discuss any risks in areas of housing on old industrial land based on a single sample, but this type of location in an urban environment is now highly attractive to house-builders, despite high remediation costs. There may, possibly, be a somewhat elevated risk of exposure to chemicals from contaminated land for residents of such areas in conjunction with construction work. Our finding, combined with the lack of knowledge that prevails on the environmental and health effects and combination effects of many chemicals, means that the development of old industrial land for house-building instead of other land use where people are exposed to a lesser extent, can be questioned.

The Swedish Society for Nature Conservation fully supports the demands of the Danish Government to ban BBP, DBP, DEMP and DIBP in articles on the EU market, both in articles produced in the EU, and in imported goods. We urge the Swedish Government to lend its full support to Denmark on the issue, and to introduce the ban in Sweden as soon as possible.

The Swedish Society for Nature Conservation proposes the following in order to improve risk assessment for endocrine disrupting chemicals in the EU (and for chemicals in general)³⁰:

- Methodology must be established in REACH³¹ and other chemicals legislation in the EU for the evaluation of endocrine disrupting chemicals and what levels of uncertainty are acceptable in the evaluations. In the absence of standardised tests for effects of endocrine disrupting chemicals, it is of the greatest importance that account is taken of all available knowledge. Greater emphasis must be put here on independent university research. Particular consideration needs to be given to effects of low-dose exposures, when published data on such exposures is available. With knowledge about the nature of the endocrine systems, it is particularly important to apply the precautionary principle to endocrine disrupting chemicals, which under uncertainty means worst-case classification rather than approval of substances.
- If there are data showing or suggesting that chemicals have the same mode of action (which in the case of endocrine disruptors should be interpreted as meaning that they may disrupt the same endocrine function), the concentration addition model is to be applied. If there is no such information, an extra safety factor should instead be applied for possible combination effects. This provides a better margin of safety in the risk assessments, in

³⁰ See further reasoning and demands in the Swedish Society for Nature Conservation's policy on environmental toxins.

³¹ REACH stands for Registration, Evaluation, Authorisation and Restriction of Chemicals and has been the EU's chemicals regulation since 2007.

Nature Conservation's recommendations and demands

accordance with the precautionary principle that should always guide toxicological risk assessment.

- Evaluations of chemicals according to REACH take place in three stages: registration, assessment and authorisation. In the registration stage, toxicity data from cell culture tests may be considered sufficient, but it must be borne in mind that cell cultures *may* fail to reveal effects of endocrine disrupting metabolites from tested chemicals³². More extensive tests should be required at the assessment stage. Unfortunately in the present situation these are animal tests, and generation tests may become necessary to identify effects of endocrine disruptor chemicals. It should be remembered, however, that the animal tests are not validated with respect to their ability to predict toxicity in humans. We urge the OECD to continue to attach the greatest priority to develop standardised tests for effects of endocrine disruption, and to find alternatives to animal tests. The commitment to modern and more relevant testing methods (such as TOX 21) needs to be prioritised and strengthened. This is essential so that knowledge about the large number of chemicals that are in circulation in society and combination effects of these chemicals can be acquired in a reasonable time.
- Presently, all chemicals produced or imported to the EU in quantities in excess of one tonne have to be registered under REACH. As endocrine disrupting chemicals are active at very low concentrations, the 1-tonne limit in REACH today is far too high and needs to be adjusted downwards for these and other groups of chemicals.

In the current situation, there is no requirement for environmental monitoring for the chemicals that pass review under REACH. As there is no methodology at present for evaluating endocrine disruptors, there is a risk of such chemicals being approved under REACH. The Swedish Society for Nature Conservation is of the opinion that all chemicals approved under REACH should also be

subject to environmental monitoring, to confirm that they do not pose unacceptable risks. The costs of monitoring should be borne by the companies that register chemicals in proportion to volumes of the chemicals in production or use, according to the polluter-pays principle. Research on the development of biological markers (often at cell level) should be intensified, so that they can be used as early diagnostic instruments in environmental monitoring to detect effects of the chemicals before they are manifested at individual and population level.

In the report “Save the Men” by the Swedish Society for Nature Conservation, which was presented in the spring of 2011, we account for our political demands in greater detail.

³² Metabolite is a scientific term for a breakdown product.

Facts boxes

After contact with partner organisations of the Swedish Society for Nature Conservation, it has emerged that bans and restrictions on the following chemicals are still generally lacking in large parts of the Global South. The exception is feeding bottles for babies, where bans (or proposed bans) on bisphenol A are now in place in certain parts of the world. All the participating European countries are Member States of the EU, and are consequently covered to a very great extent by common chemicals legislation.

Bisphenol A (BPA)

BPA is, principally, used for the production of polycarbonate plastic and for epoxy glues. Polycarbonate plastics are widespread and are used in society, for example, in water bottles, sports equipment, CDs and DVDs and spectacle lenses.

Known environmental and health problems:

BPA has hormone-like properties, which may cause foetal damage in exposure during the foetal stage, have adverse effects on reproduction, and affect the immune system, and it is also suspected that BPA is carcinogenic. Based on laboratory experiments and observations of various organisms in the environment, BPA is considered capable of leading to feminisation of males. BPA is classified as harmful to aquatic organisms, and can cause long-term harmful effects in the environment.

Restrictions and limit values:

The EU and Canada have banned BPA in feeding bottles. Such a ban comes into force in Malaysia in March 2012, and there is also a proposal for a ban in South Africa. The European Food Safety Agency (EFSA) has set the tolerable daily intake (TDI) of BPA at 50 µg/kg body weight/day. However, this limit is subject to considerable discussion, as far lower levels of exposure have been found to affect experimental animals. During the winter of 2010/2011 the Swedish Chemicals Agency and the Swedish National Food Administration conducted a joint investigation of BPA, focusing in particular on the exposure of children.

Polybrominated diphenyl ethers (PBDEs)

Polybrominated diphenyl ethers are used as flame retardants in electronic products, furniture, vehicles, plastic articles and textiles.

Known environmental and health problems:

PBDEs are a group of around 70 different compounds, and belong to the group of brominated flame retardants. The different variants have been named after the number of bromine atoms contained in the compound. Tri-BDE, thus, has three bromine atoms, while tetra-BDE has four (and so on). PBDEs are, in varying degrees, fat-soluble and persistent, and some of them are readily taken up by organisms and dispersed in the food webs of ecosystems, where they remain for a long time. With the exception of some of the compounds, such as penta-PDE, octa-BDE and deca-BDE, there still great gaps in our knowledge of environmental and health effects. It is known, however, that many PBDEs are very toxic to aquatic organisms, and can cause harmful long-term effects in the environment. Some damage the nervous system, and octa-BDE is classified as toxic to reproduction.

Restrictions:

PBDEs are prohibited for use in electrical and electronic products under the RoHS Directive. In the EU, penta- and octa-BDEs above a particular concentration are additionally prohibited in chemical products. The Stockholm Convention, a global agreement aimed at eliminating the most hazardous and most persistent organic environmental toxicants, has placed many PBDEs on its phase-out list. This applies to tetra-BDE, penta-BDE, hexa-BDE, hepta-BDE and octa-BDE. All the countries in our study, apart from Italy and Malaysia, have ratified the Stockholm Convention. However, it is up to the individual countries to implement the Convention, and this not yet been done, for example, in Uganda.

Phthalates

Phthalates are a group of chemicals that are produced in large quantities, and occur in a large number of everyday articles. Small/light phthalates (of low molecular weight) are found in cosmetics, while larger/heavier phthalates (of higher molecular weight) are used as plasticisers in plastics. It is, principally, the large phthalates that are associated with adverse health effects. These include dibutyl phthalate (DBP), diethylhexyl phthalate (DEHP), benzylbutyl phthalate (BBP), diisobutyl phthalate (DIBP), diisodecyl phthalate (DIDP), diisononyl phthalate (DINP) and di-n-octyl phthalate (DNOP).

Known environmental and health properties:

DBP, DEHP, BBP, DIBP, DIDP, DINP and DNOP are endocrine disruptors (to varying degrees) and can adversely affect foetal development and reproduction. Certain phthalates also have environmentally hazardous properties. DBP and BBP, for example, are bioaccumulative and very toxic to aquatic organisms.

Restrictions and limit values:

Four phthalates (DEHP, DBP, BBP and DIBP) are included in the candidate list for REACH, which means that they have been identified as substances of very high concern. Their inclusion in the candidate list means that the seller of an article that contains more than 0.1% of any of these phthalates has an obligation, on request, to inform his customers of this fact. Since the spring of 2011, BBP, DBP and DEHP have been included in Annex XIV to REACH, which means that within a few years special permission will be required to use them.

Special rules limit how phthalates may be used in toys. DEHP, DBP and BBP must not be present at levels above 0.1 % in any toys or child-care articles, while DIDP, DINP and DNOP are prohibited above 0.1 % in toys or child-care articles *that can be put in the mouth*. DEHP is one of the prioritised substances in the Water Framework Directive, and is, thus, to be phased out.

The European Food Safety Agency (EFSA) has set the tolerable daily intake (TDI) for several phthalates: DEHP 50 µg/kg body weight/day, DBP 10 µg/kg body weight/day, BBP 500 µg/kg body weight/day and DINP 150 µg/kg body weight/day.

Denmark has been working since the spring of 2011 on prohibition in the EU of the phthalates DEHP, DBP, BBP and DIBP, with reference to their combination effects, in certain products.

References

- Abb, M., Heinrich, T., Sorkau, E., Lorenz, W., 2009. Phthalates in dust. *Environment International* 35, 965-970.
- Ahmed, O., M., El-Gareib, A.W., El-Bakry, A.M., Abd El-Tawab, S.M., Ahmed, R.G., 2008. Thyroid hormones states and brain development interactions. *International Journal of Developmental Neuroscience* 26, 147-209.
- Al Bitar, 2004. Hazardous chemicals in Belgian house dust. Greenpeace Belgium, Brussels.
- Ali, N., Harrad, S., Goosey, E., Neels, H., Covaci, A., 2011. Novel brominated flame retardants in Belgian and UK indoor dust: implications for human exposure. *Chemosphere* 83, 1360-1365.
- Andersen, H.R., Andersson, A.M., Arnold, S.F., Autrup, H., Barfoed, M., Beresford, N.A., Bjerregaard, P., Christiansen, L.B., Gissel, B., Hummel, R., Jorgensen, E.B., Korsgaard, B., Le Guevel, R., Leffers, H., McLachlan, J., Moller, A., Nielsen, J.B., Olea, N., Oles-Karasko, A., Pakdel, F., Pedersen, K.L., Perez, P., Skakkeboek, N.E., Sonnenschein, C., Soto, A.M., Sumpter, J.P., Thorpe, S.M., Grandjean, P., 1999. Comparison of short-term estrogenicity tests for identification of hormone-disrupting chemicals. *Environmental Health Perspectives* 107, 89-108.
- Bhattacharya, S., Zhang, Q., Carmichael, P., Boekelheide, K., Andersen, M., 2011. Toxicity Testing in the 21st Century: Defining New Risk Assessment Approaches Based on Perturbation of Intracellular Toxicity Pathways. *PLoS ONE* 6(6): e20887. doi:10.1371/journal.pone.0020887.
- Berg, C., Torgrip, R., Emenius, G., Östman, C., 2011. Organophosphate and phthalate esters in air and settled dust – a multi location indoor study. *Indoor Air* 21, 67-76.
- Bjorklund, J.A., Thuresson, K., De Wit, C.A., 2009. Perfluoroalkyl compounds (PCFs) in indoor dust: concentrations, human exposure estimates and sources. *Environmental Science and Technology* 43, 2276-2281.
- Borget, C.J., Quill, T.F., McCarty, L.S., Mason, A.M., 2004. Can mode of action predict mixture toxicity for risk assessment? *Toxicology and Applied Pharmacology* 201, 85-96.
- Boberg, J., Christiansen, S., Axelstad, M., Kledal, T.S., Vinggaard, A.M., Dalgaard, M., Nellemann, C., Hass, U., 2011. Reproductive and behavioral effects of diisononyl phthalate (DINP) in perinatally exposed rats. *Reproductive Toxicology* 31, 200-209.
- Bornehag, C.-G., Lundgren, B., Weschler, C.J., Sigsgaard, T., Hagered-Engman, L., Sundell, J., 2005. Phthalates in indoor dust and their association with building characteristics. *Environmental Health Perspectives* 113, 1399-1403.
- Breous, E., Wenzel, A., Loos, U., 2005. The promoter of the human sodium/iodide symporter responds to certain phthalate plasticisers. *Molecular and Cellular Endocrinology* 244, 75-78.
- Brian, J.V., Harris, C.A., Scholze, M., Backhaus, T., Booy, P., Lamoree, M., Pojana, G., Jonkers, N., Runnafalls, T., Bonfa, A., Marconini, A., Sumpter, J.P., 2005. Accurate prediction of the response of fresh water fish to a mixture of estrogenic chemicals. *Environmental Health Perspectives* 113, 721-728.
- Brown, S.K., Sim, M.R., Abramson, M.J., Gray, C.N., 1994. Concentrations of volatile organic compounds in indoor air – a review, *Indoor Air* 4, 123-134.
- Cabaton, N.J., Wadia, P.R., Rubin, B.S., Zalko, D., Schaeberle, C.M., Askenase, M.H., Gadbois, J.L., Tharp, A.P., Whitt, G., Sonnenschein, C., Soto, A.M., 2011. Perinatal exposure to environmentally relevant levels of bisphenol A decreases fertility and fecundity in CD-1 mice. *Environmental Health Perspectives* 119, 547-552.
- Coecke, S., Ahr, H., Blaauboer, B.J., Bremer, S., Casati, S., Castell, J., Combes, R., Corvi, R., Crespi, C.L., Cunningham, M.L., Elaut, G., Eletti, B., Freidig, A., Gennari, A., Ghersi-Egea, J.-F., Guillouzo, A., Hartung, T., Hoet, P., Ingelman-Sundberg, M., Munn, S., Janssens, W., Ladstetter, B., Leahy, D., Long, A., Meneguz, A., Monshouwer, M., Morath, M., Nagelkerke, F., Pelkonen, O., Ponti, J., Prieto, P., Richert, L., Sabbioni, E., Schaack, B., Steiling, W., Testai, E., Vericat, J.-A., Worth, A., 2006. Metabolism: a bottleneck in in vitro toxicological test development. The report and recommendations of ECVAM workshop 54. *Altern. Lab. Anim.* 34, 49-84, 1.
- D'Hollander, W., Roosens, L., Covaci, A., Cornelis, C., Reynders, H., Van Campenhout, K., de Voogt, P., Bervoets, L., 2010. Brominated flame retardants and perfluorinated compounds in indoor dust from homes and offices in Flanders, Belgium. *Chemosphere* 81, 478-487.
- De Winter-Sorkina, R., Bakker, M.I., van Donkersgoed, G., van Klaveren, J.D., 2003. Dietary intake of heavy metals (cadmium, lead and mercury) by the Dutch population. RIVM report 320103001/2003, 49 pp.
- De Wit, C.A., 2002. An overview of brominated flame retardants in the environment. *Chemosphere* 46, 583-624.
- De Wit, C.A., Aalee, M., Muir, D.C.G., 2006. Levels and trends of brominated retardants in the Arctic. *Chemosphere* 64, 209-233.
- de Wit, C.A., Herzke, D., Vorkamp, K., 2010. Brominated flame retardants in the Arctic environment – trends and new candidates. *Science of the Total Environment* 48, 2885-2918.
- European Commission, 2001. White paper on strategy for a future chemicals policy, COM(2001) 88.
- FAO/WHO, 2010. Joint FAO/WHO Expert meeting to review toxicological and health aspects of bisphenol A (www.who.int/foodsafety/chem/chemicals/BPA_Summary2010.pdf).
- Fromme, H., Körner, W., Nabil Shahin, Wanner, A., Albrecht, M., Boehmer, S., Pralar, H., Mayer, R., Liebl, B., Bolte, G., 2009. Human exposure to polybrominated ethers (PBDE) as evidenced by data from a duplicate diet study, indoor air, house dust, and biomonitoring in Germany. *Environment International* 35, 1125-1135.
- Gray, L.E. Jr, Ostby, J., Furr, J., Price, M., Veeramachaneni, D.N., Parks, L., 2000. Perinatal exposure to the phthalates DEHP, BBP, and DINP, but not DEP, DMP, or DOTP, alters sexual differentiation of the male rat. *Toxicological Science*, 350-65.
- Ge, R.S., Chen, G.R., Dong, Q., Akingbemi, B., Scottas, C.M., Santos, M., Sealon, S.C., Bernard, D.J., Hardy, M.P., 2007. Biphasic effects of postnatal exposure to diethylhexylphthalate on the timing of puberty in male rats. *Journal of Andrology* 28, 513-20.
- Geens, T., Roosens, L., Neels, H., Covaci, A., 2009. Assessment of human exposure to Bisphenol-A, Trichlosan and Tetrabromobisphenol-A through indoor dust intake in Belgium, *Chemosphere* 76, 755-760.
- Harrad, S., Hazrati, S., 2006. Concentrations of polychlorinated biphenyls in indoor air and dust in Birmingham, United Kingdom: implications for human exposure. *Environmental Science & Technology* 40, 4633-4638.
- Harrad, S., Ibarra, C., Robson, M., Melymuk, L., Zhang, X., Diamond, M., Douwes, J., 2009. Polychlorinated biphenyls in domestic dust from Canada, New Zealand, United Kingdom and United States: Implications for human exposure. *Chemosphere* 76, 232-238.
- Harris, C.A., Henttu, P., Parker, M.G., Sumpter, J.P., 1997. The estrogenic

- activity of phthalate esters in vitro. *Environmental Health Perspectives* 105, 802–811.
- Jacobsen, P.R., Christiansen, S., Boberg, J., Nellemann, C., Hass, U., 2010. Combined exposure to endocrine disrupting pesticides impairs parturition, causes pup mortality and affects sexual differentiation in rats. *International Journal of Andrology* 33, 434–342.
- Jobling, S., Reynolds, T., White, R., Parker, M.G., Sumpter, J.P., 1995. A variety of environmentally persistent chemicals, including some phthalate plasticizers, are weakly estrogenic. *Environmental Health Perspectives* 103, 582.
- Johnson-Restrepo, B., Kannan, K., 2009. An assessment of sources and pathways of human exposure to polybrominated diphenyl ethers in the United States. *Chemosphere* 76, 542–548.
- Kang, Y., Wang, H.S., Cheung, W.C., Wong, M.H., 2011. Polybrominated diphenyl ethers (PBDEs) in indoor dust and human hair. *Atmospheric Environment* 45, 2386–2393.
- Kato, K., Calafat, A.M., Needham, L.L., 2009. Polyfluoroalkyl chemicals in house dust. *Environmental Research* 109, 518–523.
- Koch, H.M., Wittassek, M., Brüning, T., Angerer, J., Heudorf, U., 2011. Exposure to phthalates in 5–6 years old primary school starters in Germany – a human biomonitoring study and a cumulative risk assessment. *International Journal of Hygiene and Environmental Health*, 214, 188–195.
- Kuriyama, S.N., Wanner, A., Fidalgo-Neto, A.A., Talsness, C.E., Koerner, W., Chahoud, U., 2007. Developmental exposure to low dose PBDE-99: Tissue distribution and thyroid hormone levels. *Toxicology* 242, 80–90.
- Legler, J., Brouwer, A., 2003. Are brominated flame retardants endocrine disruptors? *Environment International* 29, 879–885.
- Lilienthal, H., Hack, A., Roth-Härer, A., Wichert Grande, S., Talsness, C.E., 2006. Effects of Developmental Exposure to 2,2', 4,4', 5-pentabromodiphenyl ether (PBDE-99) on sex steroids, sexual development, and sexually dimorphic behavior in rats. *Environmental Health Perspectives* 114, 194–200.
- Liney, K.E., Jobling, S., Shears, J.A., Simpson, P., Tyler, C.R., 2005. Assessing the sensitivity of different life stages for the sexual disruption in roach (*Rutilus rutilus*) exposed to effluents from wastewater treatment works. *Environmental Health Perspectives* 113, 1299–1307.
- Liu, H., Hu, W., Sun, H., Shen, O., Wang, X., Lam, M.H.W., Giesy, J.P., Zhang, X., Yu, H., 2011. In vitro profiling of endocrine disrupting potency of 2,2', 4,4'-tetrabromodiphenyl ether (BDE-47) and related hydroxylated analogs (HO-PDEs). *Marine Pollution Bulletin* 63, 28.
- Loganathan, S.N., Kannan, K., 2011. Occurrence of bisphenol A in indoor dust from two locations in the eastern United States and implications for human exposure. *Archives of Environmental Contamination and Toxicology* 61, 68–73.
- Lorber, M., 2008. Exposure of Americans to polybrominated diphenyl ethers. *Journal of Exposure Science and Environmental Epidemiology* 18, 2–19.
- Matthiessen, P., Johnson, I., 2007. Implications of research on endocrine disruption for environmental risk assessment, regulation and monitoring in the European Union. *Environmental Pollution* 146, 9–18.
- Messer, A., 2010. Mini-review: Polybrominated diphenyl ether (PBE) flame retardants as potential autism risk factors. *Physiology and behavior* 100, 245–249.
- Moriwaki, H.Y., Takathah, Y., Arakawa, R., 2003. Concentrations of perfluorooctane sulfonate (PFOS) and perfluorooctanoic acid (PFOA) in vacuum cleaner dust collected in Japanese homes. *Journal of Environmental Monitoring* 5, 753–757.
- Mølhav, L., Clausen, G., Berglund, B., De Ceaurriz, J., Kettrup, A., Lindvall, T., Maroni, A., Pickering, A.C., Risse, Y., Rothweiler, H., Seifert, B., Younes, M., 1997. Total volatile organic compounds (TVOC) in indoor air quality investigations. *Indoor Air* 7, 225–240.6, 597–603.
- Møller, N., Vendelbo, M.H., Kampmann, U., Christensen, B., Madsen, M., Norrelund, H., Jørgensen, J.O., 2009. Growth hormone and protein metabolism. *Clinical Nutrition* 28, 597–603.
- Mylchreest, E., Sar, M., Cattley, R.C., Foster, P.M., 1999. Disruption of androgen-regulated male reproductive development by di(n-butyl) phthalate during late gestation in rats is different from flutamide. *Toxicological Applied Pharmacology* 156, 81–95.
- Nagorka, R., Conrad, A., Scheller, C., Süßenbach, B., Moriske, H.-J., Diisononyl 1,2-cyclohexanedicarboxylic acid (DINCH) and Di(2-ethylhexyl) terephthalate (DEHT) in indoor dust samples: Concentration and analytical problems. *International Journal of Hygiene and Environmental Health* 214, 26–35.
- Naturskyddsforeningen, 2011. Rädna mannen – miljögifter påverkar fertilitet och utveckling.
- Nielsen, E., Ostergaard, G., Thorup, I., Ladefoged, Ole, Jelnes, O. and Jelnes, J.E., 2000. Toxicological evaluation and limit values for Nonylphenol, Nonylphenoethoxylates, tricresyl, phosphates and benzoic acid. The Institute of food Safety and Toxicology, Danish Veterinary and Food Administration. Danish Environmental Protection Agency. Environmental Project No. 512, 2000.
- Nunez, J., Celi, F.S., Ngand, L., Forrest, D., 2008. Multigenic control of thyroid hormone functions in the nervous system. *Molecular and Cellular Endocrinology*, 287, 1–12.
- O'Connor, J.C., Chapin, R.E., 2003. Critical evaluation of observed adverse effects of endocrine active substances on reproduction and development, the immune system, and the nervous system. In; Miyamoto, J., Burger, J. (Eds.), *Implication of Endocrine Active Substances for Human and Wildlife*, Pure and Applied Chemistry, 75, pp. 2099–2123.
- Oomen, A.G., Janssen, P.J.C.M., Dusseldorp, A., Noorlander, C.W., 2008. Exposure to chemicals via house dust. Centre for Substances and Integrated Risk Assessment, 89 pp.
- Plankett, L.M., Turnbull, D., Rodricks, J.V. Differences between adults and children affecting exposure assessment. In: Guzelan, P., Henry, C., Ollin, S. (eds.). *Similarities and differences between children and adults: implications for risk assessment*. ILSI Press 1992, Washington DC., pp. 79–94.
- Paustenbach, D.J., Finley, B.L., Long, T.F., 1997. The critical role of house dust in understanding the hazards posed by contaminated soils. *International Journal of Toxicology* 16, 339–362.
- Rider, C.V., Furr, J.R., Wilson, V.S., Gray, L.E., Jr., 2010. Cumulative effects of in utero administration of mixtures of reproductive toxicants that disrupt common target tissues via diverse mechanisms of toxicity. *International Journal of Andrology* 33, 443–462.
- Roberts, J.W., Wallace, L.A., Camann, D.E., Dickey, P., Gillbert, S.G., Lewis, R.G., Takaro, T.K., 2009. Monitoring and reducing exposure of infants to

- pollutants in house dust. *Review of Environmental Contamination and Toxicology* 201, 1-39.
- Ryoko, K.-N., Ryushi, N., Takashi, M., Tatsushi, S., Yoshiyasu, T., 200. Estrogenic activity of alkylphenols, bispheno S and their chlorinated derivatives using a GFP expression system. *Environmental Toxicology and Pharmacology* 19, 121-130.
- Rudel, R., Camann, D., Spengler, J., Korn, L., Brody, J., 2003. Phthalates, alkylphenols, pesticides, polybrominated diphenyl ethers and other endocrine disrupting compounds in indoor air and dust. *Environmental Science and Technology* 37, 4543-4553.
- Santillo, D., Labunska, I., Davidsson, H., Johnston, P., Strutt, M., Knowles, O., 2003. Consuming chemicals – hazardous chemicals in house dust as an indicator of chemical exposure in the home #2, Greenpeace, 104 pp.
- Satoh, K., Ohyama, K., Aokia, N., Lidab, M., Nagaia, F., 2004. Study on anti-androgenic effects of bisphenol A diglycidyl ether (BADGE), bisphenol F diglycidyl ether (BFDGE) and their derivatives using cells stably transfected with human androgen receptor, AR-Eco Screen. *Food and Chemical Toxicology* 42, 983-993.
- Shukla, S.J., Huang, R., Austin, C.P., Xia, M., 2010. The future of toxicity testing: a focus on in vitro methods using a quantitative high throughput screening platform. *Drug Discovery Today* 15, 997-1007.
- Smith, K., 1988. Air pollution: assessing total exposure in the United States. *Environment* 30, 10-38.
- Stoker, T.E., Cooper, R.L., Lambright, C.S., Wilson, V.S., Furr, J., Gray, L.E., 2005. In vivo and in vitro anti-androgenic effects of DE-71, a commercial polybrominated diphenyl ether (PBDE) mixture. *Toxicology and Applied Pharmacology* 207, 78-88.
- Takigami, H., Suzuki, G., Hirai, Y., Sakai, S.-I., 2009. Brominated flame retardants and other polyhalogenated compounds in indoor air and dust from two houses in Japan. *Chemosphere* 76, 270-277.
- Tan, J., Cheng, S.M., Loganath, A., Chong, Y.S., Obbard, J. P., 2007. Polybrominated diphenyl ethers in house dust in Singapore. *Environmental International* 37, 592-596.
- Tan, J., Cheng, S.M., Loganath, A., Chong, Y.S., Obbard, J. P., 2007. Selected organochlorine pesticide and polychlorinated biphenyl residues in house dust in Singapore. *Chemosphere* 68, 1675-1682.
- Teseng, L.-H., Li, M.-H., Tsai, S.-S., Lee, C.-W., Pan, M.-H., Yao, W.-J., Hsu, P.-C., 2008. Developmental exposure to decabromodiphenyl ether (PBDE 209): Effects on thyroid hormone and hepatic enzyme activity in male mouse offspring. *Chemosphere* 70, 640-647.
- Quirós- Alcalá, L., Bradman, A., Nishioka, M., Harnly, M.E., Hubbard, A., McKone, T.E., Eskenazi, B., 2011. Concentrations and loadings of polybrominated diphenyl ethers in dust from low-income households in California. *Environment International* 37, 592-596.
- Vandenberg, L.N., Wadia, P.R., Schaeberle, C.M., Rubin, B.S., Sonnenschein, C., Sotho, A.M., 2006. The mammary gland, response to estradiol: monotonic at the cellular level, non-monotonic at the tissue-level of organization? *Journal of Steroid Biochemistry and Molecular Biology* 101, 263-274.
- Vettorazzi, G., 1987. Advances in the safety evaluation of food additives. A conceptual and historical overview of the acceptable daily intake (ADI) and acceptable daily intake "not specified". *Food Additives Contamination* 4, 331-356.
- Vorhees, D.J. Polychlorinated biphenyls. In: Spengler, J.D., Samet, J.M., McCarthy, J.F. (eds.), *Indoor Air Quality Handbook*. McGraw-Hill, New York 2001, pp. 36.1-36.24.
- Vijayakumar, A., Novosyadlyy, R., Wu, Y.J., Yakar, S., LeRoith, D., 2010. Biological effects of growth hormone on carbohydrate and lipid metabolism. *Growth hormone and IGF Research* 20, 1-7.

Annex

Annex I

A compilation is provided here of published median concentrations in household dust of the chemicals studied by the Swedish Society for Nature Conservation.

Table: Chemical, concentration (ng/g), country and reference.

Chemical	Median concentration (ng/g)	Country	References
Brominated diphenyl ethers			
PBDE 100	0.54 ²⁷	Japan	Takigami et al., 2009
	84.90 (n=23)	China	Kang et al., 2011
PBDE 119	No information	No information	No information
PBDE 126	No information	No information	No information
PBDE 138	No information	No information	No information
PBDE 153	6.90 (n=31)	Singapore	Tan et al., 2007
	2.01	Japan	Takigami et al., 2009
PBDE 154	3.50	Singapore	Tan et al., 2007
	0.99	Japan	Takigami et al., 2009
PBDE 156	22.50	China	Kang et al., 2011
PBDE 17	9.20	China	Kang et al., 2011
PBDE 183	18.00	Singapore	Tan et al., 2007
	44.00	Canada	
	30.7	United States	
PBDE 184	75.40	China	Kang et al., 2011
PBDE 191	2.78	China	Kang et al., 2011
PBDE196	2.30 (n=45)	Belgium	D'Hollander et al., 2010
PBDE 197	1.40 (N=39)	Belgium	Ali et al., 2011
	15.00	China	Kang et al., 2011
PBDE 206	50.50	China	Kang et al., 2011
PBDE 207	47.30	China	Kang et al., 2011
PBDE 209	425.00	Spain	Santillo et al., 2003
	420.00	France	Santillo et al., 2003
	7100	United Kingdom	Santillo et al., 2003
	1000	Singapore	Tan et al., 2007
	390	Japan	Takigami et al., 2009
	1401.00	China	Kang et al., 2011
PBDE 28	0.28	France	Santillo et al., 2003
	0.35	United Kingdom	Santillo et al., 2003
	0.60	Singapore	Tan et al., 2007
	37.60	China	Kang et al., 2011

²⁷ Mean value of samples from two buildings.

Chemical	Median concentration (ng/g)	Country	References
PBDE 47	13.00	Spain	Santillo et al., 2003
	24.00	France	Santillo et al., 2003
	24.80	United Kingdom	Santillo et al., 2003
	20.00	Singapore	Tan et al., 2007
	102.00 ²⁸	China	Kang et al., 2011
PBDE 49	10.10	China	Kang et al., 2011
PBDE 66	8.67	China	Kang et al., 2011
PBDE 71	31.90 ²⁹	China	Kang et al., 2011
PBDE 77	No information	No information	No information
PBDE 85	30.60	China	Kang et al., 2011
PBDE 99	17.50	Spain	Santillo et al., 2003
	28.50	France	Santillo et al., 2003
	44.00	United Kingdom	Santillo et al., 2003
	4.20	Singapore	Tan et al., 2007
	5.40	China	Kang et al., 2011
Polychlorinated diphenyl ethers			
PCB 28	0.20 (n=31)	Singapore	Tan et al., 2007
	7.30 (n=10)	Canada	Harrad et al., 2009
	3.40 (n=20)	United Kingdom	Harrad et al., 2009
PCB 52	7.20 (n=10)	Canada	Harrad et al., 2009
	1.80 (n=20)	United Kingdom	Harrad et al., 2009
PCB101	0.50	Singapore	Tan et al., 2007
	8.80	Canada	Harrad et al., 2009
	1.20	United Kingdom	Harrad et al., 2009
PCB 118	0.30	Singapore	Tan et al., 2007
	8.70	Canada	Harrad et al., 2009
	0.41	United Kingdom	Harrad et al., 2009
PCB 138	9.50	Canada	Harrad et al., 2009
	0.92	United Kingdom	Harrad et al., 2009
PCB 153	200 (n=119)	USA	Rudel et al. (2003)
PCB 180	0.10	Singapore	Tan et al., 2007
	6.80	Canada	Harrad et al., 2009
	0.89	United Kingdom	Harrad et al., 2009

34 Mean value of samples from two buildings

35 Mean value of samples from two buildings

Chemical	Median concentration (ng/g)	Country	References
Ftalater			
BBP	82 200 ³⁰	Germany	Santillo et al., 2003
	4540 ³¹	Spain	Santillo et al., 2003
	28 200 ³²	France	Santillo et al., 2003
	23 600 ³³	Italy	Santillo et al., 2003
	24 500 ³⁴	United Kingdom	Santillo et al., 2003
	97 560 ³⁵ b (n=51)	Belgium	Al Bitar, 2004
	135 000 ³⁶ (n=390)	Sweden	Bornehag et al., 2005
	15 200 ³⁷	Germany	Abb et al., 2009
DIBP	36 500 ⁹	Germany	Santillo et al., 2003
	148 999 ¹⁰	Spain	Santillo et al., 2003
	118 800 ¹¹	France	Santillo et al., 2003
	180 100 ¹²	Italy	Santillo et al., 2003
	43 200 ¹³	United Kingdom	Santillo et al., 2003
	56 820 ¹⁴	Belgium	Al Bitar, 2004
	45 000 ⁸	Sweden	Bornehag et al., 2005
Di-isobutyladipat	No information	No information	No information
DNOP	No information	No information	No information
DBP	44 100 ⁹	Germany	Santillo et al., 2003
	79 400 ¹⁰	Spain	Santillo et al., 2003
	55 300 ¹¹	France	Santillo et al., 2003
	42 800 ¹²	Italy	Santillo et al., 2003
	52 800 ¹³	United Kingdom	Santillo et al., 2003
	97 560 ¹⁴	Belgium	Al Bitar, 2004
	150 000 ⁸	Sweden	Bornehag et al., 2005
	87 400 ¹⁵	Germany	Abb et al., 2009
Dibutyladipat	No information	No information	No information
DEHP	996 000 ⁹	Germany	Santillo et al., 2003
	317 200 ¹⁰	Spain	Santillo et al., 2003
	504 600 ¹¹	France	Santillo et al., 2003
	434 300 ¹²	Italy	Santillo et al., 2003
	195 400 ¹³	United Kingdom	Santillo et al., 2003
	244 990 ¹⁴	Belgium	Al Bitar, 2004

36 Median of 5 samples

37 Median of 22 samples

38 Median of 58 samples

39 Median of 5 samples

40 Median of 100 samples

41 Median of 51 samples

42 Median of 436 households

43 Median of 30 samples

Chemical	Median concentration (ng/g)	Country	References
	770 000 ⁹	Sweden	Bornehag et al., 2005
	604 000 ¹⁵	Germany	Abb et al., 2009
Diethyladipat	No information	No information	No information
DEHA	No information	No information	No information
DEP	12 900 ⁹	Germany	Santillo et al., 2003
	5330 ¹⁰	Spain	Santillo et al., 2003
	6870 ¹¹	France	Santillo et al., 2003
	6780 ¹²	Italy	Santillo et al., 2003
	3500 ¹³	United Kingdom	Santillo et al., 2003
	3770 ¹⁴	Belgium	Al Bitar, 2004
DIDP	61 150 ¹⁴	Belgium	Al Bitar, 2004
	33 600 ¹⁵	Germany	Abb et al., 2009
DIHP	No information	No information	No information
DINP	113 000 ⁹	Germany	Santillo et al., 2003
	115 300 ¹¹	France	Santillo et al., 2003
	102 910 ¹⁴	Belgium	Al Bitar, 2004
	41 000 ⁸	Sweden	Bornehag et al., 2005
	129 000 ¹⁵	Germany	Abb et al., 2009
DMP	1420 ⁹	Germany	Santillo et al., 2003
	610 ¹⁴	Belgium	Al Bitar, 2004
DINCH	120 00000 ³⁸	Germany	Nagorka et al., 2011
TBP	No information	No information	No information
Alkylphenols			
Nonylphenol	2580 (n=118)	USA	Rudel et al., 2003
Nonylphenolmonoethoxylater	3360 (n=118)	USA	Rudel et al., 2003
Nonylphenoldiethoxylate	5330 (n=118)	USA	Rudel et al., 2003
Octylphenol	130 (n=118)	USA	Rudel et al., 2003
Bisphenols			
Bisfenol A	2001 ³⁹	Belgium	Geens et al., 2009
Perfluorinated compounds			
PFBS	359.00 (n=39)	Australia, United Kingdom, Germany and USA	Kato et al., 2009
PFDA	No information	No information	No information

44 Mean value of 36 households

45 Mean value of 18 samples

Chemical	Median concentration (ng/g)	Country	References
PFHpA	97.3 (n=39)	Australia, United Kingdom, Germany and USA	Kato et al., 2009
PFDS	No information	No information	No information
PFDoA	No information	No information	No information
PFHxS	210.00	United Kingdom	D'Hollander et al., 2010
	180.00	Australia	Goosey et al., 2010
	120.00	Canada	Goosey et al., 2010
	77.00	France	Goosey et al., 2010
	150.00	Germany	Goosey et al., 2010
	120.00	Kazakhstan	Goosey et al., 2010
	16.00	Thailand	Goosey et al., 2010
	240.00	United States	Goosey et al., 2010
	0.1	Belgium	D'Hollander et al., 2010
PFHxA	0.3	Belgium	D'Hollander et al., 2010
PFNA	0.1	Belgium	D'Hollander et al., 2010
PFOS	25.00 (n=16)	Japan	Moriwaki et al., 2003.
	49.00 (n=48)	Sweden	Bjorklund et al., 2009
	140.00 (n=45)	United Kingdom	Goosey et al., 2010
	170.00 (n=20)	Australia	Goosey et al., 2010
	140.00 (n=19)	Canada	Goosey et al., 2010
	160.00 (n=10)	France	Goosey et al., 2010
	170.00 (n=10)	Germany	Goosey et al., 2010
	59.00 (n=9)	Kazakhstan	Goosey et al., 2010
	16.00 (n=20)	Thailand	Goosey et al., 2010
	310.00 (n=10)	USA	Goosey et al., 2010
PFOSA	No information	No information	No information
PFOA	165.00	Japan	Moriwaki et al., 2003.
	55.00	Sweden	Bjorklund et al., 2009
	190.00	United Kingdom	Goosey et al., 2010
	180.00	Australia	Goosey et al., 2010
	69.00	Canada	Goosey et al., 2010
	31.00	France	Goosey et al., 2010
	300.00	Germany	Goosey et al., 2010
	18.00	Thailand	Goosey et al., 2010
	240.00	USA	Goosey et al., 2010

Chemical	Median concentration (ng/g)	Country	References
Pesticides			
Vinclozolin	No information	No information	No information
Prochloraz	No information	No information	No information
Metoxychlor	240 (n=119)	USA	Rudel et al., 2003
Parabens			
Butylparaben	76	Spain	Canosa et al., 2007
Propylparaben	406	Spain	Canosa et al., 2007
Metals and metal compounds			
Lead	573 000.00 ⁴⁰	New Zealand	Kim & Fergusson, 1993
	232 000.00 ⁴¹	Canada	Rasmussen et al., 2001
	85 200.00 ⁴²	Australia	Chattopadhyay et al., 2005
Cadmium	4240.00 ⁴⁰	New Zealand	Kim & Fergusson, 1993
	4400.0041	Canada	Rasmussen et al., 2001
	1900.00	Australia	Chattopadhyay et al., 2005
Mercury	5000.0041	Canada	Rasmussen et al., 2001
Methyl mercury	No information	No information	No information

46 Mean value of 120 samples

47 Mean value of 48 samples

48 Mean value of 82 samples

Annex II

A compilation is presented here of official TDI values for the chemicals analysed by the Swedish Society for Nature Conservation.

Table: Tolerable daily intake (mg/day/kg body weight) for the analysed substances and references.

Chemical	TDI (mg/day/kg body weight)	Reference
Brominated diphenyl ethers		
PBDE 17	No information	
PBDE 28	No information	
PBDE 47	No information	
PBDE 49	No information	
PBDE 66	No information	
PBDE 71	No information	
PBDE 77	No information	
PBDE 85	No information	
PBDE 99	No information	
PBDE 100	No information	
PBDE 119	No information	
PBDE 126	No information	
PBDE 138	No information	
PBDE 153	No information	
PBDE 154	No information	
PBDE 156	No information	
PBDE 183	No information	
PBDE 184	No information	
PBDE 191	No information	
PBDE196	No information	
PBDE 197	No information	
PBDE 206	No information	
PBDE 207	No information	
PBDE 209	No information	
Polychlorinated diphenyl ethers		
PCB 28	0.00002	EFSA
PCB 52	0.00002	EFSA
PCB101	0.00002	EFSA
PCB 118	0.00002	EFSA
PCB 153	0.00002	EFSA
PCB 138	0.00002	EFSA
PCB 180	0.00002	EFSA

Chemical	TDI (mg/day/kg body weight)	Reference
Phthalates		
BBP	0.5	EFSA
DEHA	0.3	EFSA
DEHP	0.05	EFSA
Di-isobutyladipat	No information	
DIDP	0.15	EFSA
DIHP	Ingen information	
DINP	0.15	EFSA
DOP	0.037	CSTE ⁴³
Dibutyladipat	No information	
DNOP	No information	
DBP	0.01	EFSA
Diethyladipat	No information	
DEP	0.037	SCTEE ⁴⁴
DMP	Ingen information	
DINCH	1	EFSA
TBP	Ingen information	
Alkylphenols		
Nonylphenol	0.005	Nielsen et al., 2000
Nonylphenolmonoethoxylater	No information	
Nonylphenoldiethoxylate	No information	
Octylphenol	No information	
Bisphenols		
Bisfenol A	0.05	EFSA
Perfluorinated substances		
PFBS	No information	
PFDA	No information	
PFHpA	No information	
PFDS	No information	
PFDoA	No information	
PFHxS	No information	
PFHxA	No information	
PFNA	No information	
PFOS	No information	
PFOSA	0.00015	EFSA
PFOA	0.015	EFSA

49 Council of State and Territorial Epidemiologists

50 Scientific Committee on Toxicology Ecotoxicology and Environment

Chemical	TDI (mg/day/kg body weight)	Reference
Pesticides		
Vinclozolin	0.01	WHO
Prochloraz	0.01	WHO
Metoxychlor	0.1	WHO
Parabens		
Butylparaben	No information	
Propylparaben	10 mg ⁴⁵	EFSA
Metals and metal compounds		
Lead	0.0036	De Winter-Sorkina et al.. 2003
Cadmium	0.0005	De Winter-Sorkina et al.. 2003
Mercury	0.002	De Winter-Sorkina et al.. 2003
Methyl mercury	0.0001	De Winter-Sorkina et al.. 2003

⁵¹ Temporary group TDI for the sum of methyl-, ethyl-, propylparaben and their salts set by the predecessor of the EFSA. Obsolete.

Annex III

A description is given here of the sampling sites and their surroundings.

Table 1: Sampling country, city/town, other information

Sampling country	City/town	Other information
South Africa	Durban	<p>Second-floor apartment in the suburb of Merebank. There are no children in the household.</p> <p>Indoor environment: Floor covering of quarry tiles, painted walls, wooden furniture.</p> <p>Outdoor environment: several industrial enterprises close to the residential area, including two oil refineries and chemical production.</p>
Tanzania	Dar-es-Salaam	<p>Room occupied by two people in rented apartment in the suburb of Kinondoni.</p> <p>Indoor environment: Plastic floor, painted walls, wooden furniture and textiles.</p> <p>Outdoor environment: A major road outside, close to several arable fields.</p>
Kenya	Nairobi	<p>The dust sample consists of three sub-samples.</p> <p>The first sub-sample came from a four-person apartment, from a room occupied by one person. The apartment is on the ground floor.</p> <p>Outdoor environment: Large residential area, close to railway line and there is a major motorway a short distance away.</p> <p>The second sub-sample came from a room occupied by two people, in a six-person household, in a third-floor apartment.</p> <p>Outdoor environment: Around 15 km from the centre of Nairobi, in an area where agriculture is undertaken.</p> <p>The third sub-sample was taken in a room occupied by two people, in a four-person household, on the first floor.</p> <p>Outdoor environment: The building is located around 20 km from the centre of Nairobi, close to a garage, a shopping centre and a church.</p>
Uganda	Kampala	<p>Room occupied by two people in a nine-person household in the suburb of Najjanankumbi.</p> <p>Indoor environment: Stone floor, painted walls, rug, wooden furniture, textiles, hygiene products and books.</p> <p>Outdoor environment: Close to minor road in area of individual houses.</p>
Malaysia	George Town	<p>Room occupied by one person on the fifth floor on the outskirts of Georgetown City. There is both a child and a dog in the household.</p> <p>Indoor environment: Floor covering of quarry tile, wooden furniture, textiles, mosquito nets and hygiene products.</p> <p>Outdoor environment: Rented flat next to busy road, directly opposite a school, and close to a car workshop.</p>

Philippines	Manila	<p>Room occupied by three people, six-person apartment on the 3rd floor, in the district of Malabon City.</p> <p>Indoor environment: Both wall and floor covering of plastic, wooden furniture, textiles, electrical appliances, toys, computer, TV and hygiene products. No ventilation.</p> <p>Outdoor environment: densely populated suburb of rental apartment blocks, directly opposite basketball court and at a terminal for three-wheel moped taxis.</p>
Sweden	Stockholm	<p>Apartment with young family, on the 2nd floor in central Stockholm (Hammarby Sjöstad), built in 2006.</p> <p>Indoor environment: Parquet flooring, painted plasterboard and concrete walls, textiles and computer.</p> <p>Outdoor environment: Proximity to Värmdöleden road, excavation work in old lake sediment right outside, in a larger area of apartments and a few parks.</p>
Germany	Frankfurt	<p>Apartment occupied by a couple, on the 2nd floor.</p> <p>Indoor environment: Wooden floor, wooden and cane furniture, textiles, books and stereo, textiles. The bedroom has a balcony.</p> <p>Outdoor environment: Proximity to church and hospital in an area of apartments.</p>
Belgium	Brussels	<p>Room on the second floor in a terraced house occupied by a young couple in central Brussels (Ixelles).</p> <p>Indoor environment: Wooden floor, painted walls, wooden furniture and textiles.</p> <p>Outdoor environment: The house is located next to a road, neighbouring a day nursery and school. The area is dominated by terraced houses and apartments.</p>
Czech Republic	Pilsen	<p>Apartment occupied by two people, on the 3rd floor in the town.</p> <p>Indoor environment: Painted walls, textiles, plastic mat, toys and hygiene products.</p> <p>Outdoor environment: Area of rental apartment blocks in industrial town, engineering and metallurgy facility. Factory producing railways locomotives, turbines for power plants, tramways etc.</p>
Hungary	Budapest	<p>Room with two people in apartment occupied by four people, on the 2nd floor, in the suburb of Törökbálint.</p> <p>Indoor environment: Floor covering of plastic, wallpaper and wooden furniture.</p> <p>Outdoor environment: Large motorway approx. 1 km from the building, sparsely populated affluent suburb.</p>
Italy	Rom	<p>Apartment occupied by an adult, on the first floor</p> <p>Indoor environment: Floor covering of quarry tiles, furniture of melamine and polyurethane foam, bookshelves, textiles, TV and stereo. Bedroom with balcony.</p> <p>Outdoor environment: On square directly opposite a railway station, car park and with a car workshop beneath the apartment.</p>

Annex IV

Pictures from the sampling sites are provided here.



Bund, Germany



Bund, Germany



CAP, Malaysia



NAPE, Uganda



Envirocare, Tanzania



SSL, Czech Republic



iLima, Kenya



Levego, Hungary



Levego, Hungary



Amica, Italy



Amica, Italy



Heal/EPHA, Belgium



Heal/EPHA, Belgium



groundWork, South Africa



groundWork, South Africa



EcoWaste, Philippines



EcoWaste, Philippines



Swedish Society for Nature Conservation, Sweden

Annex V

The concentrations of the analysed chemicals varied in the different samples. The results for the analysed groups of chemicals are presented below in running text and as a table of measured values.

Flame retardants

One of the groups of chemicals that deviates from other studies is brominated diphenyl ethers (flame retardants), and the greatest differences are in dust samples from the Global South, particularly in the sample from the Philippines, but also in the sample from Uganda (see the table below).

The mean concentration of the studied flame retardants in the dust samples from the six countries from the South was 349.4 µg/kg, and 60.2 µg/kg in the dust samples from the six EU Member States.

Summed concentrations of the studied brominated flame retardants were calculated for each sample and are presented in Graph 1A as relative values, normalised against the samples with the lowest cumulative concentrations (the sample from Malaysia). The cumulative concentration of brominated flame retardants in the sample from the Philippines was more than 10 000 times greater than in the sample from Malaysia.

Phthalates

Another of the chemical groups that deviates from other studies is phthalates (plasticisers of plastics, principally PVC), and the greatest deviations are in dust samples from the Global South, particularly in the sample from the Philippines. DINP was remarkably high in the sample from Hungary.

The mean concentration of the studied phthalates in the dust samples from the six countries from the Global South was 684.8 mg/kg, and in the dust samples from the six EU Member States was 934.8 mg/kg.

Summed concentrations of the studied phthalates were calculated for each sample and are presented in Graph 1B as relative values, normalised against the samples with the lowest cumulative concentrations (the sample from Kenya).

Alkylphenols

The sum of the alkylphenol levels was comparable in order of magnitude in most of the dust samples (see the table below). The

dust sample from Belgium had the highest sum; the dust sample from Malaysia the lowest.

Bisphenols

The concentration of bisphenol A was highest in the Philippine dust sample (see the table below). It was more than five times higher than the concentration in the Italian dust sample, and 15-16 times higher than in the samples from Sweden, South Africa and the Czech Republic.

Parabens

Only propylparaben was detected in a dust sample (the sample from South Africa, see the table below) and at low concentration.

Perfluorinated compounds

The summed levels for perfluorinated compounds were generally highest in the countries in the Global South (Philippines, South Africa, Tanzania) (see the table below).

Polychlorinated diphenyl ethers

None of the analysed PCBs could be detected in the dust samples.

Pesticides

None of the analysed pesticides could be detected in the dust samples.

Metals

The lead levels varied, but were high in certain dust samples (Belgium, the Philippines, Italy, Kenya, Tanzania and the Czech Republic) in relation to the other dust samples in this study (see the table below).

Mercury was only found in the dust sample from Tanzania and methylated mercury was found generally at higher levels in the European dust samples than in the dust samples from the South (see the table below). The highest methyl mercury level was found in the Swedish dust sample.

The cadmium levels varied and were highest in Germany (see the table below).

No individual daily exposure value through involuntary ingestion of dust exceeds official TDI values (see tables in Annexes II and VI).

Table: Chemical, concentration in dust samples from South Africa, Tanzania, Kenya, Uganda, the Philippines, Malaysia, Sweden, Germany, Belgium, the Czech Republic, Hungary and Italy. Minus signs (-) designate values that are below a reliable level of quantification or detection. These values have been excluded from calculations of daily exposure

Chemical	Sample, South Africa (µg/kg)	Sample, Tanzania (µg/kg)	Sample, Kenya (µg/kg)	Sample, Uganda (µg/kg)	Sample, Philippines (µg/kg)	Sample, Malaysia (µg/kg)	Sample, Sweden (µg/kg)	Sample, Germany (µg/kg)	Sample, Belgium (µg/kg)	Sample, Czech Republic (µg/kg)	Sample, Hungary (µg/kg)	Sample, Italy (µg/kg)
Brominated diphenyl ethers												
PBDE 17	-	-	-	5.4	3.4	-	-	-	-	0.25	-	-
PBDE 28	-	0.14	0.29	16.9	13.1	-	-	-	-	0.5	-	-
PBDE 47	1.0	2.4	1.3	60.4	2400.0	-	10.9	1.4	5.5	3.4	1.5	3.4
PBDE 49	-	0.1	-	10.8	60.1	-	-	-	-	0.3	-	-
PBDE 66	-	0.1	-	13.3	59.4	-	-	-	-	0.3	-	-
PBDE 71	-	-	-	-	-	-	-	-	-	-	-	-
PBDE 77	-	-	-	1.3	-	-	-	-	-	-	-	-
PBDE 85	-	-	-	1.7	266.0	-	-	-	-	-	-	-
PBDE 99	0.9	2.2	1.2	30.4	4330.0	-	13.6	3.8	9.3	4.1	3.4	2.5
PDE 100	-	0.5	-	2.2	897.0	-	2.2	-	1.8	0.8	-	-
PBDE 119	-	-	-	6.0	0	-	-	-	-	-	-	-
PBDE 126	-	-	-	-	-	-	-	-	-	-	-	-
PBDE 138	-	-	-	-	64.6	-	-	-	-	-	-	-
PBDE 153	1.4	0.4	2.5	10.9	474	-	1.7	-	-	-	-	-
PBDE 154	0	0	0	2.1	369	-	0.9	-	-	-	-	-
PBDE 156	0	0	0	0	0	-	-	-	-	-	-	-
PBDE 183	4.5	0.7	43.4	2.9	17.3	-	-	-	-	-	-	-
PBDE 184	-	-	-	-	-	-	-	-	-	-	-	-
PBDE 191	-	-	-	-	-	-	-	-	-	-	-	-
PBDE196	6.7	-	4.7	3.1	-	-	3.9	-	-	-	-	-
PBDE 197	3.8	-	10.2	-	-	-	-	-	-	-	-	-
PBDE 206	50.4	2.8	-	34.9	31.8	-	-	-	-	-	-	-
PBDE 207	59.6	-	2.5	33.1	-	-	-	-	-	-	-	-
PBDE 209	660.0	29.8	51.4	567	1180.0	-	-	45.1	92.9	80.0	0	67.4
Polybrominated biphenyl ethers⁴⁶												
PCB 28	-	-	-	-	-	-	-	-	-	-	-	-

⁴⁶ The reason why PCBs could not be detected in this study is probably that the sensitivity of the measuring method was too low. Other studies have shown that PCBs are a chemical group often found in dust.

PCB 52	-	-	-	-	-	-	-	-	-	-	-	-	-	-	-	-	-	-	-	-	-	-	-	-	-	-	-	-	-	-	-	-	-	-	-	-	-	-	-															
PCB101	-	-	-	-	-	-	-	-	-	-	-	-	-	-	-	-	-	-	-	-	-	-	-	-	-	-	-	-	-	-	-	-	-	-	-	-	-	-	-	-														
PCB 118	-	-	-	-	-	-	-	-	-	-	-	-	-	-	-	-	-	-	-	-	-	-	-	-	-	-	-	-	-	-	-	-	-	-	-	-	-	-	-	-	-													
PCB 153	-	-	-	-	-	-	-	-	-	-	-	-	-	-	-	-	-	-	-	-	-	-	-	-	-	-	-	-	-	-	-	-	-	-	-	-	-	-	-	-	-													
PCB 138	-	-	-	-	-	-	-	-	-	-	-	-	-	-	-	-	-	-	-	-	-	-	-	-	-	-	-	-	-	-	-	-	-	-	-	-	-	-	-	-	-	-												
PCB 180	-	-	-	-	-	-	-	-	-	-	-	-	-	-	-	-	-	-	-	-	-	-	-	-	-	-	-	-	-	-	-	-	-	-	-	-	-	-	-	-	-	-	-											
Phthalates																																																						
BBP	1000.0	350.0	1600.0	2500.0	27000.0	1400.0	7600.0	7100.0	2000.0	480.0	-	-	-	-	-	-	-	-	-	-	-	-	-	-	-	-	-	-	-	-	-	-	-	-	-	-	-	-	-	-	-	-	-											
DEHA	4100.0	15000.0	-	16000.0	5000.0	3400.00	5800.0	0	3900.0	-	1800.0	3700.0	-	-	-	-	-	-	-	-	-	-	-	-	-	-	-	-	-	-	-	-	-	-	-	-	-	-	-	-	-	-	-											
DEHP	120000.0	289000.0	6500.0	720000.0	1670000.0	65000.0	121000.0	213000.0	146000.0	470000.0	37000.0	203000.0	-	-	-	-	-	-	-	-	-	-	-	-	-	-	-	-	-	-	-	-	-	-	-	-	-	-	-	-	-	-	-	-										
Di-isobutyladipat	-	-	-	-	-	-	11000.0	-	-	-	-	-	-	-	-	-	-	-	-	-	-	-	-	-	-	-	-	-	-	-	-	-	-	-	-	-	-	-	-	-	-	-	-	-	-									
DIDP	10000.0	0	-	-	-	-	60000.0	3900.0	-	-	11000.0	82000.0	-	-	-	-	-	-	-	-	-	-	-	-	-	-	-	-	-	-	-	-	-	-	-	-	-	-	-	-	-	-	-	-	-									
DIHP	-	0	-	-	-	-	-	146000.0	-	-	-	-	-	-	-	-	-	-	-	-	-	-	-	-	-	-	-	-	-	-	-	-	-	-	-	-	-	-	-	-	-	-	-	-	-	-								
DINP	33000.0	21000.0	-	460000.0	550000.0	5600.0	102000.0	-	59000.0	-	879000.0	60000.0	-	-	-	-	-	-	-	-	-	-	-	-	-	-	-	-	-	-	-	-	-	-	-	-	-	-	-	-	-	-	-	-	-	-								
DOP	-	-	-	-	-	-	0.4	2600	-	-	-	-	-	-	-	-	-	-	-	-	-	-	-	-	-	-	-	-	-	-	-	-	-	-	-	-	-	-	-	-	-	-	-	-	-	-	-							
Dibutyladipat	-	-	-	-	-	-	0	-	-	-	-	-	-	-	-	-	-	-	-	-	-	-	-	-	-	-	-	-	-	-	-	-	-	-	-	-	-	-	-	-	-	-	-	-	-	-	-	-						
DBP	8000.0	3700.0	15000.0	3900.0	17000.0	1000.0	9200.0	-	4900.0	290000.0	1900.0	2400.0	-	-	-	-	-	-	-	-	-	-	-	-	-	-	-	-	-	-	-	-	-	-	-	-	-	-	-	-	-	-	-	-	-	-	-	-						
Diethyladipat	-	-	-	-	-	-	-	59000.0	-	-	-	-	-	-	-	-	-	-	-	-	-	-	-	-	-	-	-	-	-	-	-	-	-	-	-	-	-	-	-	-	-	-	-	-	-	-	-	-	-					
DEP	-	-	520.0	650.0	940.0	-	-	-	8400.0	660.0	840.0	320.0	-	-	-	-	-	-	-	-	-	-	-	-	-	-	-	-	-	-	-	-	-	-	-	-	-	-	-	-	-	-	-	-	-	-	-	-						
DMP	-	-	-	-	-	-	-	-	-	-	-	-	-	-	-	-	-	-	-	-	-	-	-	-	-	-	-	-	-	-	-	-	-	-	-	-	-	-	-	-	-	-	-	-	-	-	-	-	-	-				
DINCH	-	-	-	-	-	-	-	4900.0	-	-	-	-	-	-	-	-	-	-	-	-	-	-	-	-	-	-	-	-	-	-	-	-	-	-	-	-	-	-	-	-	-	-	-	-	-	-	-	-	-	-				
TBP	140.0	-	-	-	-	-	-	-	-	-	-	-	-	-	-	-	-	-	-	-	-	-	-	-	-	-	-	-	-	-	-	-	-	-	-	-	-	-	-	-	-	-	-	-	-	-	-	-	-	-				
Alkylphenols																																																						
Nonylphenol	0.1	0.5	2.1	1.0	3.8	0.2	1.0	0.8	1.5	1.6	2.1	2.2	-	-	-	-	-	-	-	-	-	-	-	-	-	-	-	-	-	-	-	-	-	-	-	-	-	-	-	-	-	-	-	-	-	-	-	-	-					
Nonylphenolmonoethoxylater	-	0.2	-	0.7	0.5	58.0*10 ⁻³	0.2	1.2	1.1	0.5	-	0.4	-	-	-	-	-	-	-	-	-	-	-	-	-	-	-	-	-	-	-	-	-	-	-	-	-	-	-	-	-	-	-	-	-	-	-	-	-	-				
Nonylphenoldiethoxylate	-	-	-	0.7	0.3	-	-	1.3	2.8	-	-	0.4	-	-	-	-	-	-	-	-	-	-	-	-	-	-	-	-	-	-	-	-	-	-	-	-	-	-	-	-	-	-	-	-	-	-	-	-	-	-	-			
Octylphenol	-	-	-	-	-	-	-	-	-	-	-	-	-	-	-	-	-	-	-	-	-	-	-	-	-	-	-	-	-	-	-	-	-	-	-	-	-	-	-	-	-	-	-	-	-	-	-	-	-	-	-			
Bisphenols																																																						
Bisfenol A	1.5	35.7*10 ⁻³	0.6	0.3	24.7	0.1	1.7	0.4	0.4	1.5	0.9	4.6	-	-	-	-	-	-	-	-	-	-	-	-	-	-	-	-	-	-	-	-	-	-	-	-	-	-	-	-	-	-	-	-	-	-	-	-	-	-				
Perfluorinated compounds																																																						
PFBS	-	-	-	-	-	-	-	-	-	-	-	-	-	-	-	-	-	-	-	-	-	-	-	-	-	-	-	-	-	-	-	-	-	-	-	-	-	-	-	-	-	-	-	-	-	-	-	-	-	-	-	-		
PFDA	-	-	-	-	-	-	-	-	-	-	-	-	-	-	-	-	-	-	-	-	-	-	-	-	-	-	-	-	-	-	-	-	-	-	-	-	-	-	-	-	-	-	-	-	-	-	-	-	-	-	-	-	-	
PFHpA	-	-	-	-	-	-	-	-	-	-	-	-	-	-	-	-	-	-	-	-	-	-	-	-	-	-	-	-	-	-	-	-	-	-	-	-	-	-	-	-	-	-	-	-	-	-	-	-	-	-	-	-	-	-
PFDS	-	-	-	-	-	-	-	-	-	-	-	-	-	-	-	-	-	-	-	-	-	-	-	-	-	-	-	-	-	-	-	-	-	-	-	-	-	-	-	-	-	-	-	-	-	-	-	-	-	-	-	-	-	-
PFDaA	-	-	-	-	-	-	-	-	-	-	-	-	-	-	-	-	-	-	-	-	-	-	-	-	-	-	-	-	-	-	-	-	-	-	-	-	-	-	-	-	-	-	-	-	-	-	-	-	-	-	-	-	-	-

Chemical	Sample. South Africa (µg/kg)	Sample. Tanzania (µg/kg)	Sample. Kenya (µg/kg)	Sample. Uganda (µg/kg)	Sample. Philippines (µg/kg)	Sample. Malaysia (µg/kg)	Sample. Sweden (µg/kg)	Sample. Germany (µg/kg)	Sample. Belgium (µg/kg)	Sample. Czech Republic (µg/kg)	Sample. Hungary (µg/kg)	Sample. Italy (µg/kg)
PFHxS	-	-	-	-	-	-	-	-	-	-	-	-
PFHxA	-	-	-	-	-	-	-	-	-	-	-	-
PFNA	-	-	-	-	-	-	-	-	-	-	-	-
PFOS	7.2	1.5	-	0.7	-	7.6	1.6	-	-	-	-	-
PFOSA	-	-	-	-	-	-	-	-	-	-	-	-
PFOA	-	3.4	-	-	1.1	-	-	-	-	-	-	-
Pesticides												
Vinclozolin	-	-	-	-	-	-	-	-	-	-	-	-
Prochloraz	-	-	-	-	-	-	-	-	-	-	-	-
Metoxychlor	-	-	-	-	-	-	-	-	-	-	-	-
Parabener												
Butylparaben	-	-	-	-	-	-	-	-	-	-	-	-
Propylparaben	0.2	-	-	-	-	-	-	-	-	-	-	-
Metals and metal compounds												
Lead	3500.0	170000.0	120000.0	6000.0	29000.0	510.0	780.0	3300.0	11000.0	11000.0	4100.0	20000.0
Cadmium	170.0	390.0	79.0	310.0	500.0	-	-	650.0	170.0	290.0	77.0	90.0
Mercury	-	300.0	-	-	-	-	-	-	-	-	-	-
Methyl mercury	-	1.5	0.3	0	10.0	-	25.0	10.0	1.7	1.9	13.0	12.0

Annex VI

Table A: Chemical and daily exposure ($\mu\text{g}/\text{kg}$ and day) (7-month-old baby weighing 7 kg) in South Africa, Tanzania, Kenya, Uganda, the Philippines, Malaysia, Sweden, Germany, Belgium, the Czech Republic, Hungary and Italy.

Chemical	South Africa, child. daily uptake ($\mu\text{g}/\text{kg}$ * day)	Tanzania, child. daily uptake ($\mu\text{g}/\text{kg}$ * day)	Kenya, child. daily uptake ($\mu\text{g}/\text{kg}$ * day)	Uganda, child. daily uptake ($\mu\text{g}/\text{kg}$ * day)	Philippines, child. daily uptake ($\mu\text{g}/\text{kg}$ * day)	Malaysia, child. daily uptake ($\mu\text{g}/\text{kg}$ * day)	Sweden, child. daily uptake ($\mu\text{g}/\text{kg}$ * day)	Germany, child. daily uptake ($\mu\text{g}/\text{kg}$ * day)	Belgium, child. daily uptake ($\mu\text{g}/\text{kg}$ * day)	Czech Republic, child. daily uptake ($\mu\text{g}/\text{kg}$ * day)	Hungary, child. daily uptake ($\mu\text{g}/\text{kg}$ * day)	Italy, child. daily uptake ($\mu\text{g}/\text{kg}$ * day)
Brominated diphenyl ethers												
PBDE 17	-	$4.0 \cdot 10^{-6}$	$8.3 \cdot 10^{-06}$	$4.8 \cdot 10^{-3}$	$9.7 \cdot 10^{-05}$	-	-	-	-	$7.1 \cdot 10^{-06}$	-	-
PBDE 28	0	$6.9 \cdot 10^{-05}$	$3.8 \cdot 10^{-05}$	$1.7 \cdot 10^{-3}$	$3.7 \cdot 10^{-3}$	-	-	-	-	$1.4 \cdot 10^{-6}$	-	-
PBDE 47	$27.2 \cdot 10^{-6}$	$3.1 \cdot 10^{-6}$	-	$308.6 \cdot 10^{-6}$	$68.6 \cdot 10^{-3}$	-	$311.4 \cdot 10^{-6}$	$3.9 \cdot 10^{-5}$	$158 \cdot 10^{-6}$	$9.7 \cdot 10^{-5}$	$4.2 \cdot 10^{-5}$	$9.7 \cdot 10^{-5}$
PBDE 49	-	$3.1 \cdot 10^{-6}$	-	$380.0 \cdot 10^{-6}$	$1.7 \cdot 10^{-3}$	-	-	-	-	$8.9 \cdot 10^{-6}$	-	-
PBDE 66	-	-	-	-	$1.7 \cdot 10^{-3}$	-	-	-	-	$9.1 \cdot 10^{-6}$	-	-
PBDE 71	-	-	-	$3.7 \cdot 10^{-5}$	-	-	-	-	-	-	-	-
PBDE 77	-	-	-	$4.9 \cdot 10^{-5}$	-	-	-	-	-	-	-	-
PBDE 85	.	$6.3 \cdot 10^{-5}$	$3.4 \cdot 10^{-5}$	$868.6 \cdot 10^{-6}$	$7.6 \cdot 10^{-3}$	-	-	-	-	-	-	-
PBDE 99	$2.6 \cdot 10^{-5}$	$1.4 \cdot 10^{-5}$	-	$62.0 \cdot 10^{-6}$	0.1	-	$388.6 \cdot 10^{-6}$	$108.3 \cdot 10^{-6}$	$265.4 \cdot 10^{-6}$	$116.6 \cdot 10^{-6}$	$9.7 \cdot 10^{-5}$	$7.0 \cdot 10^{-5}$
PDE 100	-	-	-	$170.9 \cdot 10^{-6}$	$25.6 \cdot 10^{-3}$	-	$7.7 \cdot 10^{-5}$	-	$5.1 \cdot 10^{-5}$	$2.3 \cdot 10^{-5}$	-	-
PBDE 119	-	-	-	-	-	-	-	-	-	-	-	-
PBDE 126	-	-	-	-	-	-	-	-	-	-	-	-
PBDE 138	-	$12 \cdot 10^{-6}$	$7.1 \cdot 10^{-5}$	$3.1 \cdot 10^{-3}$	$1.8 \cdot 10^{-3}$	-	-	-	-	-	-	-
PBDE 153	$40.0 \cdot 10^{-6}$	-	-	$5.9 \cdot 10^{-5}$	$13.5 \cdot 10^{-3}$	-	$4.8 \cdot 10E-5$	-	-	-	-	-
PBDE 154	-	-	-	-	$10.5 \cdot 10^{-3}$	-	$2.61 \cdot 10^{-5}$	-	-	-	-	-
PBDE 156	-	$1.9 \cdot 10^{-5}$	$1.2 \cdot 10^{-3}$	$820.0 \cdot 10^{-6}$	-	-	-	-	-	-	-	-
PBDE 183	$129.4 \cdot 10^{-6}$	-	-	-	$494.3 \cdot 10^{-6}$	-	-	-	-	-	-	-
PBDE 184	-	-	-	-	-	-	-	-	-	-	-	-
PBDE 191	-	-	$132.0 \cdot 10^{-6}$	$9.0 \cdot 10^{-5}$	-	-	-	-	-	-	-	-
PBDE 196	$190.9 \cdot 10^{-6}$	-	$292.4 \cdot 10^{-6}$	-	-	-	$112.0 \cdot 10^{-6}$	-	-	-	-	-
PBDE 197	$108.9 \cdot 10^{-6}$	$8.1 \cdot 10^{-5}$	-	$997.1 \cdot 10^{-6}$	-	-	-	-	-	-	-	-
PBDE 206	$1.4 \cdot 10^{-3}$	$7.2 \cdot 10^{-5}$	-	$945.7 \cdot 10^{-6}$	$908.6 \cdot 10^{-6}$	-	-	-	-	-	-	-

PBDE 207	1.7*10 ⁻³	1.5*10 ⁻³	851.4*10 ⁻³	16.2*10 ⁻³	-	-	-	-	-	-	-	-	-	-	-	-	-	-	-
PBDE 209	18.3*10 ⁻³	1.5*10 ⁻³	851.4*10 ⁻⁶	16.2*10 ⁻³	33.7*10 ⁻³	-	1.3*10 ⁻³	2.7*10 ⁻³	2.3*10 ⁻³	-	-	-	-	-	-	-	-	-	1.9*10 ⁻³
Phthalates																			
BBP	28.7*10 ⁻³	10.0*10 ⁻³	45.7*10 ⁻³	71.4*10 ⁻³	771.4*10 ⁻³	40.0*10 ⁻³	0.2	57.1*10 ⁻³	0.2	13.7*10 ⁻³	51.4*10 ⁻³	-	-	-	-	-	-	-	48.5*10 ⁻³
DEHA	0.1	0.4	-	0.5	0.1	1.0	0.2	0.1	-	-	1.1	-	-	-	-	-	-	-	0.1
DEHP	3.4	8.3	0.2	20.6	47.7	1.9	3.5	4.2	6.1	13.4	-	-	-	-	-	-	-	-	5.8
Di-isobutyladipat	-	-	-	-	-	-	0.3	-	-	-	-	-	-	-	-	-	-	-	-
DIDP	0.3	-	-	-	-	-	1.7	-	0.7	-	-	-	-	-	-	-	-	-	2.3
DIHP	-	-	-	-	-	-	-	-	-	-	-	-	-	-	-	-	-	-	-
DINP	0.9	0.6	-	13.1	15.7	0.2	2.9	1.7	3.5	-	-	-	-	-	-	-	-	-	1.7
DOP	-	-	-	-	-	-	1.1*10 ⁻⁵	-	-	-	-	-	-	-	-	-	-	-	-
Dibutyladipat	-	-	-	-	-	-	-	-	-	-	-	-	-	-	-	-	-	-	-
DBP	0.2	0.1	0.4	0.1	0.5	28.6*10 ⁻³	0.3	0.1	1.2	8.29	-	-	-	-	-	-	-	-	68.6*10 ⁻³
Diethyladipat	-	-	-	-	-	-	-	-	-	-	-	-	-	-	-	-	-	-	-
DEP	-	-	14.0*10 ⁻³	18.6*10 ⁻³	26.9*10 ⁻³	-	-	0.2	94.3*10 ⁻³	18.9*10 ⁻³	-	-	-	-	-	-	-	-	9.1*10 ⁻³
TBP	4.0*10 ⁻³	-	-	-	-	-	-	-	-	-	-	-	-	-	-	-	-	-	-
Alkylphenols																			
Iso-nonylnol	2.9*10 ⁻⁵	1.3*10 ⁻⁵	60.0*10 ⁻⁶	2.8*10 ⁻⁵	108.6*10 ⁻⁶	4.3*10 ⁻⁶	28.0*10 ⁻⁶	22.0*10 ⁻⁶	4.3*10 ⁻⁰⁵	22*10 ⁻⁶	4.6*10 ⁻⁵	-	-	-	-	-	-	-	6.3*10 ⁻⁵
Nonylphenolmonoethoxylater	8.3*10 ⁻⁵	5.7*10 ⁻⁶	-	2.0*10 ⁻⁵	1.5*10 ⁻⁵	1.7*10 ⁻⁶	6.8*10 ⁻⁶	3.4*10 ⁻⁵	3.1*10 ⁻⁵	3.4*10 ⁻⁰⁵	1.3*10 ⁻⁵	-	-	-	-	-	-	-	1.2*10 ⁻⁵
Nonylphenoldiethoxylate	3.7*10 ⁻⁵	-	-	2.0*10 ⁻⁵	9.5*10 ⁻⁶	-	-	3.7*10 ⁻⁵	80.0*10 ⁻⁶	3.7*10 ⁻⁵	-	-	-	-	-	-	-	-	10.0*10 ⁻⁶
Bisphenols																			
Bisfenol A	4.3*10 ⁻⁵	10.2*10 ⁻⁶	1.6*10 ⁻⁵	7.7*10 ⁻⁶	705.7*10 ⁻⁶	1.9*10 ⁻⁶	1.1*10 ⁻⁶	1.2*10 ⁻⁵	1.1*10 ⁻⁵	4.3*10 ⁻⁵	25.0*10 ⁻⁶	-	-	-	-	-	-	-	131.7*10 ⁻⁶
Perfluorinated compounds																			
PFOS	205.7*10 ⁻⁶	4.3*10 ⁻⁵	-	20.0*10 ⁻⁶	-	217.1*10 ⁻⁶	4.6*10 ⁻⁰⁵	-	-	-	-	-	-	-	-	-	-	-	-
PFOA	-	9.7*10 ⁻⁵	-	-	3.1*10 ⁻⁵	-	-	-	-	-	-	-	-	-	-	-	-	-	-
Parabens																			
Propylparaben	4.3*10 ⁻⁶	-	-	-	-	-	-	-	-	-	-	-	-	-	-	-	-	-	-
Metals and metal																			
Lead	0.1	4.9	3.4	0.2	0.8	14.6*10 ⁻³	22.2*10 ⁻³	94.2*10 ⁻³	0.3	0.3	0.1	-	-	-	-	-	-	-	0.6
Cadmium	4.9*10 ⁻³	260.0*10 ⁻⁶	2.3*10 ⁻³	8.8*10 ⁻³	14.3*10 ⁻³	-	-	18.6*10 ⁻³	4.8*10 ⁻³	8.3*10 ⁻³	2.2*10 ⁻³	-	-	-	-	-	-	-	2.5*10 ⁻³
Mercury	-	2000.0*10 ⁻⁶	-	-	-	-	-	-	-	-	-	-	-	-	-	-	-	-	-
Methylmercury	-	4.3*10 ⁻⁵	8.6*10 ⁻⁶	-	285.7*10 ⁻⁶	-	714.3*10 ⁻⁶	285.7*10 ⁻⁶	1.1*10 ⁻⁶	5.4*10 ⁻⁵	371.4*10 ⁻⁶	-	-	-	-	-	-	-	80.0*10 ⁻⁶

Annex VII

A compilation is presented here of the sample values that deviate from published data from other studies.

Table: Chemical, previously reported concentration range, and deviating sample values.

Chemical	Previously reported concentration range (µg/kg)	Sample, South Africa (µg/kg)	Sample, Tanzania (µg/kg)	Sample, Kenya (µg/kg)	Sample, Uganda (µg/kg)	Sample, Philippines (µg/kg)	Sample, Malaysia (µg/kg)	Sample, Sweden (µg/kg)	Sample, Germany (µg/kg)	Sample, Belgium (µg/kg)	Sample, Czech Republic (µg/kg)	Sample, Hungary (µg/kg)	Sample, Italy (µg/kg)
Brominated diphenyl ethers													
PBDE 17	9.2												
PBDE 28	37.6												
PBDE 47	13 - 102				2400								
PBDE 49	10.1			10.8	60.1								
PBDE 66	8.7			13.3									
PBDE 71	31.9												
PBDE 77	Ingen info.												
PBDE 85	30.6				266								
PBDE 99	5.40 - 44.0				4330								
PDE 100	0.54 - 84.9				897								
PBDE 119	Ingen info.												
PBDE 126	Ingen info.												
PBDE 138	Ingen info.												
PBDE 153	2.0 - 6.9			10.9	474								
PBDE 154	0.99 - 3.6				369								
PBDE 156	22.5												
PBDE 183	1.40 - 77.0												
PBDE 184	75.4												
PBDE 191	2.8												

PBDE196	2.3	6.68		4.65	3.14		3.92		
PBDE 197	1.40 - 15.0								
PBDE 206	50.5	50.4							
PBDE 207	47.3	59.6							
PBDE 209	390 - 7100								
Phthalates									
BBP	15.2 - 135.0								
DEHA	Ingen info.								
DEHP	195 - 996		1670						
Di-isobutyladipat	Ingen info.								
DIDP	33.6 - 61.2								
DIHP	Ingen info								
DINP	41 - 129		460	550			879		
DOP	Ingen info.								
Dibutyladipat	Ingen info.								
DBP	Ingen info.								
Diethyladipat	Ingen info.								
DEP	3.7 - 12		15		17				
DMP	0.61 - 1.42						8.4		
DINCH	1200								
TBP	Ingen info.								
Alkylphenols									
Nonylphenol	2580 - 7500								
Nonylphenolmonoethoxylater	3360								
Nonylphenoldiethoxylate	5330								
Octylphenol	130								
Bisphenols									
Bisfenol A	7200								
Perfluorinated compounds									
PFOs	Ingen info.								
PFOA	300								
Parabens									
Butylparaben	76								
Propylparaben	406								

Metals and metal compounds												
Lead											85200 - 573000	
Cadmium											1900 - 4400	
Mercury											5000	
Methylmercury											No info.	



Swedish Society for Nature Conservation

Naturskyddsföreningen. Box 4625, SE-116 91 Stockholm.
Phone + 46 8 702 65 00. info@naturskyddsforeningen.se
www.naturskyddsforeningen.se

The Swedish Society for Nature Conservation is an environmental organisation with power to bring about change. We spread knowledge, map environmental threats, create solutions, and influence politicians and public authorities, at both national and international levels. Moreover, we are behind one of the world's most challenging ecolabellings,

“Bra Miljöval”(Good Environmental Choice). Climate, the oceans, forests, environmental toxicants and agriculture are our main areas of involvement.

www.naturskyddsforeningen.se



Bra Miljöval