

# Checking Exposure Scenarios

**Augusto Di Bastiano & Bridget Ginnity**  
Senior Scientific Officers  
Risk Management

23 April, 2012  
11:00 - 13:00 Helsinki Time (GMT +2)

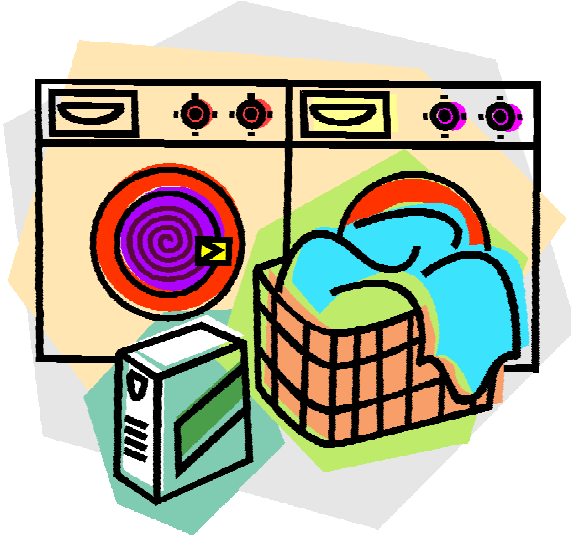
# **Check the Exposure Scenario: Practical examples**



## Exposure Scenario Check - Title Section

- Check every exposure scenario that may be relevant to your activities
- Are all relevant tasks/processes identified? For example, formulation, filling containers, spray painting, maintenance, cleaning
- Are all your uses identified? Industrial, professional and consumer?

# Title Section Example – Formulator of Laundry Detergent for Professionals & Consumers



## ANALYSIS

- Formulation covered
- Professional use covered
- Consumer use not covered

## ACTION

- Check with supplier

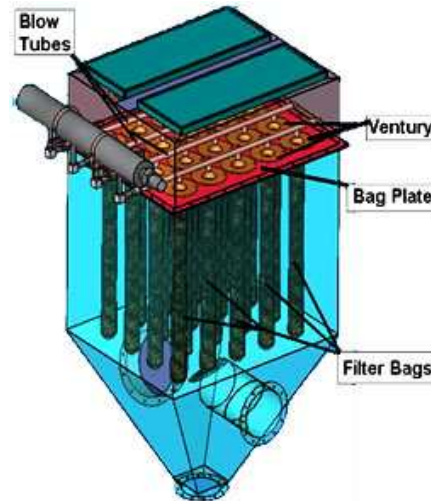
# Exposure Scenario Check - Environmental Section

- Is your amount used within the amount specified in the ES?
- Are the risk management measures in line? Is the effectiveness similar or better?
- If a different technology, does it direct process losses to the same environmental compartment?

# Environmental Example – Powder coating



**Exposure Scenario:**  
Wet Scrubber with 95% effectiveness



**Your Site:**  
Bag Filters with 99% effectiveness

## ANALYSIS

- Technology of Your Risk Management Measure Differs ☒

## ACTION

- Consider if process losses go to other environmental compartments.
- In this case, no other compartment is affected, and waste treatment is more effective, so your use is covered.

Image sources [www. www.forbesgroup.co.uk](http://www.forbesgroup.co.uk) [www.rajdeepengg.com](http://www.rajdeepengg.com)

# Exposure Scenario Check - Worker Exposure Section

- Do product characteristics (such as concentration, form, viscosity) match?
- Do the operational conditions and technical risk management measures match?
- Is personal protective equipment provided as required and are all organisational conditions met?

# Worker Exposure Example – Formulator of Metal Working Fluids



You formulate metal working fluids containing substance A at concentrations between 5% and 25%.

The ES covers formulation up to 100%.

It covers use at concentrations up to 10%. Also, in the worker exposure scenario, gloves are required.

## ANALYSIS

- Formulation covered
- Your customer use is not covered

## ACTION:

- Take action to ensure use above 10% concentration is covered, both for workers and the environment (contact supplier/prepare own CSR/scaling etc.).
- Inform your customers that gloves are required (unless own CSR undertaken).



# Check the Exposure Scenario - Consumer Exposure Section



- Do product characteristics (such as concentration, form, viscosity) match?
- Do the amount used, frequency and duration match?

# Consumer Exposure Example – Cleaning Products



You are a refiller of multipurpose cleaning products for consumers. The ES indicates that some means should be employed to limit the quantity dispensed to less than 10mg/event. At present, you have no way of controlling the quantity

## ANALYSIS

- Formulation covered
- Your customer use is not covered

## ACTION

- Change the design of your container to control the dispensed quantity. You may have the possibility to implement product changes (concentration, form), which would also limit the exposure.